

APPROCHE AUX INSTRUMENTS

PONTOISE CORMEILLES EN VEXIN

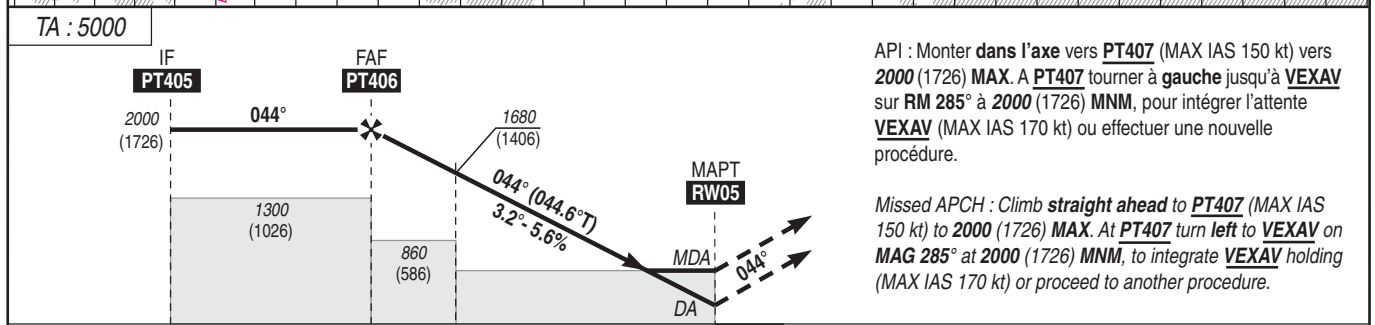
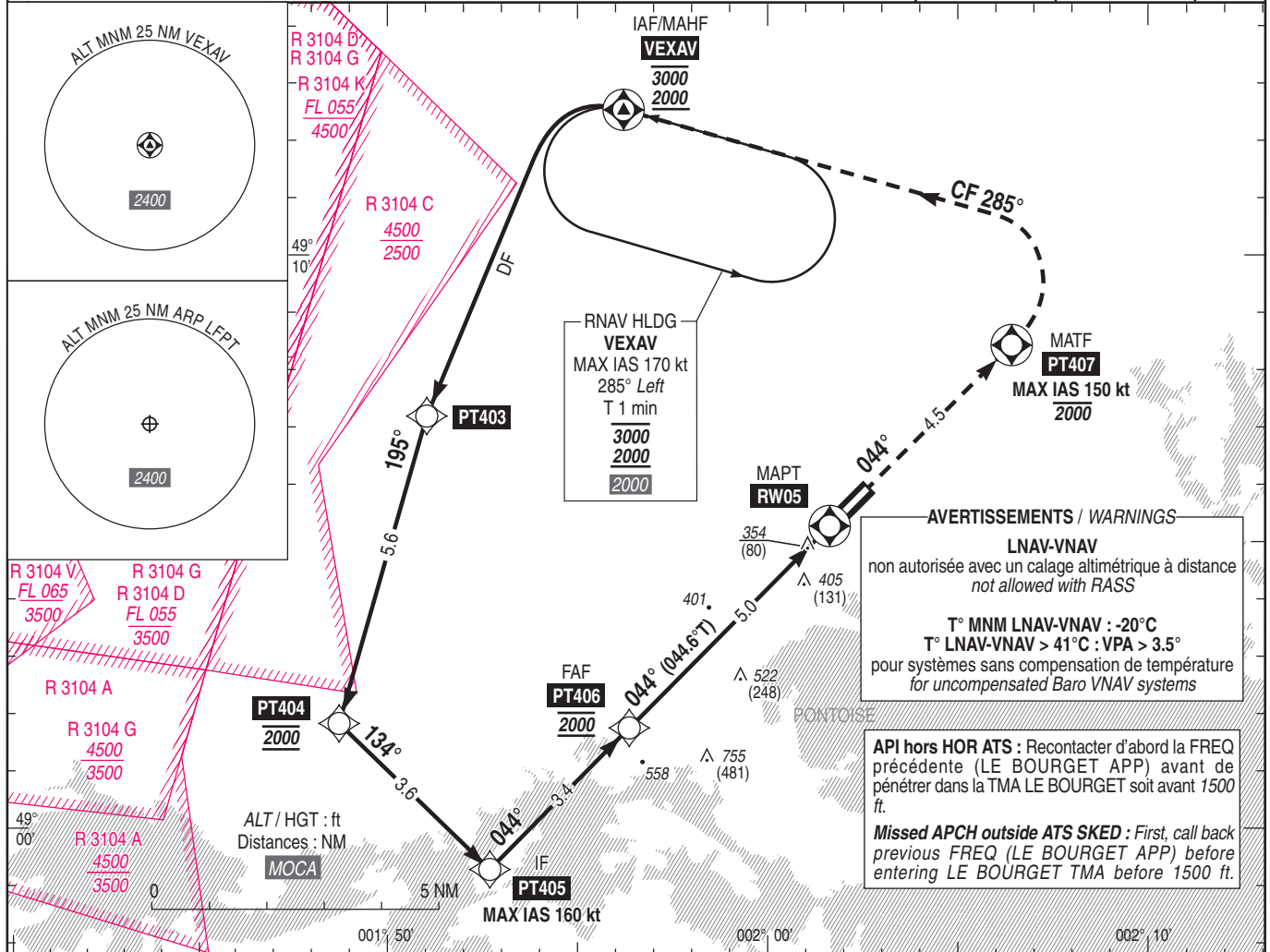
Instrument approach

CAT A B

ALT AD : 325, THR : 274 (10 hPa)

VEXAV RNP X RWY 05

ATIS PONTOISE : 124.125 APP : DE GAULLE Approche / Approach 118.150 - 119.850 - 121.155 - 125.830 - 126.430 - 136.275 - 126.575 (s) LE BOURGET Approche / Approach 118.800 TWR : PONTOISE Tour / Tower 121.200 Absence ATS : A/A FR seulement. Obtenir QNH auprès de ATIS LE BOURGET 120.000 A/A FR only. Obtain QNH with ATIS LE BOURGET 120.000	RNAV 1 et/and RNP APCH	EGNOS Ch 81255 E05D RDH : 43	VAR 1° E (20)
--	------------------------------	---------------------------------------	---------------------



TA : 5000
MNM AD : distances verticales en pieds, RVR et VIS en mètres / vertical distances in feet, RVR and VIS in metres. REF HGT : ALT THR

CAT	LPV			LNAV-VNAV			LNAV			MVL / Circling (1)		MVL/Circling (1) Absence ATS TWR		DIST RW05			
	DA (H)	RVR	OCH	DA (H)	RVR	OCH	MDA (H)	RVR	OCH	MDA (H)	VIS	MDA (H)	VIS	NM	4	3	2
A	480 (200)	750	161	560 (280)	278	290	700 (430)	1500	422	1000 (730)	1500	1100 (830)	1500	1680	1340	1000	
B			171	570 (290)	900	290				1020 (740)	1600	1120 (840)	1600	(HGT)	(1406)	(1066)	(726)

Observations / Remarks : (1) Circuit AD RWY 23 et RWY 30 à droite, RWY 12 et RWY 30 : 1000 (700).
(1) Right hand circuit RWY 23 and RWY 30, RWY 12 and RWY 30 : 1000 (700).
Panne de guidage GNSS lors de l'approche / Loss of GNSS guidance during approach : voir / see AIP ENR 1.5.

FAF - RW05	5 NM	70 kt	85 kt	100 kt	115 kt	130 kt
		4 min 15	3 min 30	2 min 58	2 min 35	2 min 17
VSP (ft/min)		395	480	565	650	735