

APPROCHE AUX INSTRUMENTS

PONTOISE CORMEILLES EN VEXIN

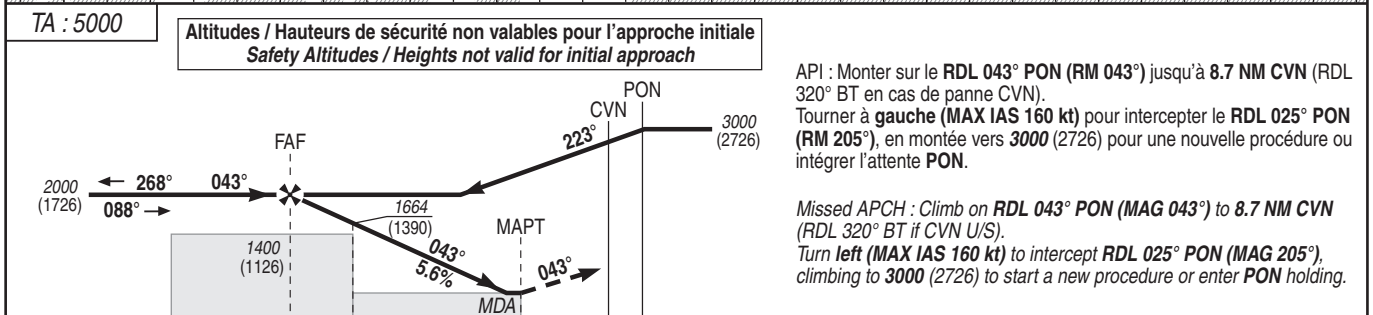
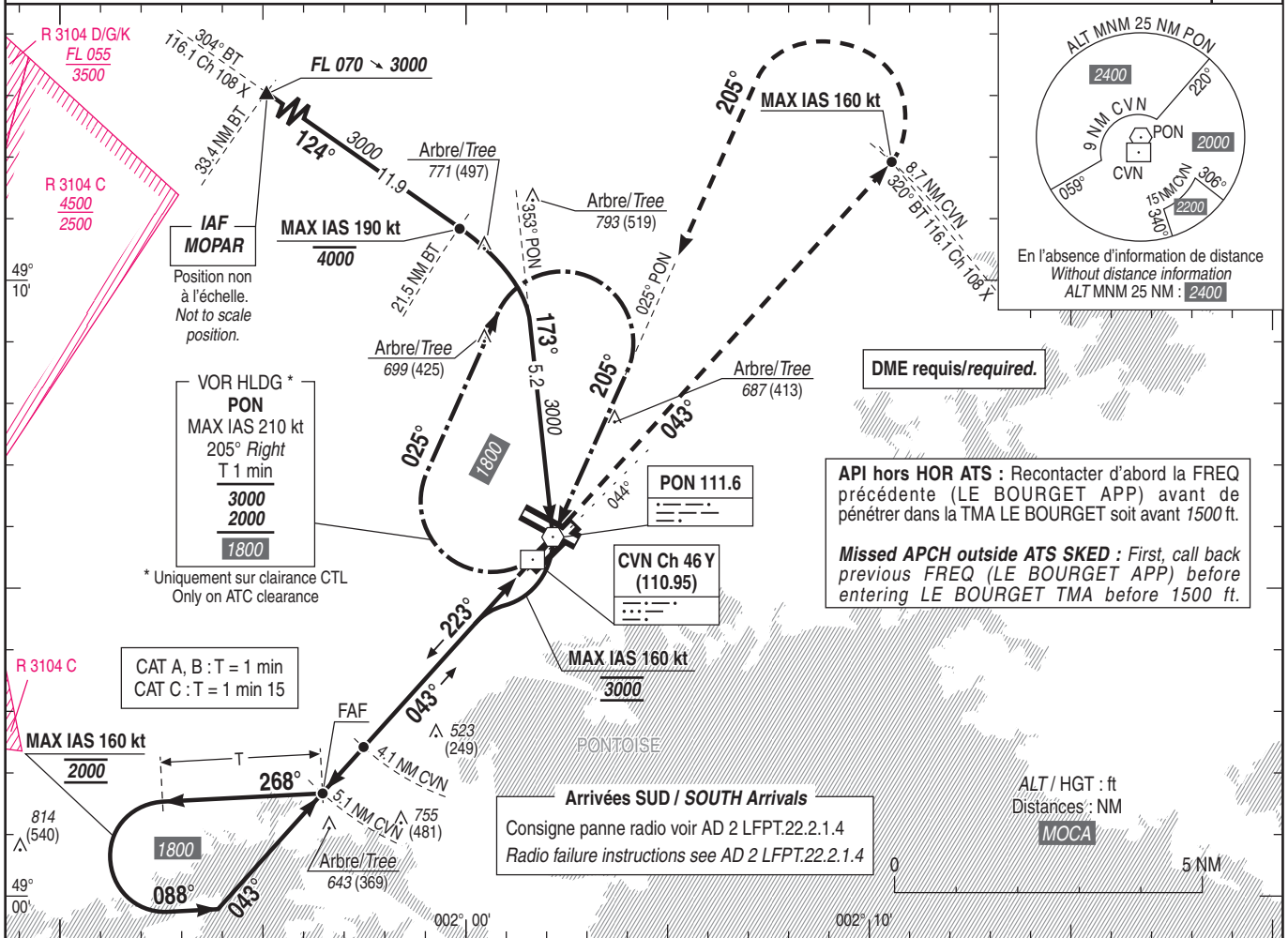
Instrument approach

CAT A B C

ALT AD : 325, THR : 274 (10 hPa)

MOPAR VOR Z RWY 05

ATIS PONTOISE : 124.125
 APP : DE GAULLE Approche/Approach 118.150 - 119.850 - 121.155 - 125.830 - 126.430 - 136.275 - 126.575 (s)
 LE BOURGET Approche/Approach 118.800
 TWR : PONTOISE Tour/Tower 121.200
 Absence ATS : A/A FR seulement. Obtenir QNH auprès de ATIS LE BOURGET 120.000
 A/A FR only. Obtain QNH with LE BOURGET ATIS 120.000



→ THR (NM)	5.0	4.0	1.3
→ DME CVN (NM)	5.1	4.1	1.4

MNM AD : distances verticales en pieds, RVR et VIS en mètres / vertical distances in feet, RVR and VIS in metres. REF HGT : ALT THR

CAT	VOR + DME CVN			MVL / Circling ⁽¹⁾		MVL / Circling ⁽¹⁾ Absence ATS		DIST CVN			
	MDA (H)	RVR	OCH	MDA (H)	VIS	MDA (H)	VIS	NM	4	3	2
A		1500		1000 (730)	1500	1100 (830)	1500				
B	750 (480)	1500	475	1020 (740)	1600	1120 (840)	1600	1620	1280	950	
C		1800		1190 (910)	2400	1290 (1010)	2400	(HGT)	(1346)	(1006)	(676)

Observations / Remarks : (1) Circuit AD RWY 23 et RWY 30 à droite - RWY 12 et RWY 30 : 1000 (700).
 (1) Circuit AD RWY 23 and RWY 30 right hand - RWY 12 and RWY 30 : 1000 (700).

FAF - MAPT	3.7 NM	70 kt 3 min 10	85 kt 2 min 36	100 kt 2 min 13	115 kt 1 min 56	130 kt 1 min 42	145 kt 1 min 32	160 kt 1 min 23
VSP (ft/min)		395	480	565	650	735	820	905