

**APPROCHE AUX INSTRUMENTS**

**PONTOISE CORMEILLES EN VEXIN**

Instrument approach

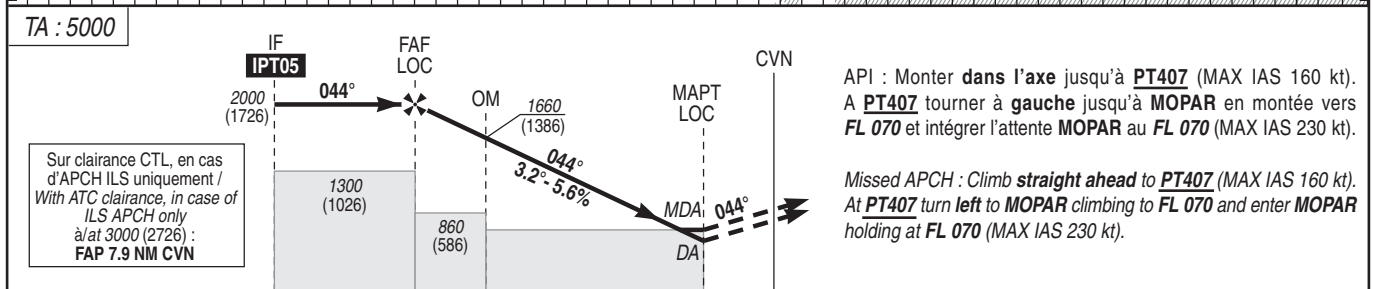
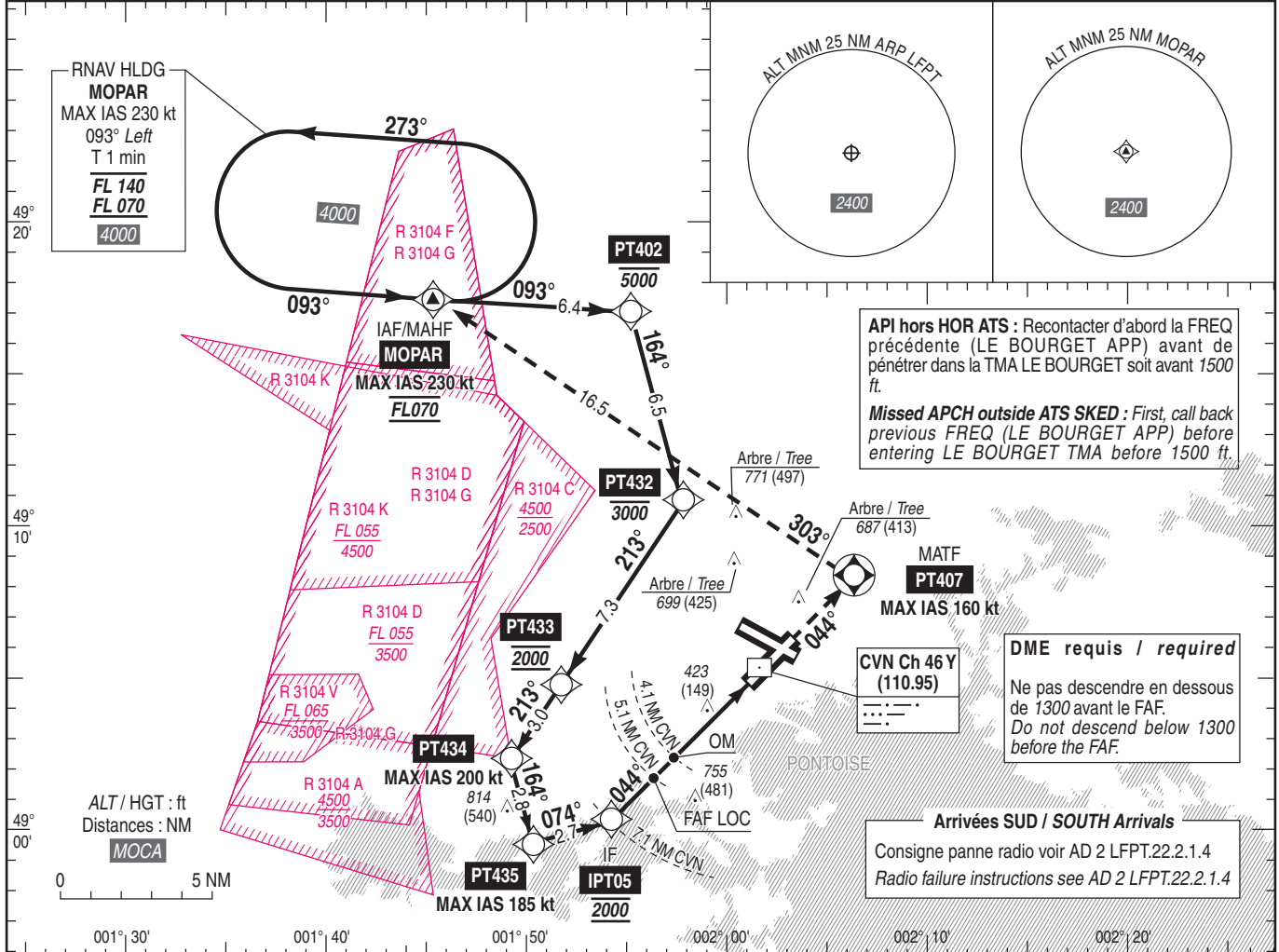
CAT A B C

ALT AD : 325, THR : 274 (10 hPa)

MOPAR ILS Y CAT 1 ou/ou LOC Y RWY 05

ATIS PONTOISE : 124.125  
 APP : DE GAULLE Approche/Approach 118.150 - 119.850 - 121.155 - 125.830 - 126.430 - 136.275 - 126.575 (s)  
 LE BOURGET Approche/Approach 118.800  
 TWR : PONTOISE Tour/Tower 121.200  
 Absence ATS : A/A FR seulement. Obtenir QNH auprès de ATIS LE BOURGET 120.000  
 A/A FR only. Obtain QNH with ATIS LE BOURGET 120.000

<b>RNAV 1</b> requis pour/required for INA et/and API/Missed approach	<b>ILS-DME</b> CVN 110.95 RDH : 43	<b>VAR</b> 1° E (20)
--	--	----------------------------



→ THR (NM)	7.0	5.0	4.0	0.9
→ DME CVN (NM)	7.1	5.1	4.1	1.0

MNM AD : distances verticales en pieds, RVR et VIS en mètres / vertical distances in feet, RVR and VIS in metres. REF HGT : ALT THR

CAT	ILS			LOC + DME CVN			MVL / Circling (1)		MVL/Circling absence ATS (1)		DIST CVN					
	DA (H)	RVR	OCH	MDA (H)	RVR	OCH	MDA (H)	VIS	MDA (H)	VIS	NM	5	4	3	2	
A			161				1000 (730)	1500	1100 (830)	1500						
B	480 (200)	750	171	670 (400)	1400	395	1020 (740)	1600	1120 (840)	1600						
C			186				1190 (910)	2400	1290 (1010)	2400						
												ALT (HGT)	1960 (1686)	1620 (1346)	1280 (1006)	940 (666)

Observations / Remarks : (1) Circuit RWY 23 et RWY 30 droite - RWY 12 et RWY 30 : 1000 (700)  
 (1) Right hand circuit RWY 23 and RWY 30 right hand - RWY 12 and RWY 30 : 1000 (700)  
 Panne de guidage GNSS lors de l'approche / Loss of GNSS guidance during approach : voir / see AIP ENR 1.5.

FAF - THR	5 NM	70 kt 4 min 15	85 kt 3 min 30	100 kt 2 min 58	115 kt 2 min 35	130 kt 2 min 17	145 kt 2 min 03	160 kt 1 min 51
VSP (ft/min)		395	480	565	650	735	820	905