

**APPROCHE AUX INSTRUMENTS**

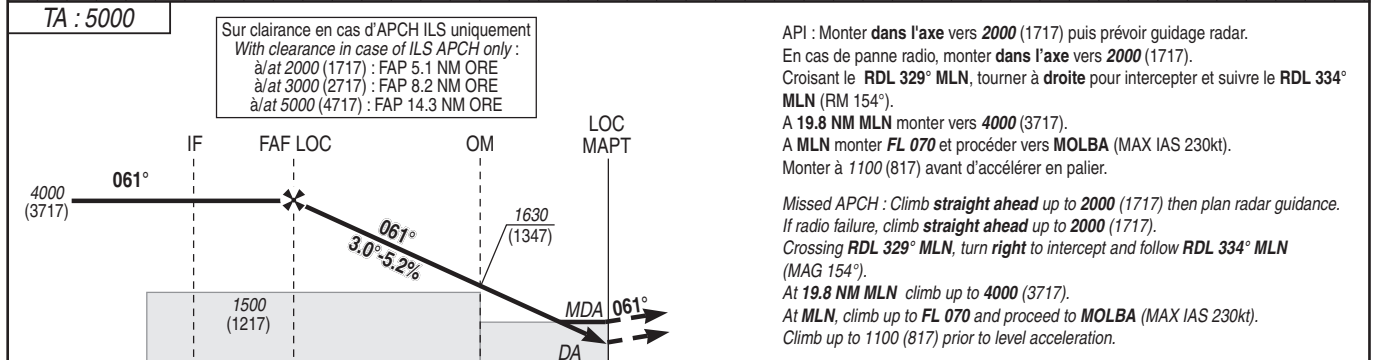
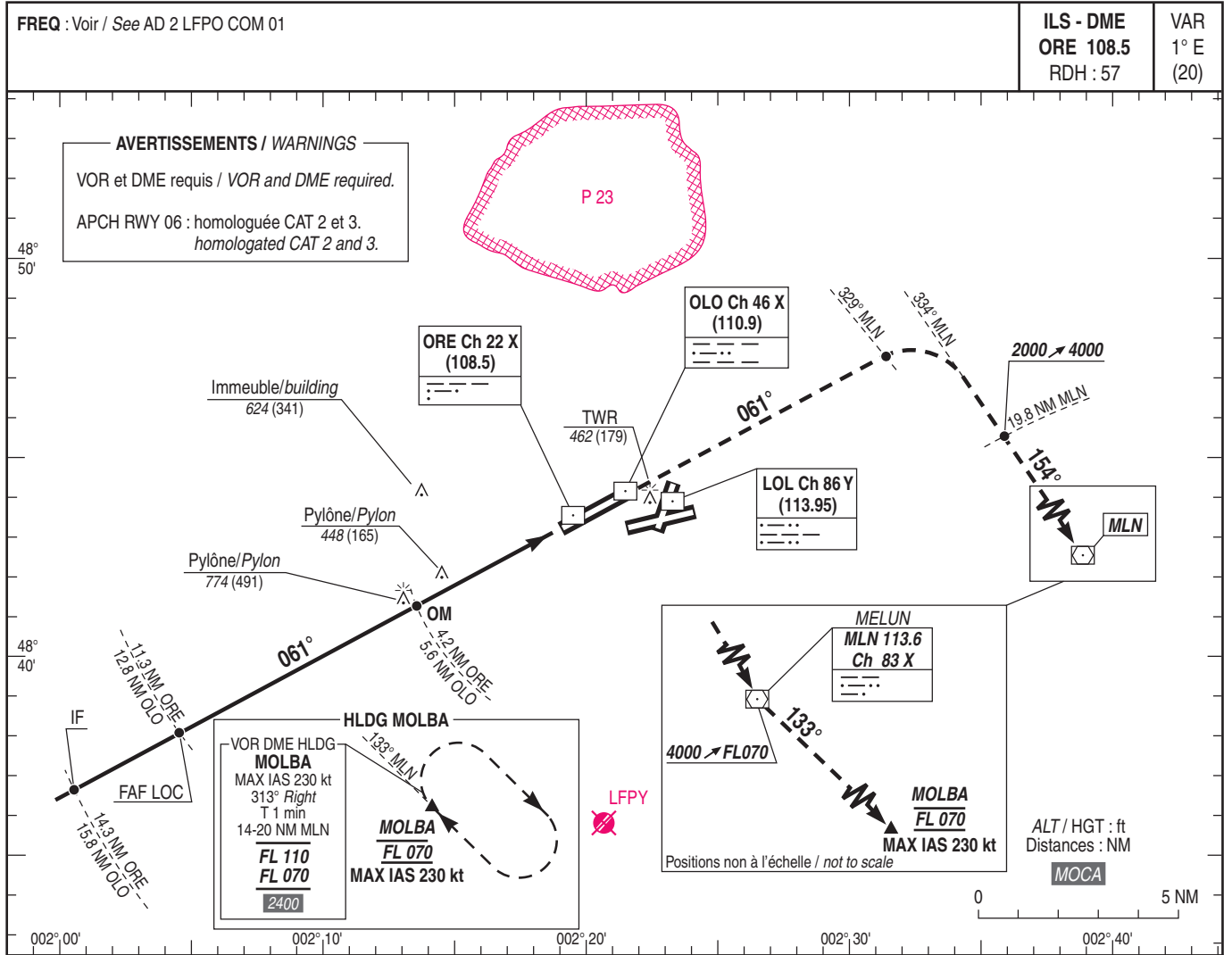
PARIS ONLY

Instrument approach

CAT A B C D

ALT AD : 291, DTHR : 283 (11 hPa)

FNA ILS CAT I ou/or CAT II et/and CAT III ou/or LOC RWY 06



→ DTHR (NM)	14.1	11.1	4	0.8
→ ORE (NM)	14.3	11.3	4.2	1
→ OLO (NM)	15.8	12.8	5.6	2.4

MNM AD : distances verticales en pieds, RVR et VIS en mètres / vertical distances in feet, RVR and VIS in metres. REF HGT : ALT DTHR

CAT	ILS		OCH ILS CAT 1	OCH ILS CAT 2	LOC			MVL / Circling		DME ORE
	DA (H)	RVR			MDA (H)	RVR	OCH	MDA (H)	VIS	
A	490 (200)	550	139	49	720 (440)	1300	432	780 (490)	1500	NM 11 10 9 8 7 6 5 4 3 2 ALT 3880 3550 3210 2880 2550 2220 1890 1560 1240 920 (HGT) (3597) (3267) (2927) (2597) (2267) (1937) (1607) (1277) (957) (637)
B			148	59				860 (570)	1600	
C			163	72				1170 (880)	2400	
D			173	84				1190 (900)	3600	
DL			176	85				-	-	

Observations/Remarks : NIL

FAF - DTHR	11.1 NM	70 kt	85 kt	100 kt	115 kt	130 kt	160 kt	185 kt
		9 min 32	7 min 51	6 min 41	5 min 48	5 min 08	4 min 10	3 min 37
VSP (ft/min)		372	451	531	610	690	849	982