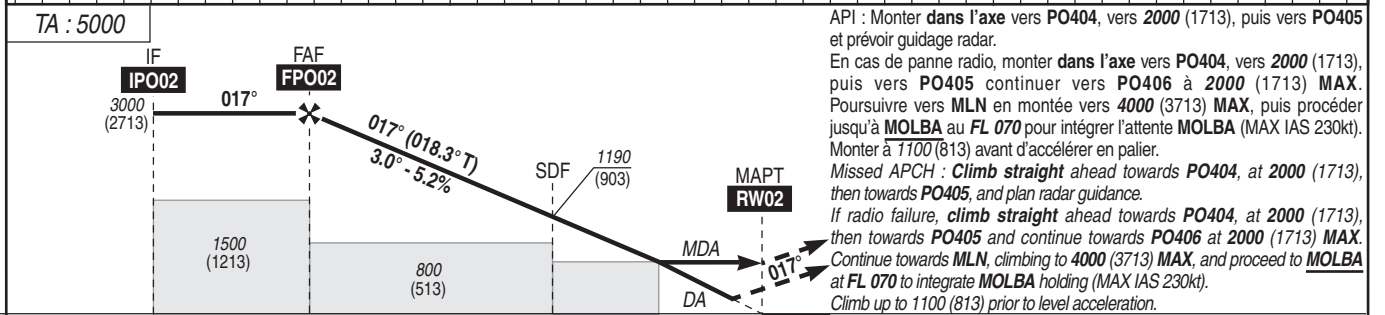
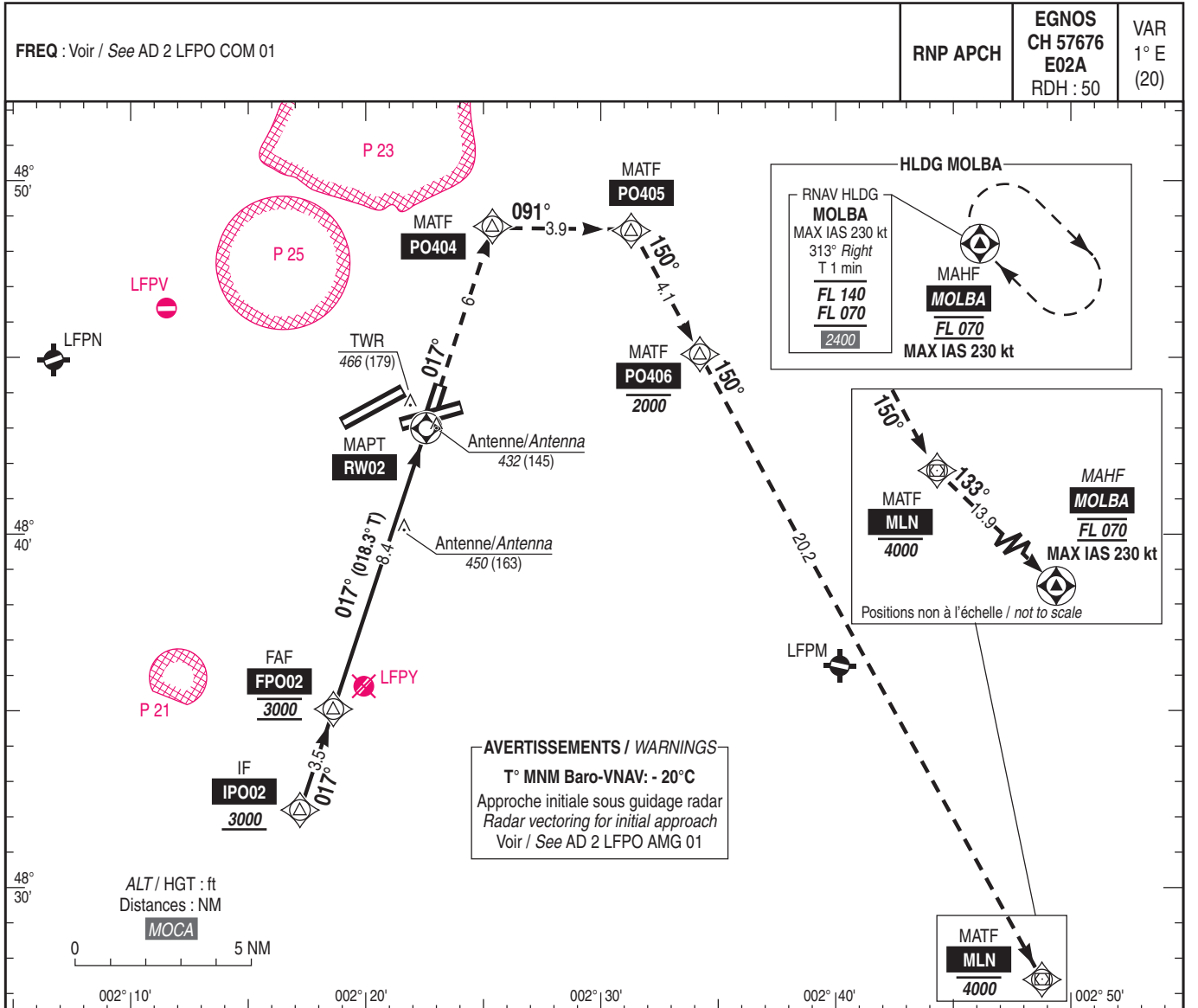


**APPROCHE AUX INSTRUMENTS**

PARIS ONLY

Instrument approach  
CAT A B C D  
ALT AD : 291, THR : 287 (11 hPa)

FNA RNP RWY 02



TA : 5000  
MNM AD : distances verticales en pieds, RVR et VIS en mètres / vertical distances in feet, RVR and VIS in metres. REF HGT : ALT THR

CAT	LPV			LNAV-VNAV			LNAV			MVL / Circling		DIST RW02			
	DA (H)	RVR	OCH	DA (H)	RVR	OCH	MDA (H)	RVR	OCH	MDA (H)	VIS	NM	8	7	6
A			135	570 (280)	900	276				780 (490)	1500	ALT	2880	2570	2250
B			143	580 (290)	900	286	690 (400)	1400	391	860 (570)	1600	(HGT)	(2593)	(2283)	(1963)
C	490 (200)	750	153	590 (300)	900	296				1170 (880)	2400		5	4	3
D			160	600 (310)	1000	310				1190 (900)	3600		1930	1610	1290
DL			160										(1643)	(1323)	(1003)
															2
															970
															(683)

Observations / Remarks : Panne de guidage GNSS durant l'approche / Loss of GNSS guidance during approach : voir / see AIP ENR 1.5.

FAF - RW02	8.4 NM	70 kt	85 kt	100 kt	115 kt	130 kt	160 kt	185 kt
		7 min 10	5 min 54	5 min 01	4 min 22	3 min 52	3 min 08	2 min 43
VSP (ft/min)		370	450	530	610	685	845	980