

APPROCHE AUX INSTRUMENTS

ORLEANS SAINT DENIS DE L'HOTEL

Instrument approach

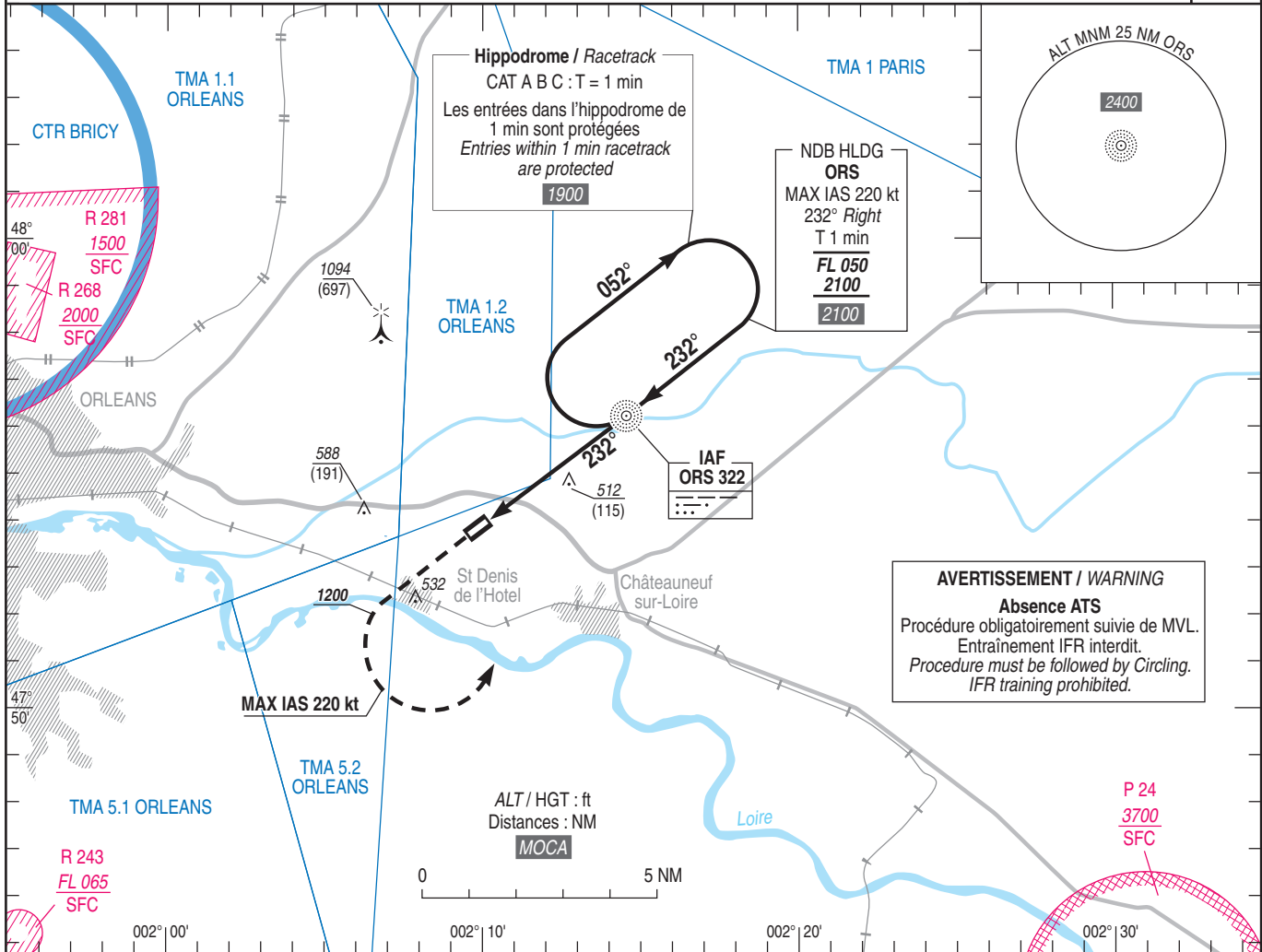
CAT A B C

ALT AD : 397 (15 hPa), THR : 397

NDB RWY 23

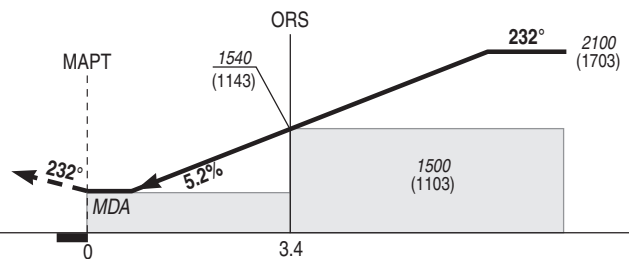
APP : NIL
TWR : NIL
AFIS : SAINT DENIS Information 122.400
Absence ATS : A/A FR seulement. Obtenir le QNH local sur STAP ou le QNH d'ORLY auprès de ATIS ORLY 126.505 (FR) 131.355 (EN).
A/A FR only. Obtain local QNH from STAP or ORLY QNH from ATIS ORLY 126.505 (FR) 131.355 (EN).
Contacter BRICY Approche 122.700 si TMA ORLEANS active / Contact BRICY Approach 122.700 if TMA ORLEANS active.

VAR
1° E
(20)



API : Monter QDR 232° ORS (RM 232°). A 1200 (803),
tourner à gauche vers ORS en montée vers 2100 (1703).
Ne pas tourner avant le MAPT.
Monter à 1200 (803) avant d'accélérer en palier.

Missed APCH : Climb QDR 232° ORS (MAG 232°). At 1200 (803),
turn left towards ORS climbing up to 2100 (1703).
Do not turn before MAPT.
Climb up to 1200 (803) prior to level acceleration.



THR ← (NM)

MNM AD : distances verticales en pieds, RVR et VIS en mètres / vertical distances in feet, RVR and VIS in metres.

REF HGT : ALT AD

| CAT | NDB | | | MVL / Circling (1) | | MVL / Circling (1) Absence ATS sans QNH local without local QNH | |
|-----|-----------|------|-----|--------------------|------|--|------|
| | MDA (H) | RVR | OCH | MDA (H) | VIS | MDA (H) | VIS |
| A | | | | 890 (490) | 1500 | 1110 (720) | 1500 |
| B | 760 (370) | 1000 | 361 | 900 (500) | 1600 | 1110 (720) | 1600 |
| C | | | | 1490 (1090) | 2400 | 1720 (1320) | 2400 |

Observations / Remarks : (1) MVL interdite au Sud de la piste / Circling prohibited South of RWY.

| NDB - MAPT | 3.4 NM | 70 kt 2 min 57 | 85 kt 2 min 27 | 105 kt 2 min 04 | 115 kt 1 min 48 | 130 kt 1 min 35 | 145 kt 1 min 25 | 160 kt 1 min 17 |
|--------------|--------|-------------------|-------------------|--------------------|--------------------|--------------------|--------------------|--------------------|
| VSP (ft/min) | | 370 | 450 | 530 | 610 | 680 | 760 | 840 |