

APPROCHE AUX INSTRUMENTS

ORLEANS SAINT DENIS DE L'HOTEL

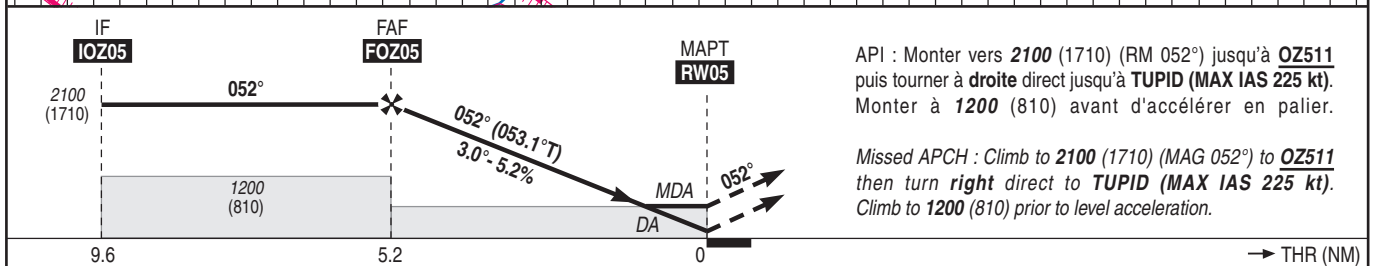
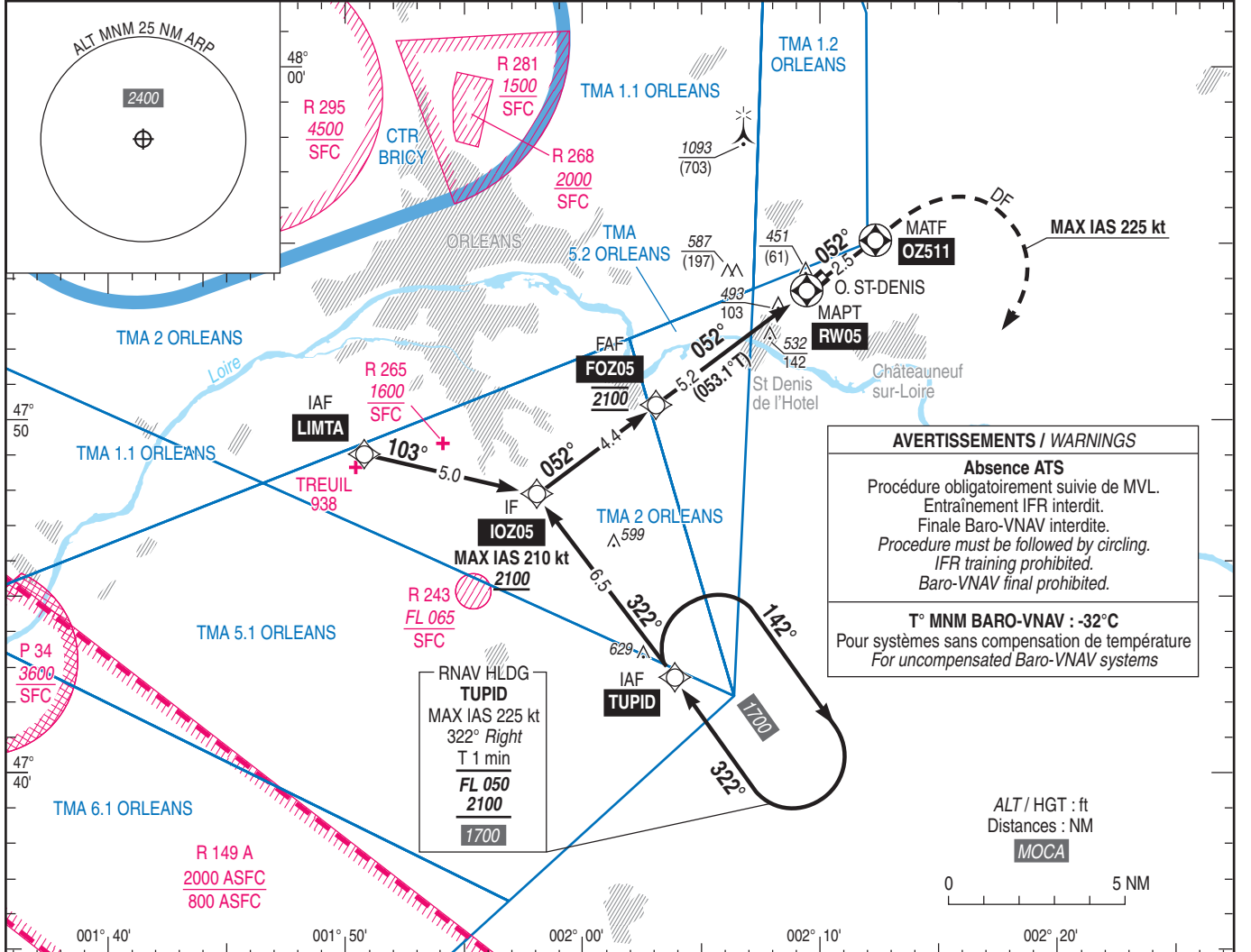
Instrument approach

CAT A B C

ALT AD : 397, THR : 390 (14 hPa)

RNP RWY 05

APP : NIL TWR : NIL AFIS : SAINT DENIS Information 122.400 Absence ATS : A/A FR seulement. Obtenir le QNH local sur STAP ou le QNH d'ORLY auprès d'ATIS ORLY 126.505 (FR) 131.355 (EN). A/A FR only. Obtain local QNH from STAP or ORLY QNH from ATIS ORLY 126.505 (FR) 131.355 (EN). Contacter BRICY Approche 122.700 si TMA ORLEANS active / Contact BRICY Approach 122.700 if TMA ORLEANS active.	RNP APCH	EGNOS Ch 74931 E05A RDH : 49	VAR 1° E (20)
---	----------	---------------------------------------	---------------------



MNM AD : distances verticales en pieds, RVR et VIS en mètres / vertical distances in feet, RVR and VIS in metres. REF HGT : ALT THR

CAT	LPV			LNAV-VNAV			LNAV			MVL / Circling (1)		MVL / Circling (1) sans QNH local Without local QNH		DIST RW05				
	DA (H)	RVR	OCH	DA (H)	RVR	OCH	MDA (H)	RVR	OCH	MDA (H)	VIS	MDA (H)	VIS	NM	5	4	3	2
A	590 (200)		190	640 (250)	232					890 (500)	1500	1110 (720)	1500		2030	1710	1400	1080
B	600 (210)	1200	203	640 (250)	1300	232	780 (390)	1500	388	890 (500)	1600	1110 (720)	1600	(HGT)	(1640)	(1320)	(1010)	(690)
C	610 (220)		211	650 (260)	253			1800		1490 (1100)	2400	1720 (1330)	2400					

Observations / Remarks : (1) MVL interdite au Sud de la piste / Circling prohibited South of RWY.

Panne de guidage GNSS lors de l'approche / Loss of GNSS guidance during approach : voir/see AIP ENR 1.5.

STAP : Voir/see AD 2 LFOZ.23

FOZ05 - RW05	5.2 NM	70 kt	85 kt	100 kt	115 kt	130 kt	145 kt	160 kt
		4 min 28	3 min 41	3 min 08	2 min 43	2 min 24	2 min 09	1 min 57
VSP (ft/min)		370	450	530	610	690	770	850