

APPROCHE AUX INSTRUMENTS

CHOLET LE PONTREAU

Instrument approach

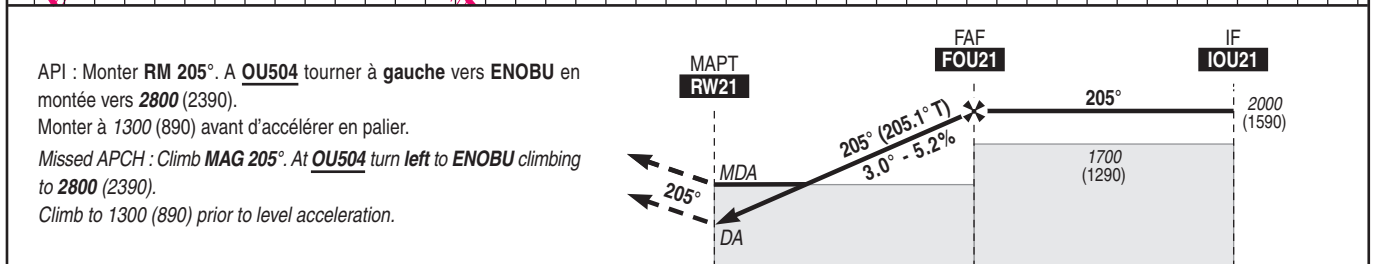
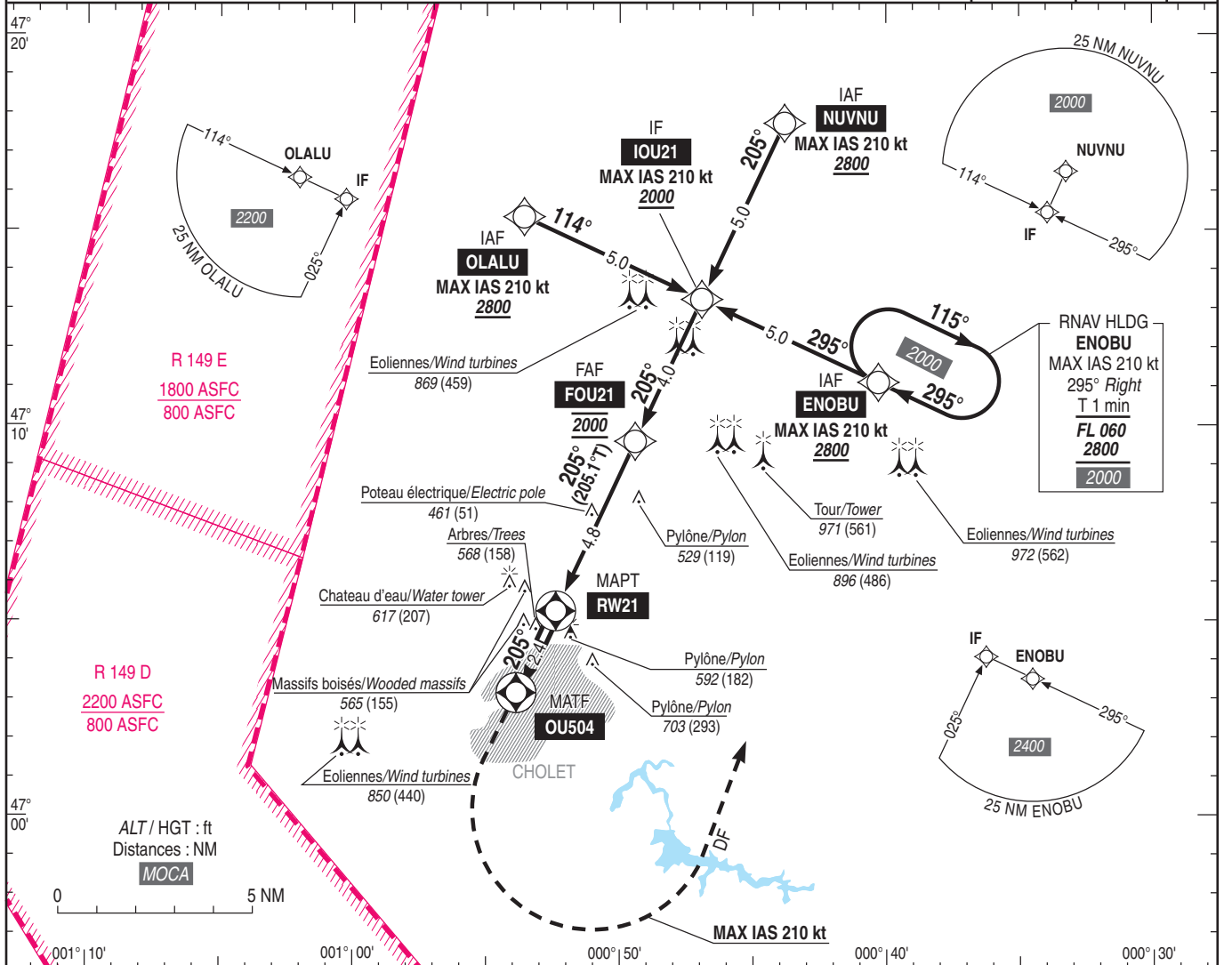
RNP Y RWY 21

CAT A B C

(R 149 D et/and E actives/active)

ALT AD : 443, THR : 410 (15 hPa)

<p>APP : NANTES Approche / Approach 124.250 - 119.400 (s) TWR : NIL AFIS : CHOLET Information 120.405 Absence ATS : A/A FR seulement. Obtenir le QNH de NANTES sur ATIS NANTES 126.930 ou NANTES Information 130.275 - 119.400 (s) A/A FR only. Obtain QNH NANTES on ATIS NANTES 126.930 or NANTES Information 130.275 - 119.400 (s)</p>	<p>RNP APCH</p>	<p>EGNOS Ch 70891 E21B RDH : 49</p>	<p>VAR 0° (20)</p>
--	-----------------	---	----------------------------



THR ← (NM) 0 4.8 8.8

MNM AD : distances verticales en pieds, RVR et VIS en mètres / vertical distances in feet, RVR and VIS in metres. REF HGT : ALT THR

CAT	LPV			LNAV			MVL / Circling (1)		MVL/Circling (1) (2)		DIST RW21				
	DA (H)	RVR	OCH	MDA (H)	RVR	OCH	MDA (H)	VIS	MDA (H)	VIS	NM	ALT (HGT)	2	3	4
A	710 (300)		288	820 (410)	1500		1000 (590)	1500	1120 (710)	1500					
B	710 (300)	1400	300	820 (410)	1500	407	1000 (590)	1600	1120 (710)	1600					
C	720 (310)		308		1900		1090 (680)	2400	1220 (810)	2400					

Observations /Remarks : (1) MVL interdites à l'Est de la piste. Circuit à droite RWY 21 / Circling prohibited East of RWY. Right hand circuit RWY 21.
(2) HJ seulement / Daytime only.
Panne de guidage GNSS lors de l'approche / Loss of GNSS guidance during approach : voir/see AIP ENR 1.5.

FAF - RW21	4.8 NM	70 kt	80 kt	90 kt	100 kt	110 kt	120 kt	130 kt	140 kt	150 kt	160 kt	170 kt	180 kt
VSP (ft/min)		4 min 9	3 min 38	3 min 38	2 min 54	2 min 38	2 min 25	2 min 14	2 min 04	1 min 56	1 min 49	1 min 42	1 min 37
		370	420	480	530	580	640	690	740	800	850	900	960