

APPROCHE AUX INSTRUMENTS

TOURS VAL DE LOIRE

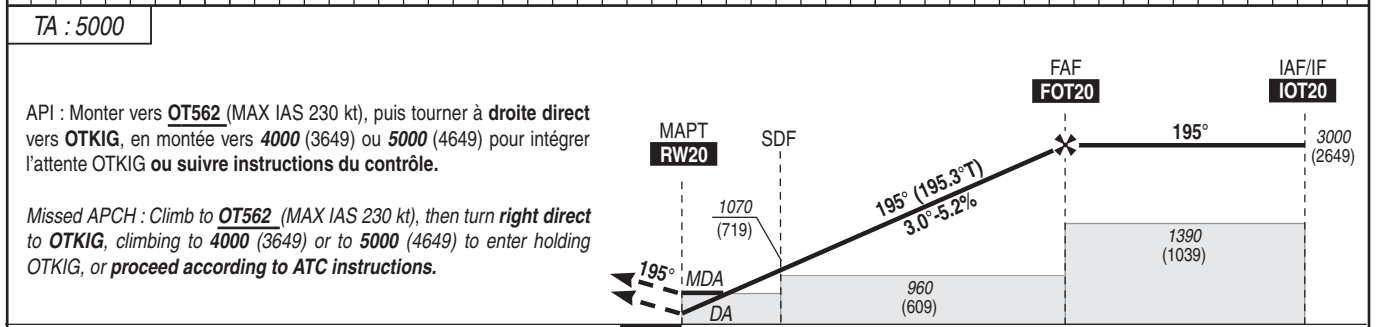
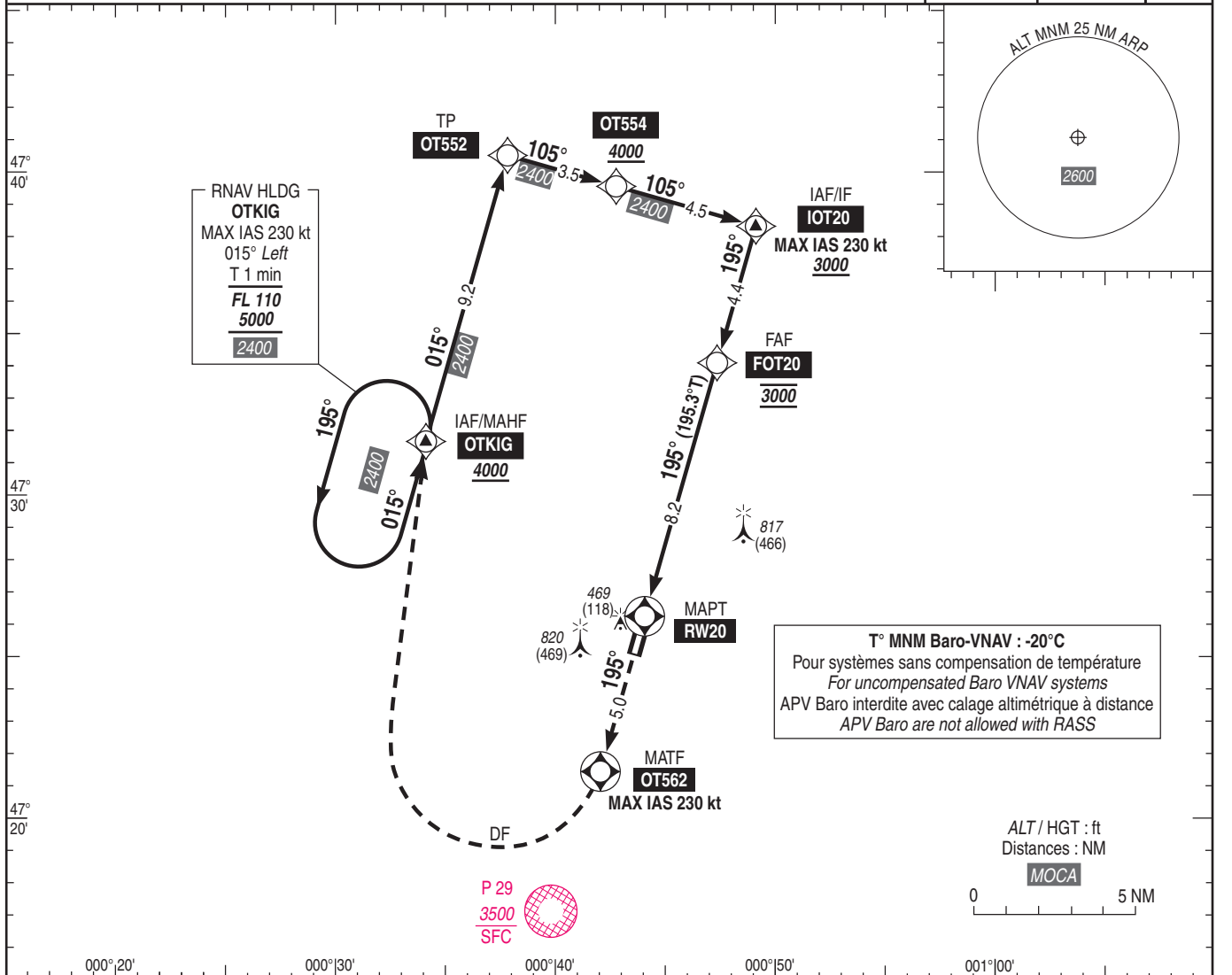
Instrument approach

CAT A B C D

ALT AD : 357 , **THR : 351 (13 hPa)**

RNP RWY 20

APP : SEINE Approche / Approach 134.875 TWR : TOURS Tour / Tower 124.400 AFIS : TOURS Information 124.400	RNP APCH	EGNOS Ch 93358 E20A RDH : 49	VAR 1° E (20)
--	-----------------	--	----------------------------



THR ← (NM) 0 2.1 8.2 12.6

MNM AD : distances verticales en pieds, RVR et VIS en mètres. / Vertical distances in feet, RVR and VIS in metres REF HGT : ALT THR

CAT	LPV (1)			LNAV-VNAV			LNAV			MVL (2) Circling		DIST RW20
	DA (H)	RVR	OCH	DA (H)	RVR	OCH	MDA (H)	RVR	OCH	MDA (H)	VIS	
A			192	610 (250)		229				860 (510)	1500	NM 8 7 6 5 4 3 2 1 ALT 2950 2630 2310 1990 1670 1360 1040 720 (HGT) (2599) (2279) (1959) (1639) (1319) (1009) (689) (369)
B			204	610 (250)		241				880 (530)	1600	
C	610 (250)	800	212	620 (260)	800	260	720 (370)	1000	365	1220 (870)	2400	
D			223	630 (280)		279				1220 (870)	3600	

Observations/Remarks : (1) Minimums majorés / Increased minimums (2) MVL interdites à l'ouest et de nuit. / Circling prohibited West of RWY and by night.

FAF - MAPT	8.2 NM	70 kt	85 kt	100 kt	115 kt	130 kt	145 kt	160 kt	185 kt
VSP (ft/min)		370	450	530	610	685	765	845	980