

APPROCHE AUX INSTRUMENTS

TOURS VAL DE LOIRE

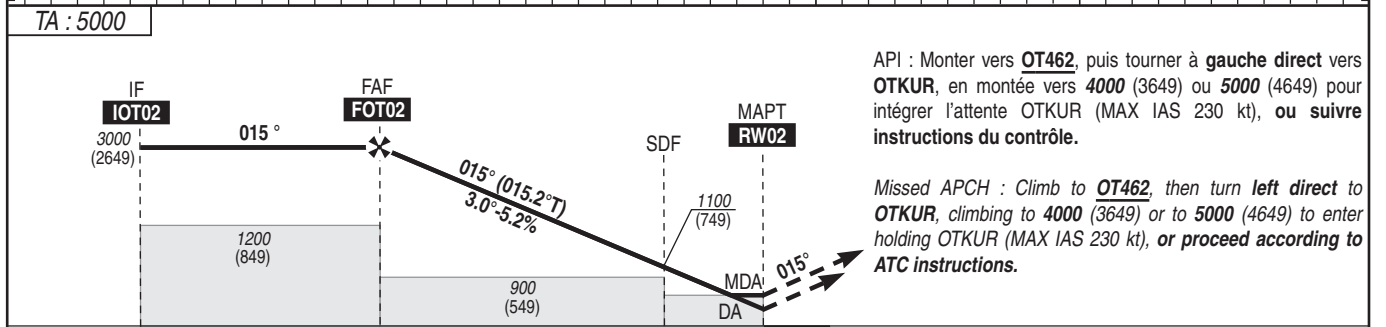
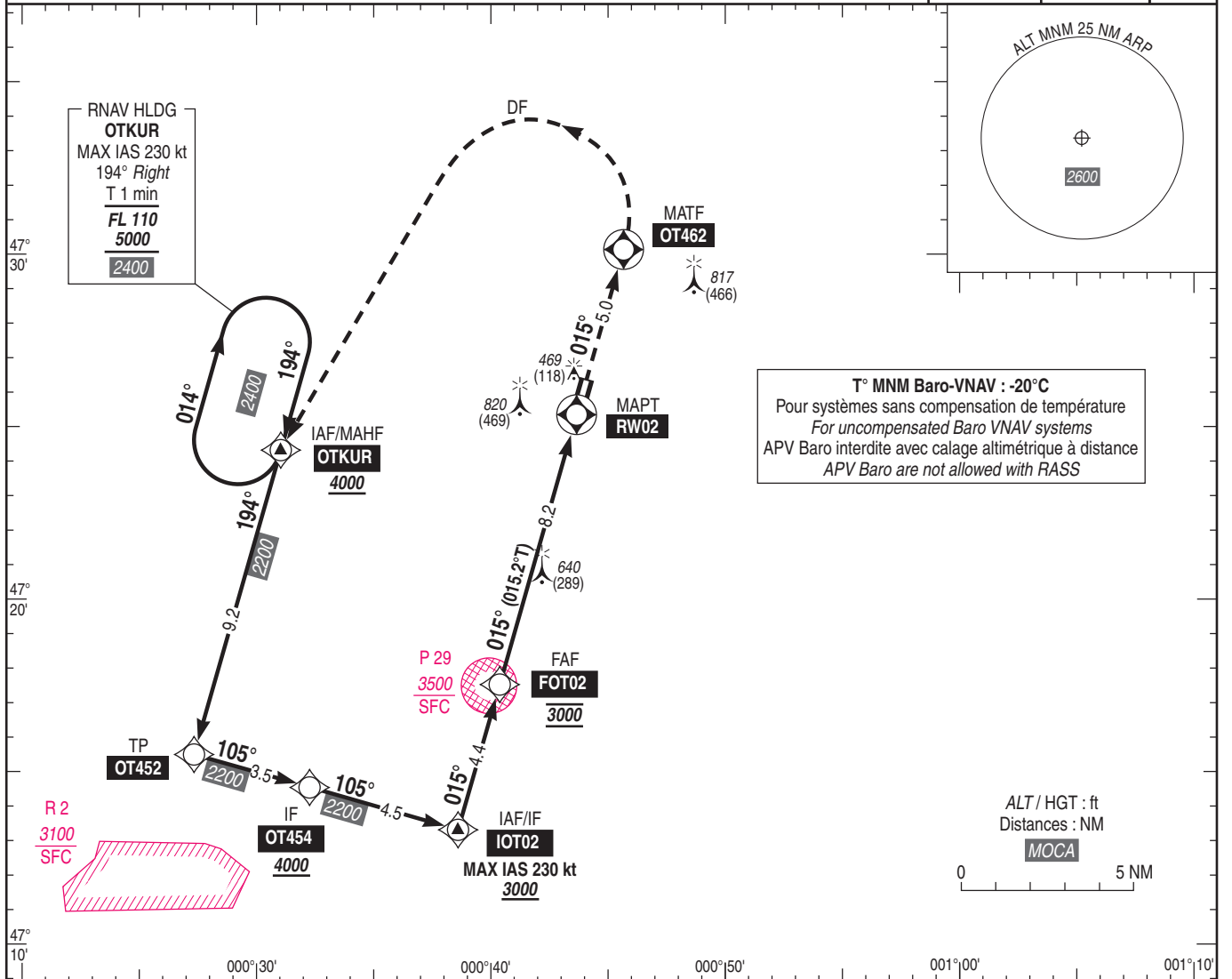
Instrument approach

CAT A B C D

ALT AD : 357 , **THR : 351 (13 hPa)**

RNP RWY 02

APP : SEINE Approche / Approach 134.875 TWR : TOURS Tour / Tower 124.400 AFIS : TOURS Information 124.400	RNP APCH	EGNOS Ch 87952 E02A RDH : 49	VAR 1° E (20)
--	-----------------	--	----------------------------



THR → (NM) 12.6 8.2 2.2 0

MNM AD : distances verticales en pieds, RVR et VIS en mètres. / Vertical distances in feet, RVR and VIS in metres

REF HGT : ALT THR

CAT	LPV (1)			LNAV-VNAV (1)			LNAV			MVL (2) Circling		DIST RW02
	DA (H)	RVR	OCH	DA (H)	RVR	OCH	MDA (H)	RVR	OCH	MDA (H)	VIS	
A	610 (250)	1300	183	610 (250)	1300	209	680 (330)	1500	326	860 (510)	1700	NM 8 7 6 5 4 3 2 1 ALT 2950 2630 2310 1990 1670 1360 1040 720 (HGT) (2599) (2279) (1959) (1639) (1319) (1009) (689) (369)
B			213			222				880 (530)	1700	
C			213			230				1220 (870)	2400	
D			223			240				1220 (870)	3600	

Observations/Remarks : (1) Minimums majorés / Increased minimums (2) MVL interdites à l'ouest et de nuit. / Circling prohibited West of RWY and by night.

FAF - MAPT	8.2 NM	70 kt	85 kt	100 kt	115 kt	130 kt	145 kt	160 kt	185 kt
VSP (ft/min)		7 min 00	5 min 46	4 min 54	4 min 16	3 min 46	3 min 23	3 min 04	2 min 39
		370	450	530	610	685	765	845	980