

APPROCHE AUX INSTRUMENTS

ROUEN VALLEE DE SEINE

Instrument approach

CAT A B C

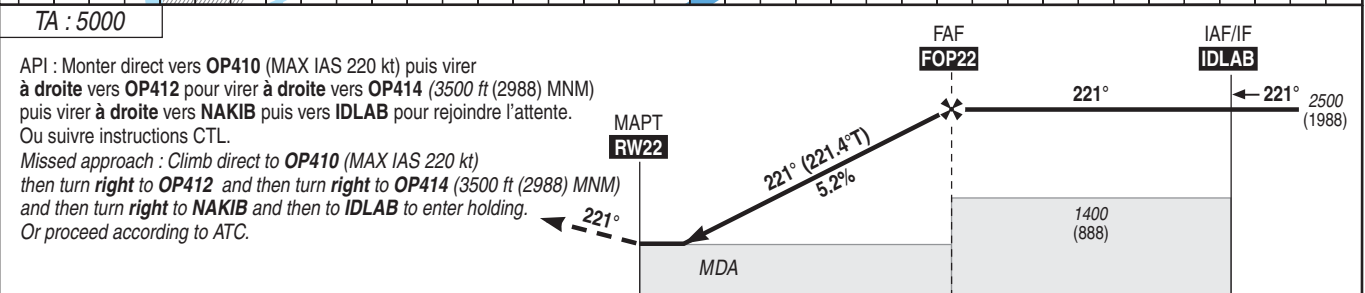
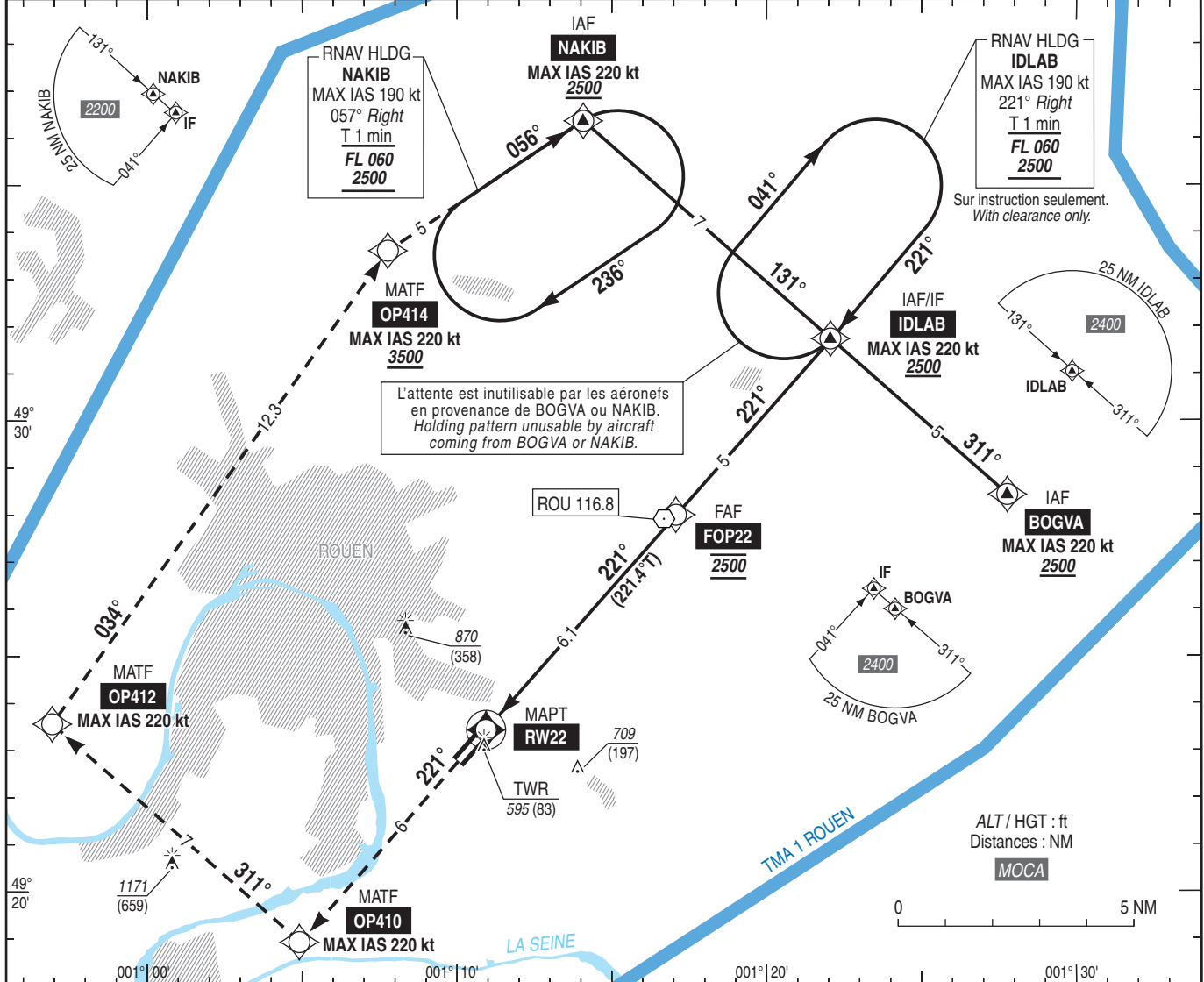
ALT AD : 512 (19 hPa), THR : 512

RNP RWY 22

ATIS ROUEN 120.730 ☎ 02 35 80 80 34
APP : ROUEN Approche / Approach 118.575
TWR : ROUEN Tour / Tower 120.200 (1)

(1) Absence ATS : A/A FR seulement. Obtenir QNH local sur STAP (120.730) ou QNH de PARIS CHARLES DE GAULLE auprès de PARIS ACC si indisponibilité du STAP.
A/A FR only. Obtain local QNH on STAP (120.730) or PARIS CHARLES DE GAULLE QNH from PARIS ACC if STAP not available.

RNP APCH
VAR 1° E (20)



RW22 ← (NM) 0 6.1 11.1
MNM AD : distances verticales en pieds, RVR et VIS en mètres. / Vertical distances in feet, RVR and VIS in metres. REF HGT : ALT AD

CAT	LNAV			MVL/Circling		MVL/Circling sans QNH local / without local QNH		DIST RW22						
	MDA (H)	RVR	OCH	MDA (H)	VIS	MDA (H)	VIS	NM	1	2	3	4	5	6
A				1010 (500)	1500	1280 (770)	1500		920	1200	1515	1835	2155	2470
B	920 (410)	1500	406	1170 (660)	1600	1440 (930)	1600	(HGT)	(408)	(688)	(1003)	(1323)	(1643)	(1958)
C				1270 (760)	2400	1540 (1030)	2400							

Observations / Remarks : Panne de guidage GNSS lors de l'approche : voir partie ENR 1.5 / Loss of GNSS guidance during approach : see part ENR 1.5.
Absence ATS : MVL : HJ seulement si PCL hors service. / Circling : daytime only if PCL U/S.

	70 kt	85 kt	100 kt	115 kt	130 kt	160 kt	185 kt
FAF - MAPT	6.1 NM	5 min 13	4 min 18	3 min 39	3 min 11	2 min 49	1 min 59
VSP (ft/min)		370	450	530	610	690	980