

APPROCHE AUX INSTRUMENTS

LE HAVRE OCTEVILLE

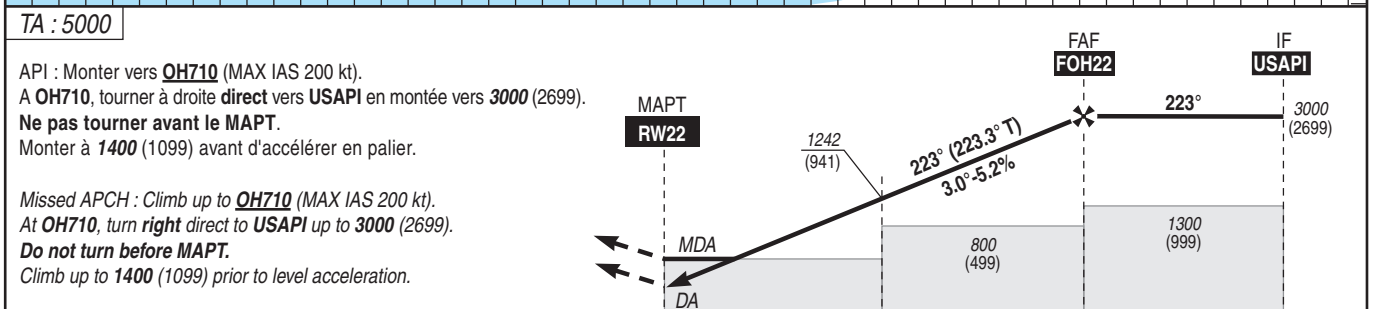
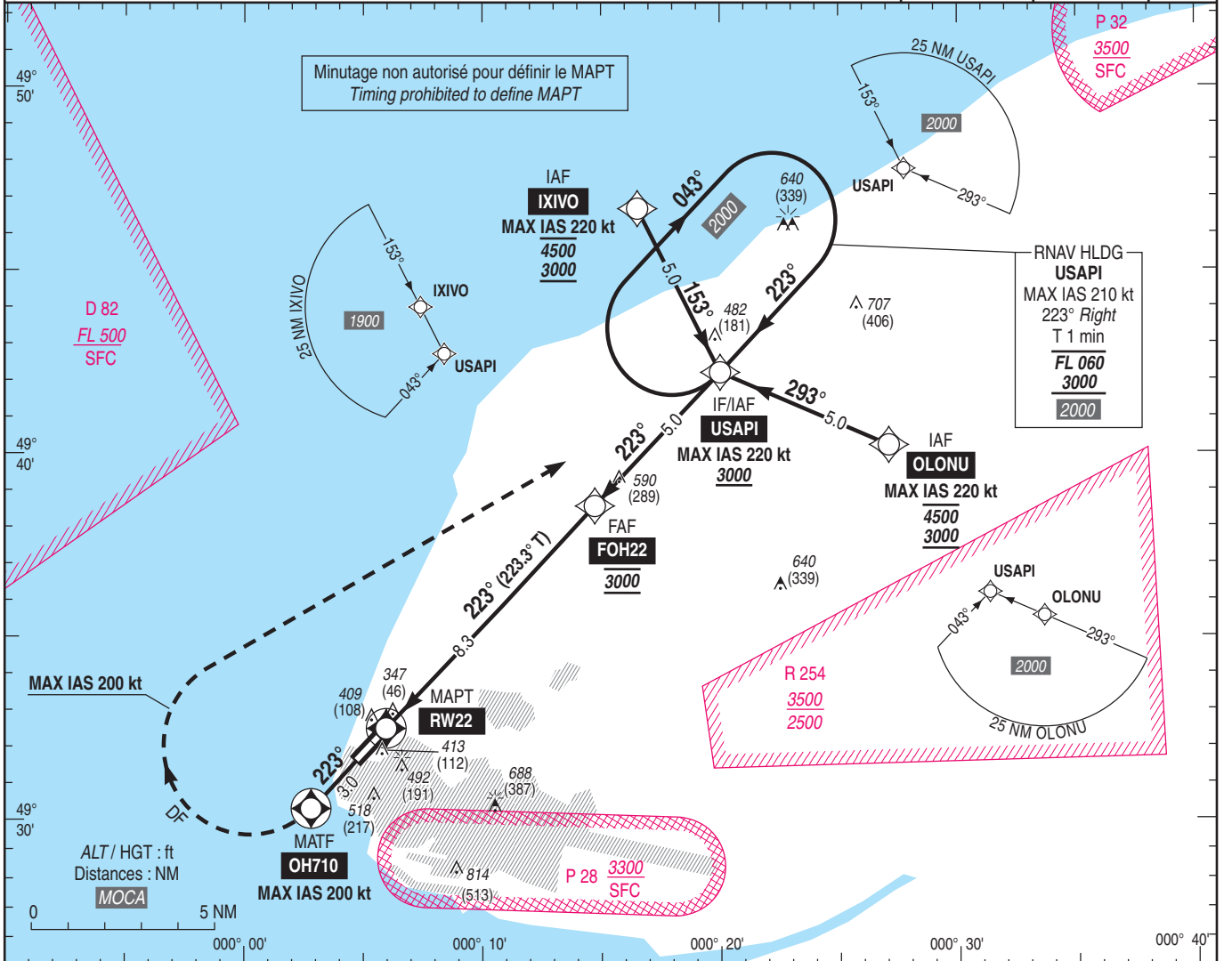
Instrument approach

CAT A B C D

ALT AD : 313, THR : 301 (11 hPa)

RNP RWY 22

| | | | |
|--|------------------------|---|-----------------------------------|
| <p>STAP 135.205 APP : DEAUVILLE Approche / Approach 120.350 AFIS : LE HAVRE Information 135.205 Absence ATS : A/A FR seulement. Obtenir le QNH local sur STAP (FR) ou le QNH de DEAUVILLE sur DEAUVILLE Approche. A/A FR only. Obtain local QNH from STAP (FR) or DEAUVILLE QNH on DEAUVILLE Approach.</p> | <p>RNP APCH</p> | <p>EGNOS Ch 62582 E22A RDH : 49</p> | <p>VAR 0° (20)</p> |
|--|------------------------|---|-----------------------------------|



THR ← (NM) 0 2.8 8.3 13.3

MNM AD : distances verticales en pieds, RVR et VIS en mètres / vertical distances in feet, RVR and VIS in metres. REF HGT : ALT THR

| CAT | LPV | | | LNAV | | | MVL / Circling (1) | | MVL / Circling (1)(2) Absence ATS Sans/Without QNH local | | DIST RW22 | | | | |
|-----|-----------|-----|-----|-----------|------|-----|--------------------|------|--|------|-----------|-------------|-------------|-------------|-------------|
| | DA (H) | RVR | OCH | MDA (H) | RVR | OCH | MDA (H) | VIS | MDA (H) | VIS | NM | 8 | 7 | 6 | 5 |
| A | 510 (200) | 800 | 185 | | | | 820 (520) | 1500 | 920 (620) | 1500 | ALT (HGT) | 2900 (2600) | 2580 (2280) | 2260 (1960) | 1940 (1640) |
| B | 510 (200) | 800 | 192 | | | | 820 (520) | 1600 | 920 (620) | 1600 | | 4 | 3 | 2 | 1 |
| C | 510 (210) | 800 | 203 | 670 (370) | 1300 | 364 | 920 (620) | 2400 | 1020 (720) | 2400 | | 1620 (1320) | 1310 (1010) | 990 (690) | 670 (370) |
| D | 520 (220) | 800 | 212 | | | | 1010 (700) | 3600 | 1110 (800) | 3600 | | | | | |

Observations / Remarks : Panne de guidage GNSS lors de l'approche / Loss of guidance during approach : voir / see AIP ENR 1.5
(1) MVL interdites au Sud-Est de la piste / Circling prohibited South-East of RWY.
(2) HJ seulement / only.