

**APPROCHE AUX INSTRUMENTS**

**LE HAVRE OCTEVILLE**

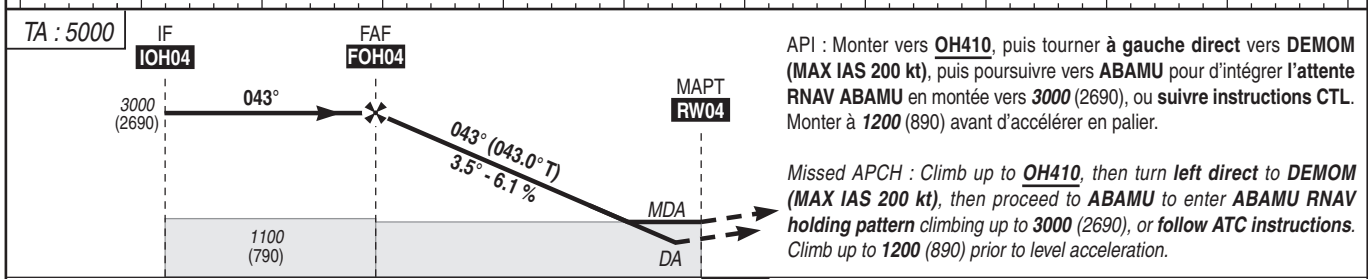
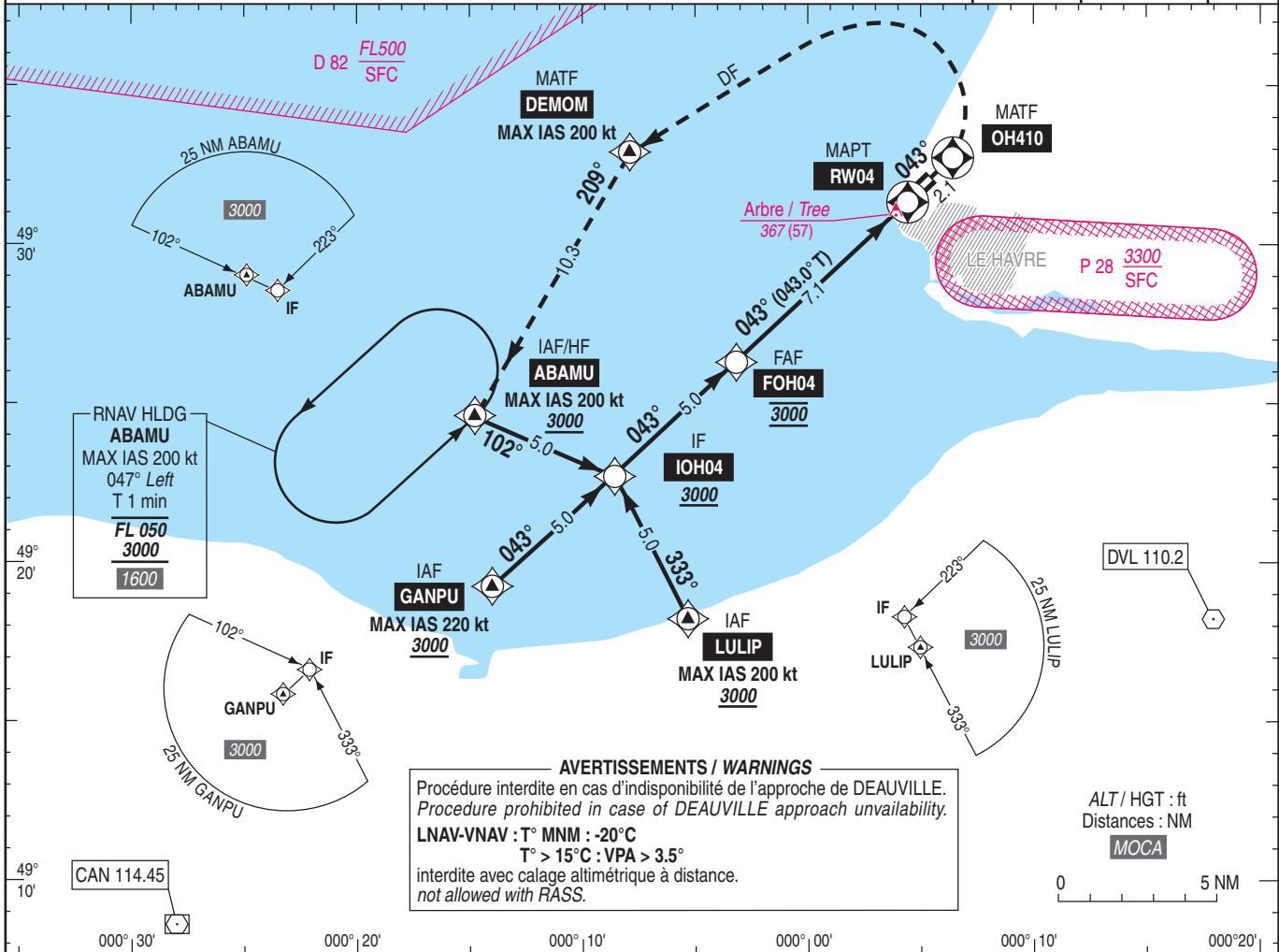
Instrument approach

CAT A B C D

ALT AD : 313, THR : 310 (12 hPa)

RNP RWY 04

<p><b>STAP</b> 135.205 APP : DEAUVILLE Approche / Approach 120.350 <b>AFIS</b> : LE HAVRE Information 135.205 Absence ATS : <b>A/A</b> FR seulement. Obtenir le QNH local sur STAP (FR) ou le QNH de DEAUVILLE sur DEAUVILLE Approche. <i>A/A</i> FR only. Obtain local QNH from STAP (FR) or DEAUVILLE QNH on DEAUVILLE Approach.</p>	<p><b>RNP APCH</b></p>	<p><b>EGNOS</b> Ch 61884 <b>E04A</b> RDH/TCH : 49</p>	<p><b>VAR</b> 0° (20)</p>
--	------------------------	---	-----------------------------------



MNM AD : distances verticales en pieds, RVR et VIS en mètres / vertical distances in feet, RVR and VIS in metres. REF HGT : ALT THR

CAT	LPV			LNAV-VNAV			LNAV			MVL / Circling (1)		MVL / Circling absence ATS (1) Sans/Without QNH local (2)		DIST RW04			
	DA (H)	RVR	OCH	DA (H)	RVR	OCH	MDA (H)	RVR	OCH	MDA (H)	VIS	MDA (H)	VIS	NM	7	6	5
A			193	610 (300)	1400	300				790 (480)	1900	890 (580)	1900	4	3	2	1
B			208	630 (320)	1400	314				820 (510)	1900	920 (610)	1900	1845 (1535)	1475 (1165)	1105 (795)	730 (420)
C	560 (250)	1300	217	640 (330)	1500	324	720 (410)	1900	410	920 (610)	2400	1020 (710)	2400				
D			230	650 (340)	1500	337				1020 (710)	3600	1120 (810)	3600				

Observations / Remarks : (1) MVL interdites au Sud-Est de la piste / Circling prohibited South-East of runway - (2) HJ seulement/only. Panne de guidage GNSS lors de l'approche / Loss of GNSS guidance during approach : voir / see AIP ENR 1.5.

FAF - RW04	7.13 NM	70 kt 6 min 07	85 kt 5 min 02	100 kt 4 min 17	115 kt 3 min 43	130 kt 3 min 17	160 kt 2 min 40	185 kt 2 min 19
VSP (ft/min)		430	525	620	710	805	990	1145