

APPROCHE AUX INSTRUMENTS

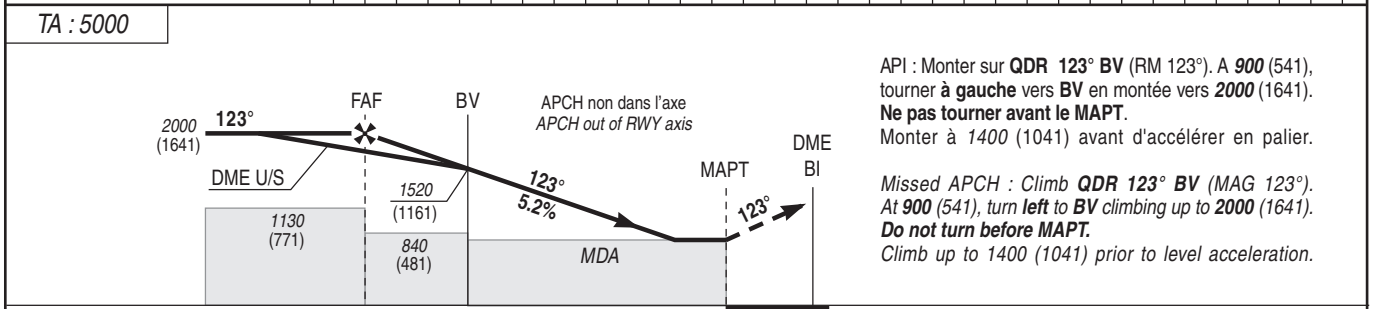
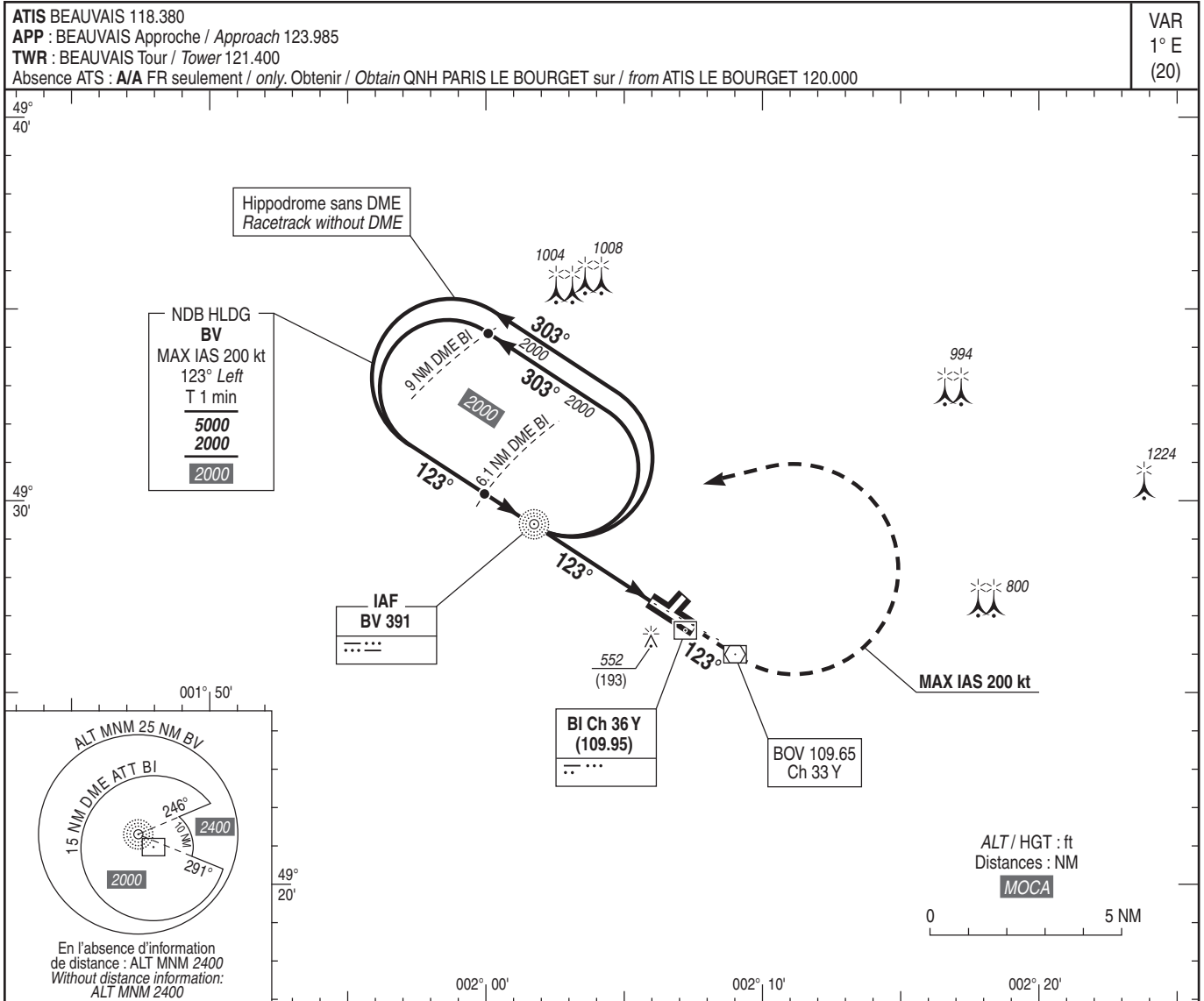
BEAUVAIS TILLE

Instrument approach

CAT A B C D

ALT AD : 359 (13 hPa), DTHR : 352

NDB RWY 12



API : Monter sur QDR 123° BV (RM 123°). A 900 (541), tourner à gauche vers BV en montée vers 2000 (1641). **Ne pas tourner avant le MAPT.** Monter à 1400 (1041) avant d'accélérer en palier.

Missed APCH : Climb QDR 123° BV (MAG 123°). At 900 (541), turn left to BV climbing up to 2000 (1641). **Do not turn before MAPT.** Climb up to 1400 (1041) prior to level acceleration.

→ THR (NM)	5	3.5	0	0
→ DME BI (NM)	6.1	4.7	1.2	0

MNM AD : distances verticales en pieds, RVR et VIS en mètres / vertical distances in feet, RVR and VIS in metres.							REF HGT : ALT AD				
CAT	NDB			MVL / Circling ⁽¹⁾		MVL / Circling ⁽¹⁾ absence ATS HJ seulement/only		DME BI			
	MDA (H)	RVR	OCH	MDA (H)	VIS	MDA (H)	VIS	NM	5	4	3
A				860 (500)	1500	1000 (640)	1500	ALT	1620	1300	980
B	780 (420)	1500	416	900 (540)	1600	1040 (680)	1600	(HGT)	(1261)	(941)	(621)
C				-	-	-	-				
D				-	-	-	-				

Observations / Remarks : (1) MVL CAT C et D interdites / Circling CAT C and D prohibited.

NDB - THR	3.5 NM	70 kt	85 kt	100 kt	115 kt	130 kt	160 kt	185 kt
		3 min 00	2 min 28	2 min 06	1 min 50	1 min 37	1 min 19	1 min 08
VSP (ft/min)		375	455	530	610	690	850	985