

APPROCHE AUX INSTRUMENTS

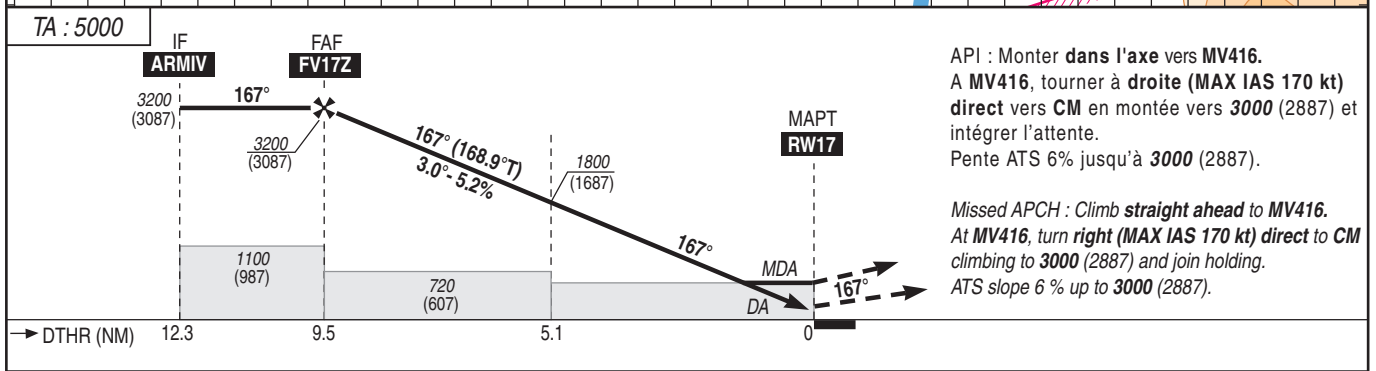
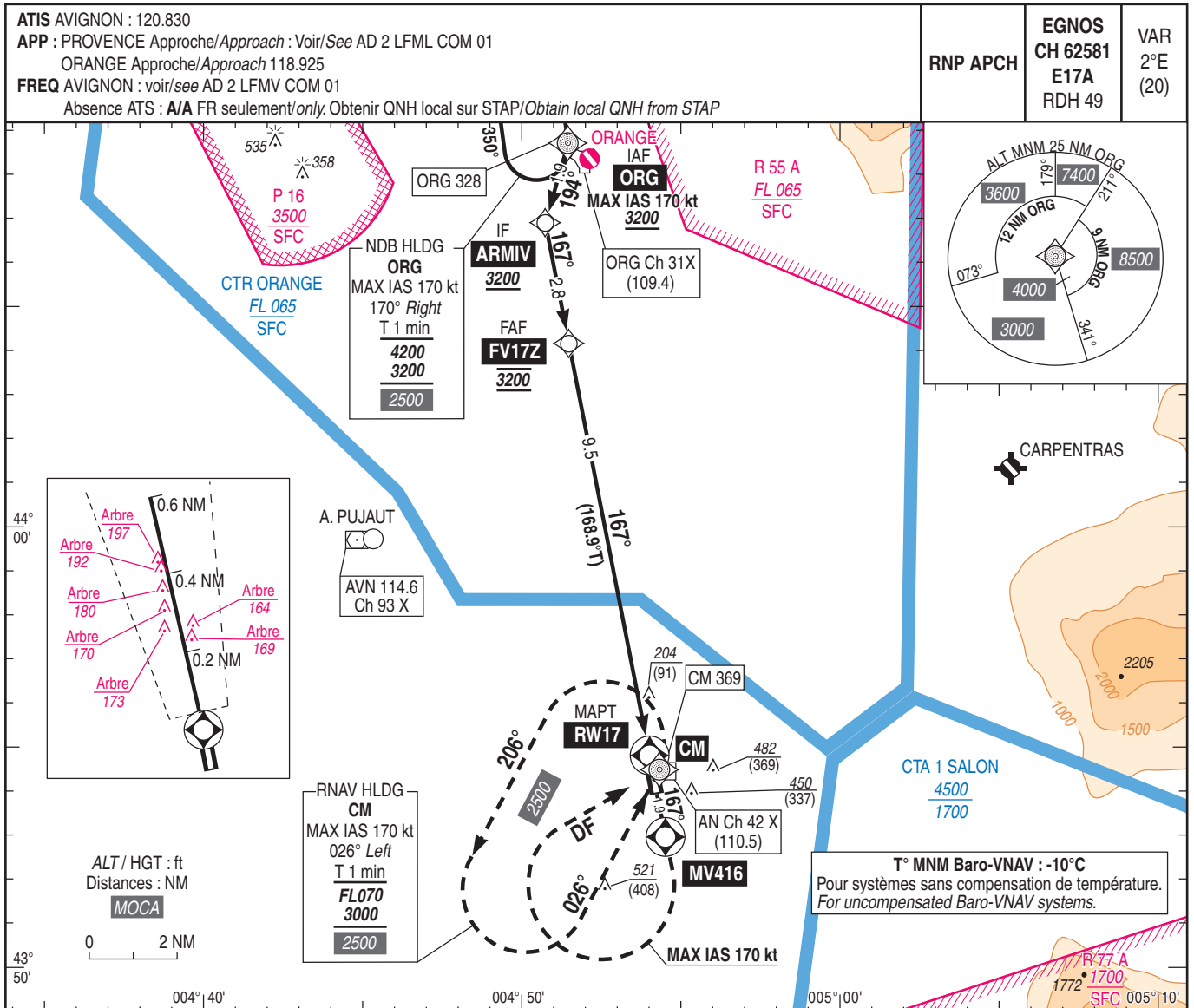
AVIGNON CAUMONT

Instrument approach

CAT A B C

ALT AD : 124, DTHR : 113 (4 hPa)

RNP Z RWY 17



MNM AD : distances verticales en pieds, RVR et VIS en mètres / vertical distances in feet, RVR and VIS in metres. REF HGT : ALT DTHR

CAT	LPV			LNAV/VNAV			LNAV			MVL / Circling ⁽¹⁾		DIST DTHR 17				
	DA (H)	RVR	OCH	DA (H)	RVR	OCH	MDA (H)	RVR	OCH	MDA (H)	VIS	NM	9	8	7	6
A	420 (300)	1400	300	510 (400)	1500	397	560 (450)	1500	447	820 (700)	1500	ALT (HGT)	3030 (2917)	2710 (2597)	2390 (2277)	2070 (1957)
B	430 (310)	1400	310	520 (410)	1500	407	580 (470)	1500	463	820 (700)	1600		5	4	3	2
C	440 (320)	1400	320	540 (430)	2000	427	600 (490)	2300	487	920 (800)	2400		1750 (1637)	1440 (1327)	1120 (1007)	800 (687)

Observations/Remarks : (1) Absence ATS : MVL interdite à l'Ouest de la piste / Circling prohibited West of RWY.
Panne de guidage GNSS lors de l'approche / Loss of GNSS guidance during approach : voir / see ENR 1.5.

FAF - RW17	9.5 NM	70 kt 8 min 09	85 kt 6 min 42	100 kt 5 min 42	115 kt 4 min 57	130 kt 4 min 23	145 kt 3 min 56	160 kt 3 min 34
VSP (ft/min)		370	450	530	610	690	770	850