

APPROCHE AUX INSTRUMENTS

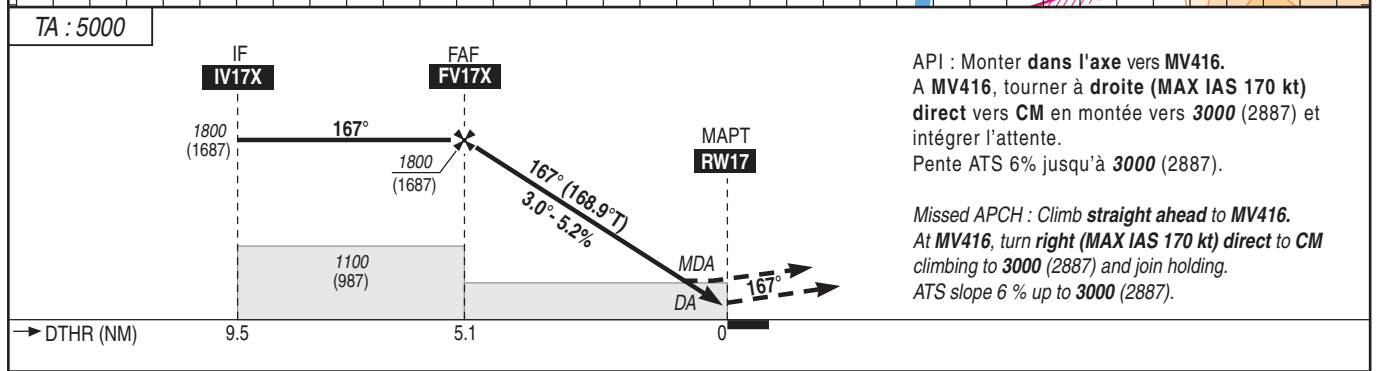
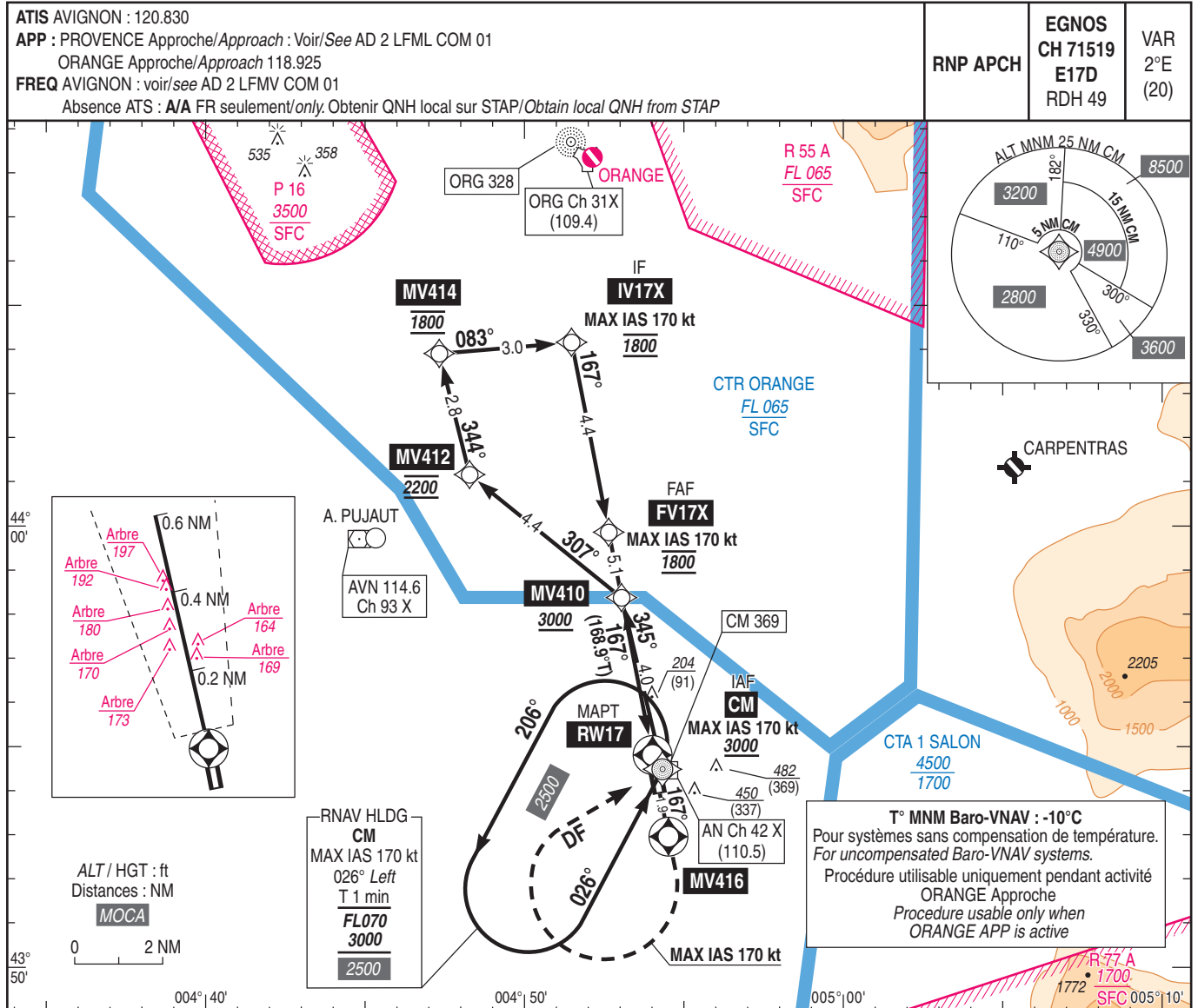
AVIGNON CAUMONT

Instrument approach

CAT A B C

ALT AD : 124, DTHR : 113 (4 hPa)

RNP X RWY 17



API : Monter dans l'axe vers MV416.
A MV416, tourner à droite (MAX IAS 170 kt) direct vers CM en montée vers 3000 (2887) et intégrer l'attente.
Pente ATS 6% jusqu'à 3000 (2887).

Missed APCH : Climb straight ahead to MV416.
At MV416, turn right (MAX IAS 170 kt) direct to CM climbing to 3000 (2887) and join holding.
ATS slope 6 % up to 3000 (2887).

MNM AD : distances verticales en pieds, RVR et VIS en mètres / vertical distances in feet, RVR and VIS in metres. REF HGT : ALT DTHR

| CAT | LPV | | | LNAV/VNAV | | | LNAV | | | MVL / Circling ⁽¹⁾ | | DIST DTHR 17 NM | 5 | 4 | 3 | 2 |
|-----|-----------|------|-----|-----------|------|-----|-----------|------|-----|-------------------------------|------|--------------------|--------|--------|--------|-------|
| | DA (H) | RVR | OCH | DA (H) | RVR | OCH | MDA (H) | RVR | OCH | MDA (H) | VIS | | | | | |
| A | 420 (300) | 1400 | 300 | 510 (400) | 1500 | 397 | 560 (450) | 1500 | 447 | 820 (700) | 1500 | ALT | 1750 | 1440 | 1120 | 800 |
| B | 430 (310) | 1400 | 310 | 520 (410) | 1500 | 407 | 580 (470) | 1500 | 463 | 820 (700) | 1600 | (HGT) | (1637) | (1327) | (1007) | (687) |
| C | 440 (320) | 1400 | 320 | 540 (430) | 2000 | 427 | 600 (490) | 2300 | 487 | 920 (800) | 2400 | | | | | |

Observations/Remarks : (1) absence ATS : MVL interdite à l'Ouest de la piste / Circling prohibited West of RWY.
Panne de guidage GNSS lors de l'approche / Loss of GNSS guidance during approach : voir / see ENR 1.5.

| | FAF - RW17 | 5.1 NM | 70 kt | 85 kt | 100 kt | 115 kt | 130 kt | 145 kt | 160 kt |
|--------------|------------|--------|----------|----------|----------|----------|----------|----------|----------|
| VSP (ft/min) | | | 4 min 22 | 3 min 36 | 3 min 04 | 2 min 40 | 2 min 21 | 2 min 07 | 1 min 55 |
| | | | 370 | 450 | 530 | 610 | 690 | 770 | 850 |