

APPROCHE AUX INSTRUMENTS

MONTPELLIER MEDITERRANEE

Instrument approach

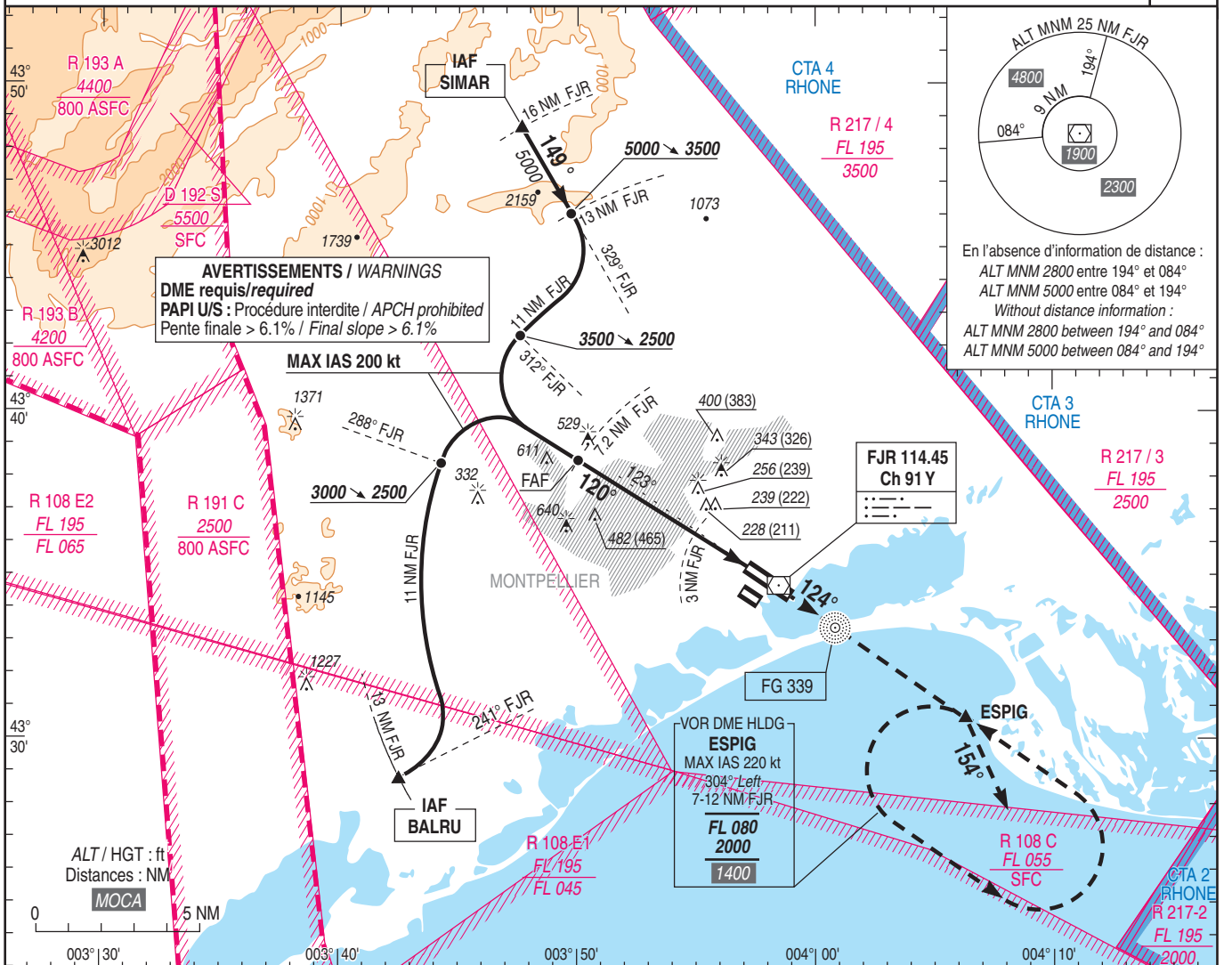
CAT A B C D

ALT AD : 17 (1 hPa), THR : 17

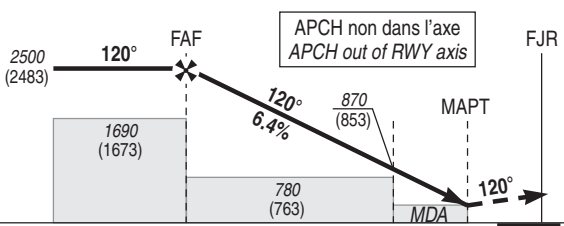
VOR Y RWY 12L

FREQ : voir / see AD 2 LFMT COM 01

VAR
2°E
(20)



TA : 5000



API : Monter sur RDL 300° FJR (RM 120°). A FJR, monter RDL 124° FJR (RM 124°) vers 2000 (1983) pour intégrer l'attente **ESPIG**. Monter à 1000 (983) avant d'accélérer en palier.

Missed APCH : Climb RDL 300° FJR (MAG 120°). At FJR, climb RDL 124° FJR (MAG 124°) up to 2000 (1983) to join **ESPIG** holding. Climb up to 1000 (983) prior to level acceleration.

→ DME FJR (NM)	7.2	3.0	1.5
→ THR (NM)	6.3	2.1	0.6

MNM AD : distances verticales en pieds, RVR et VIS en mètres / vertical distances in feet, RVR and VIS in metres. REF HGT : ALT AD

CAT	VOR Y			MVL / Circling ⁽¹⁾		DME FJR	7	6	5	4	3
	MDA (H)	RVR	OCH	MDA (H)	VIS						
A	480 (460)	1500	457	540 (520)	1500	NM	2420	2030	1640	1250	870
B	480 (460)	1500		640 (630)	1600	ALT	(2403)	(2013)	(1623)	(1233)	(853)
C	620 (600)	2400		800 (780)	2400						
D	720 (700)	2400		880 (860)	3600						

Observations / Remarks : (1) MVL interdites au Sud-Ouest des pistes. (1) Circling prohibited South-West of RWY.

	70 kt	85 kt	100 kt	115 kt	130 kt	160 kt	185 kt
VSP (ft/min)	450	550	650	750	840	1040	1200