

APPROCHE AUX INSTRUMENTS

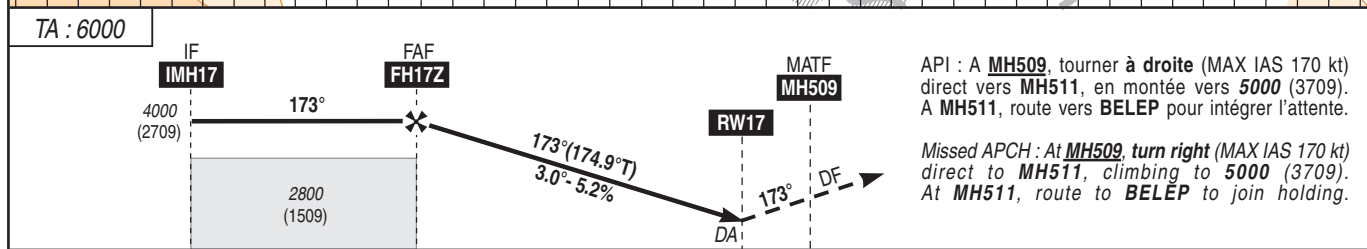
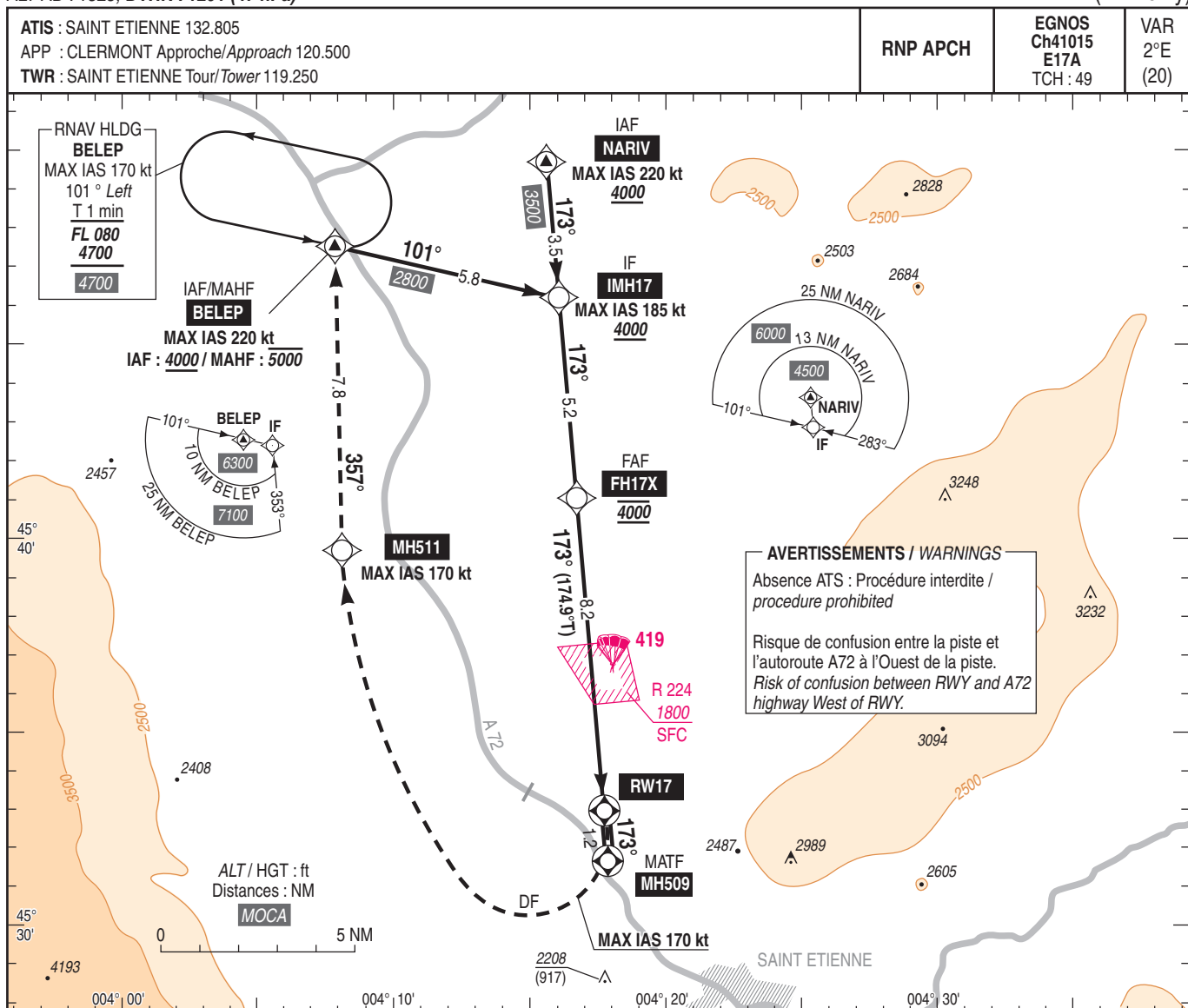
SAINT ETIENNE LOIRE

Instrument approach

CAT A B C

ALT AD : 1325, DTHR : 1291 (47 hPa)

RNP Z RWY 17 (LPV only)



TA : 6000
DTHR (NM) 13.4 8.2 0 1.2
MNM AD : distances verticales en pieds, RVR et VIS en mètres / vertical distances in feet, RVR and VIS in metres. REF HGT : ALT DTHR

CAT	LPV API 2.5%			LPV API 3.5%			LPV API 5%			MVL / Circling (1)	
	DA (H)	RVR	OCH	DA (H)	RVR	OCH	DA (H)	RVR	OCH	MDA (H)	VIS
A	1670 (380)	1000	374	1550 (260)		256	1500 (210)		207	2260 (970)	1500
B	1680 (390)	1100	384	1560 (270)	600	266	1510 (220)	550	217	2480 (1190)	1600
C	1690 (400)	1100	394	1570 (280)		276	1520 (230)		227	2660 (1370)	2400

Observations / Remarks : (1) - MVL interdites à l'Est de la piste / Circling prohibited East of RWY.
- MVL interdites de nuit si PAPI 35 U/S / Circling prohibited at night if PAPI 35 U/S.

	70 kt	85 kt	100 kt	115 kt	130 kt	160 kt
FH17Z - DTHR	8.2 NM	7 min 02	5 min 47	4 min 55	4 min 17	3 min 04
VSP (ft/min)	370	450	530	605	685	845