

APPROCHE AUX INSTRUMENTS

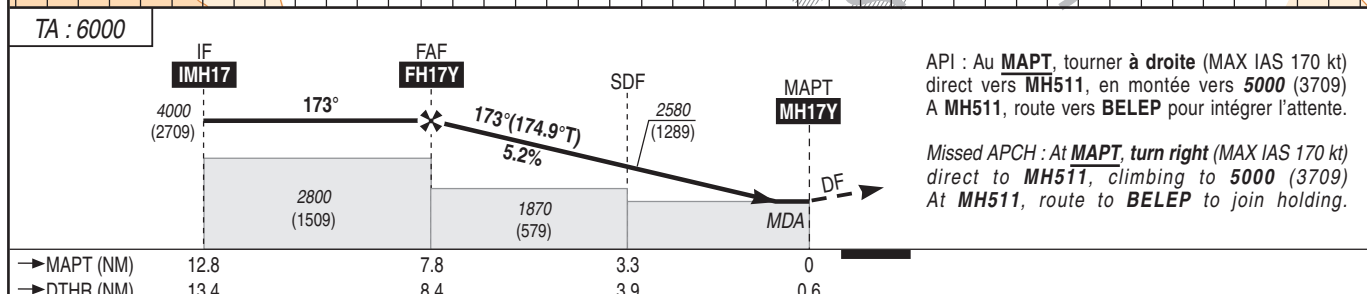
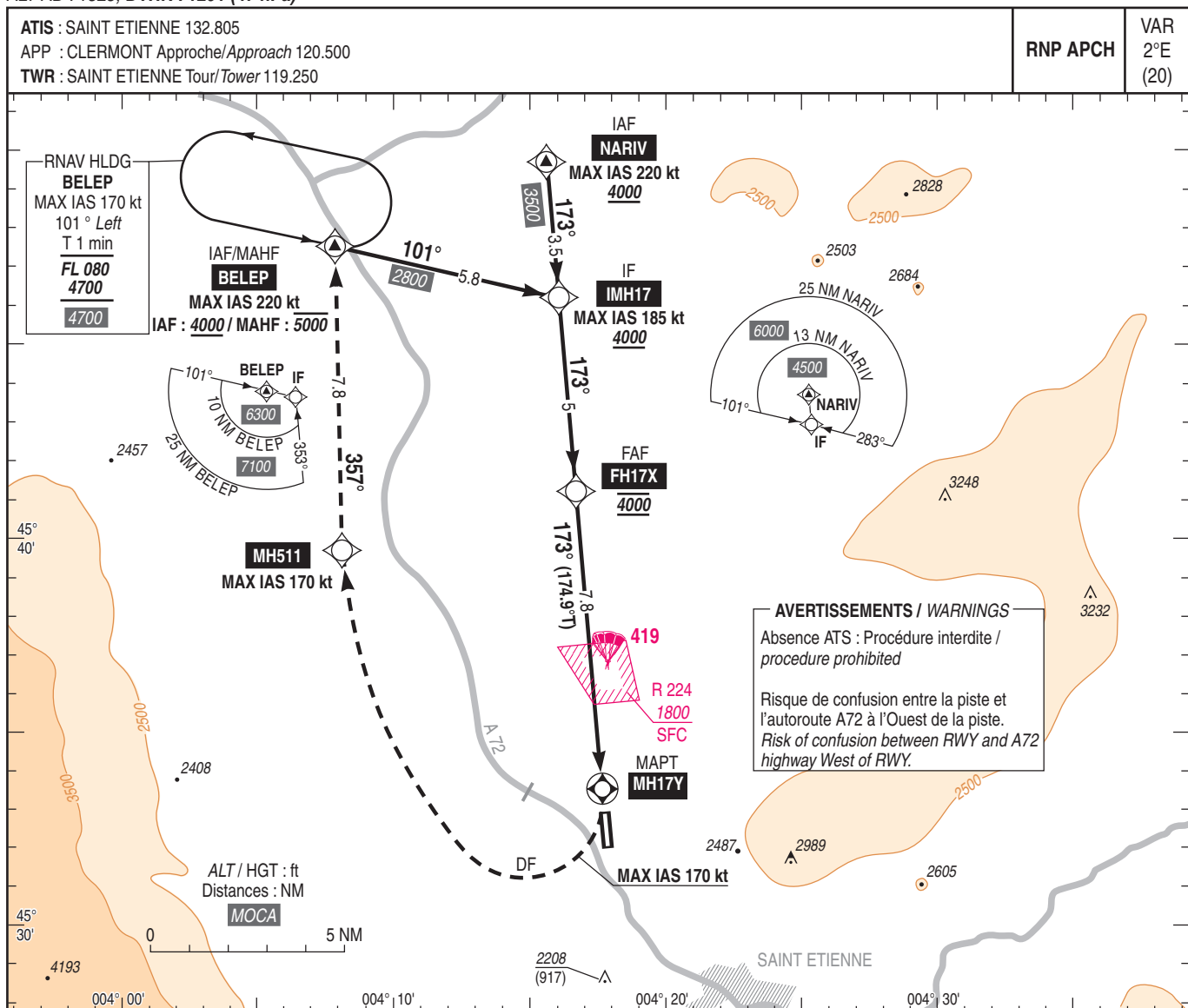
SAINT ETIENNE LOIRE

Instrument approach

CAT A B C

ALT AD : 1325, DTHR : 1291 (47 hPa)

RNP Y RWY 17



MNM AD : distances verticales en pieds, RVR et VIS en mètres / vertical distances in feet, RVR and VIS in metres. REF HGT : ALT DTHR

CAT	LNAV			MVL / Circling (1)		DIST MH17Y
	MDA (H)	RVR	OCH	MDA (H)	VIS	
A				2260 (970)	1500	NM 7 6 5 4 3 2 1 ALT 3760 3440 3120 2800 2490 2170 1850 (HGT) (2469) (2149) (1829) (1509) (1199) (879) (559)
B	1690 (400)	1100	357	2480 (1190)	1600	
C				2660 (1370)	2400	

Observations / Remarks : (1) - MVL interdites à l'Est de la piste / Circling prohibited East of RWY.
- MVL interdites de nuit si PAPI 35 U/S / Circling prohibited at night if PAPI 35 U/S.

	70 kt	85 kt	100 kt	115 kt	130 kt	160 kt
FH17Y - MH17Y	7.8 NM	6 min 41	5 min 30	4 min 41	4 min 04	3 min 36
VSP (ft/min)	370	450	530	605	685	845