

APPROCHE AUX INSTRUMENTS

SAINT ETIENNE LOIRE

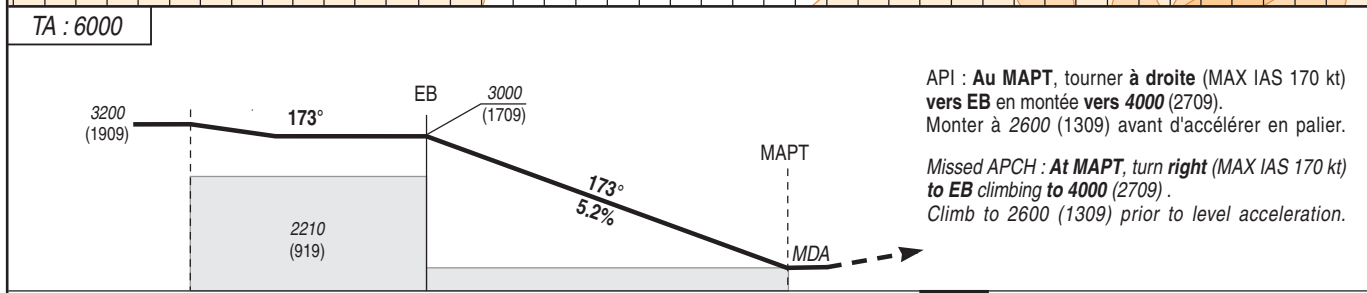
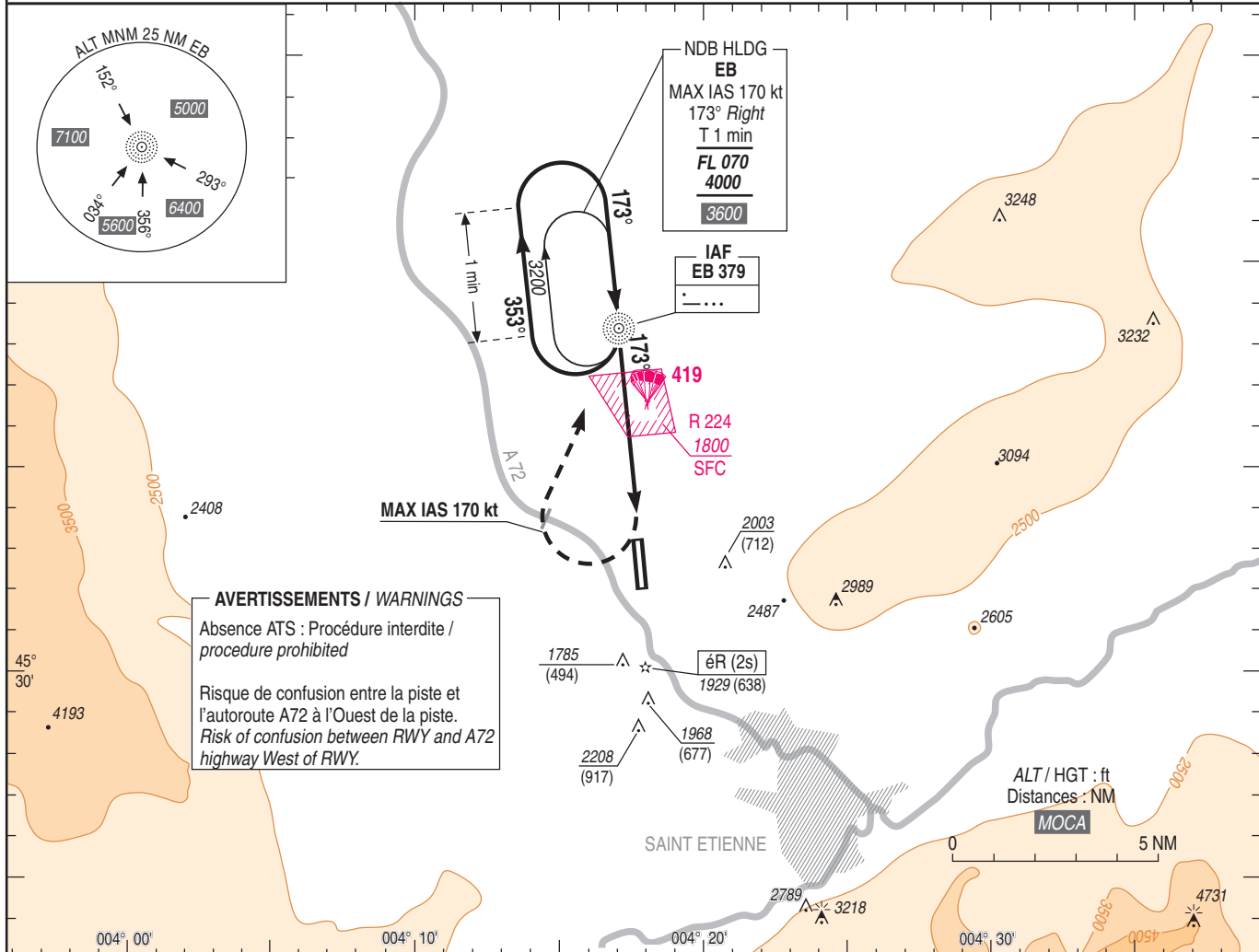
Instrument approach

CAT A B C

NDB RWY 17

ALT AD : 1325, DTHR : 1291 (47 hPa)

<p>ATIS : SAINT ETIENNE 132.805 APP : CLERMONT Approche/Approach 120.500 TWR : SAINT ETIENNE Tour/Tower 119.250</p>	<p>VAR 2°E (20)</p>
---	-----------------------------



API : Au MAPT, tourner à droite (MAX IAS 170 kt) vers EB en montée vers 4000 (2709). Monter à 2600 (1309) avant d'accélérer en palier.
Missed APCH : At MAPT, turn right (MAX IAS 170 kt) to EB climbing to 4000 (2709). Climb to 2600 (1309) prior to level acceleration.

MNM AD : distances verticales en pieds, RVR et VIS en mètres / vertical distances in feet, RVR and VIS in metres. REF HGT : ALT DTHR

CAT	NDB			MVL / Circling (1)	
	MDA (H)	RVR	OCH	MDA (H)	VIS
A		1500		2260 (970)	1500
B	2030 (740)	1500	739	2480 (1190)	1600
C		2400		2660 (1370)	2400

Observations / Remarks : (1) - MVL interdites à l'Est de la piste / Circling prohibited East of RWY.
- MVL interdites de nuit si PAPI 35 U/S / Circling prohibited at night if PAPI 35 U/S.

NDB - MAPT	4 NM	70 kt 3 min 26	85 kt 2 min 49	100 kt 2 min 24	115 kt 2 min 05	130 kt 1 min 51	145 kt 1 min 39	160 kt 1 min 30
VSP (ft/min)		370	450	530	605	685	765	845