

**APPROCHE AUX INSTRUMENTS**

LYON BRON

Instrument approach

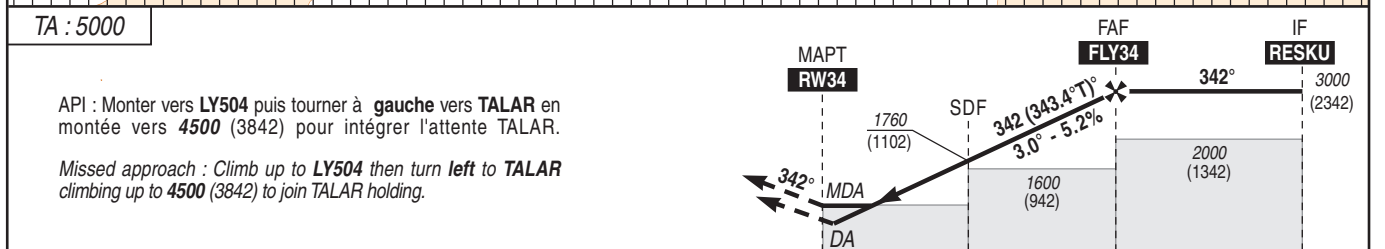
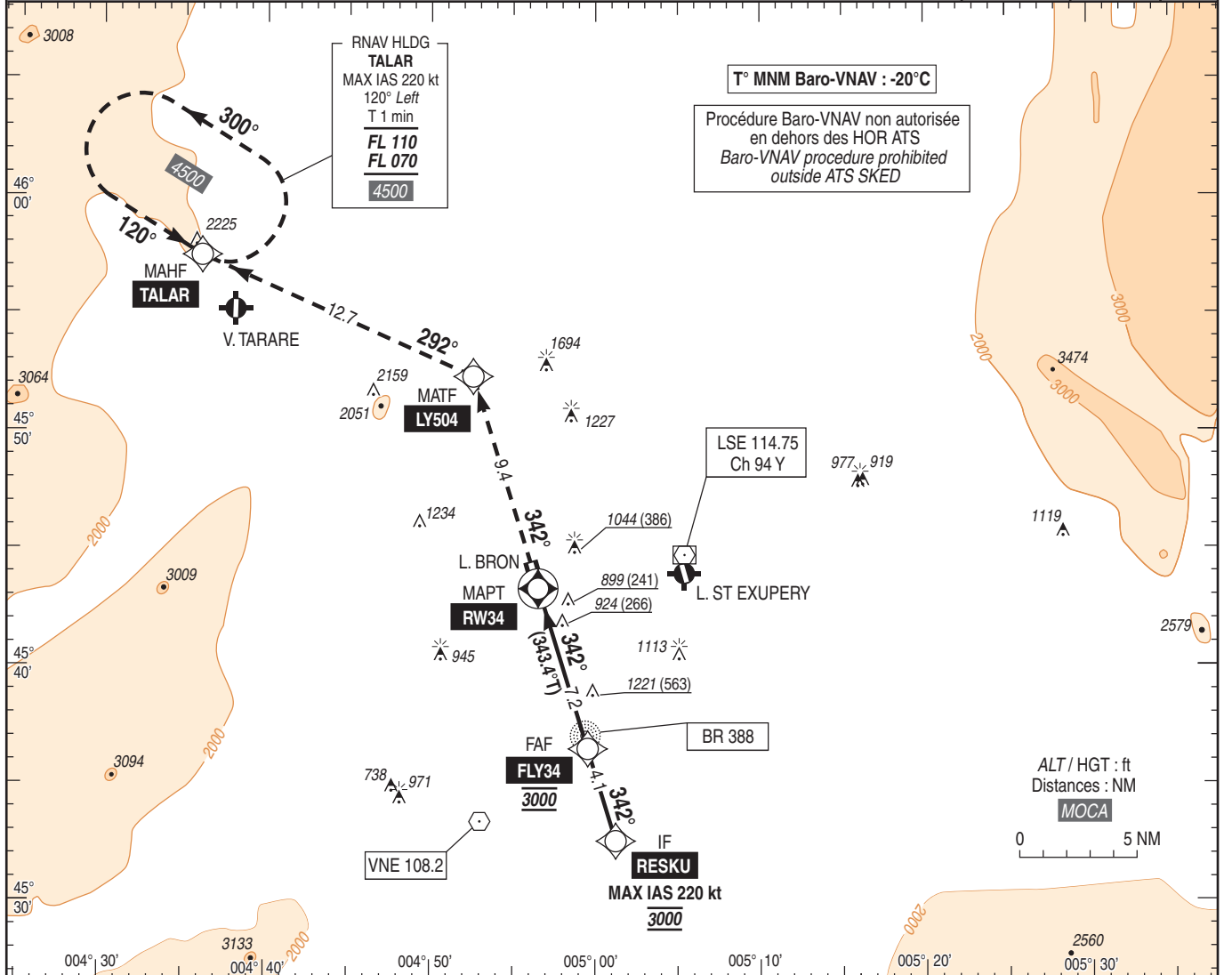
CAT A B C

ALT AD : 659, DTHR : 658 (24 hPa)

FNA RNP RWY 34

**ATIS BRON 128.130**  
**APP : LYON Approche/Approach 136.075 - 133.150 Secteur Ouest/West Sector (I) - 131.315 - 125.430 Secteur Est/East Sector (I)**  
 - 120.230(L) - 340.600  
**TWR : BRON Tour/Tower 118.100**  
**AFIS : BRON Information 118.100**  
 Absence ATS : A/A FR uniquement / only. Obtenir/Obtain QNH auprès de/from LYON APP.

<b>RNP APCH</b>	<b>EGNOS</b> Ch 61874 <b>E34A</b> RDH : 49	<b>VAR</b> 2°E (20)
-----------------	---	---------------------------



DTHR ← (NM)

MNM AD : distances verticales en pieds, RVR et VIS en mètres / vertical distances in feet, RVR and VIS in metres. REF HGT : ALT DTHR

CAT	LPV			LNAV/VNAV			LNAV			MVL/Circling (1)		MVL/Circling (1) Absence ATS		DIST RWY34 ALT (HGT)					
	DA (H)	RVR	OCH	DA (H)	RVR	OCH	MDA (H)	RVR	OCH	MDA (H)	VIS	MDA (H)	VIS		7	6	5	4	3
A	860 (200)		181	970 (310)	1000	308				1340 (690)	1500	1350 (700)	1500	2935	2620	2300	1980	1660	1345
B	860 (200)	750	194	980 (320)	1000	320	1180 (520)	1500	513	1340 (690)	1600	1350 (700)	1600	(2277)	(1962)	(1642)	(1322)	(1002)	(687)
C	870 (210)		202	990 (330)	1100	328				1600 (950)	2400	1610 (960)	2400						

Observations /Remarks : (1) Circuit RWY 34 à droite : 1500 (800), Circuit AD RWY 16 : 1500 (800) / Right hand circuit RWY 34 : 1500 (800). AD circuit RWY 16 : 1500 (800). MVL RWY 16 interdite si PAPI U/S / Circling RWY 16 prohibited if PAPI U/S.

FAF - DTHR	7.2 NM	70 kt 6 min 10	85 kt 5 min 05	100 kt 4 min 19	115 kt 3 min 45	130 kt 3 min 19	160 kt 2 min 42
VSP (ft/min)		370	450	525	605	685	845