

APPROCHE AUX INSTRUMENTS

GRENOBLE ALPES ISERE

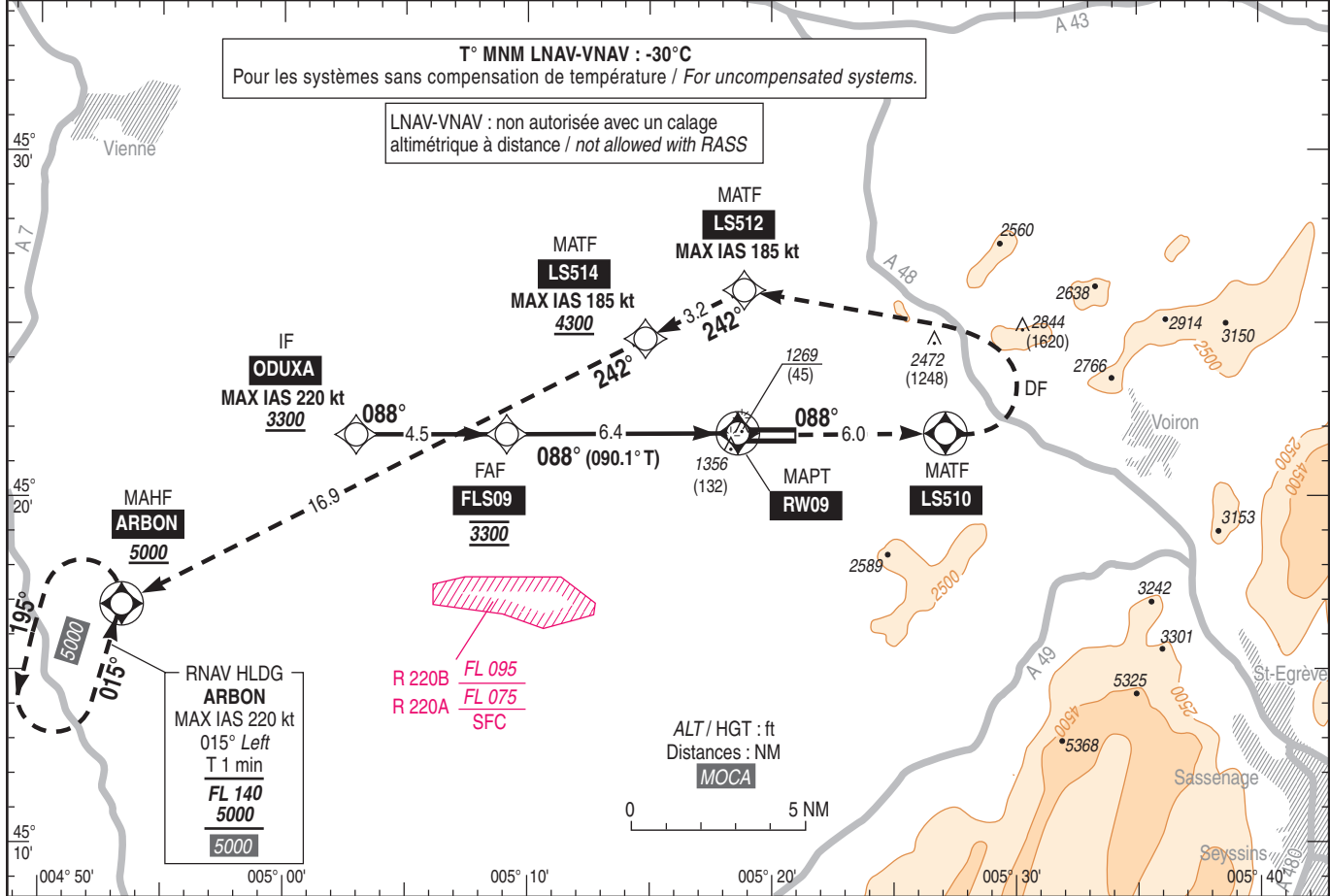
Instrument approach

CAT A B C D

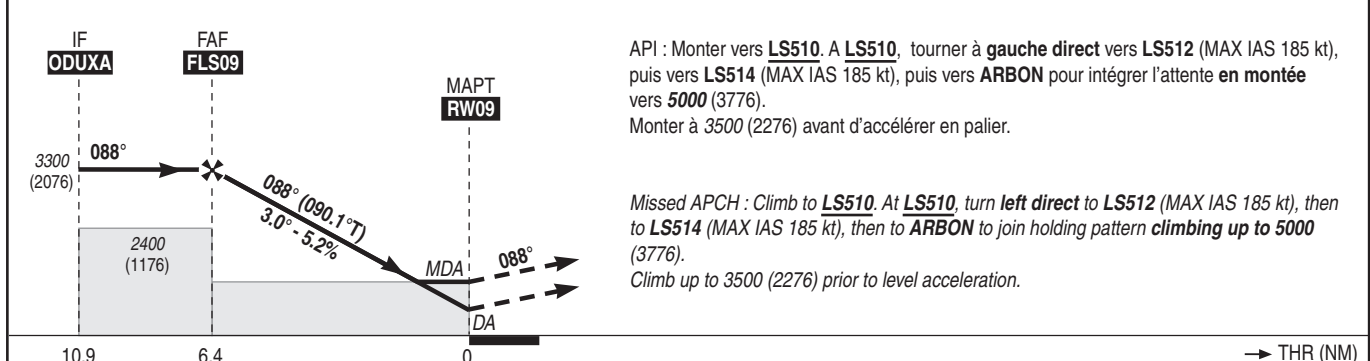
ALT AD : 1302, THR : 1224 (44 hPa)

FNA RNP RWY 09

ATIS GRENOBLE : 133.855 APP : LYON Approche/Approach 136.075 - 133.150(I)(1) - 131.315 - 125.430(I)(2) TWR : GRENOBLE Tour/Tower 119.300 Absence ATS : A/A FR uniquement. Obtenir/Obtain. QNH auprès de/ from LYON APP.	(1) Secteur Ouest / West area (2) Secteur Est / East area	RNP APCH	EGNOS Ch 70894 E09A RDH : 52	VAR 2°E (20)
--	--	-----------------	--	--------------------



TA : 5000



MNM AD : distances verticales en pieds, RVR et VIS en mètres / vertical distances in feet, RVR and VIS in metres. REF HGT : ALT THR

CAT	LPV Pente API / Missed APCH slope : 2.5%			LPV Pente API / Missed APCH slope : 3.4%			LNAV/VNAV Pente API / Missed APCH slope : 2.5%			LNAV/VNAV Pente API / Missed APCH slope : 3.5%			LNAV			MVL / Circling (1)		MVL/Circling absence ATS (1)		DIST RW09				
	DA (H)	OCH	RVR	DA (H)	OCH	RVR	DA (H)	OCH	RVR	DA (H)	OCH	RVR	MDA (H)	OCH	RVR	MDA (H)	VIS	MDA (H)	VIS	NM	ALT (HGT)	6	5	4
A	1690 (470)	466	1500	1430 (200)	180	750	1760 (530)	527	1500	1490 (270)	262	900	1870 (650)	645	1500	2140 (920)	1500	2260 (1040)	1500			3180 (1956)	2870 (1646)	2550 (1326)
B	1710 (480)	478	1500	1430 (200)	193	750	1770 (540)	539	1500	1500 (280)	275	900	1890 (670)	661	1500	2370 (1150)	1600	2490 (1270)	1600					
C	1720 (490)	487	1800	1430 (210)	201	750	1790 (560)	559	2100	1520 (300)	291	900	1910 (690)	685	2400	3040 (1820)	2400	3160 (1940)	2400			2230 (1006)	1910 (686)	1590 (366)
D	1730 (500)	497	1800	1440 (220)	211	800	1810 (590)	586	2300	1550 (322)	322	1100	1930 (710)	704	2400	3040 (1820)	3600	3160 (1940)	3600					

Observations/Remarks : Panne de guidage GNSS durant l'approche / Loss of GNSS guidance during approach : voir/see AIP ENR 1.5
 (1) MVL CAT A et B interdites au Nord de l'AD. RWY 27 : PAPI obligatoire de nuit / Circling CAT A and B prohibited North of AD. RWY 27 : PAPI mandatory by night.

FAF - RW09	6.4 NM	70 kt 5 min 27	85 kt 4 min 30	100 kt 3 min 49	115 kt 3 min 19	130 kt 2 min 56	160 kt 2 min 23	185 kt 2 min 04
VSP (ft/min)		370	450	530	605	685	845	975