

APPROCHE AUX INSTRUMENTS

SAINT YAN

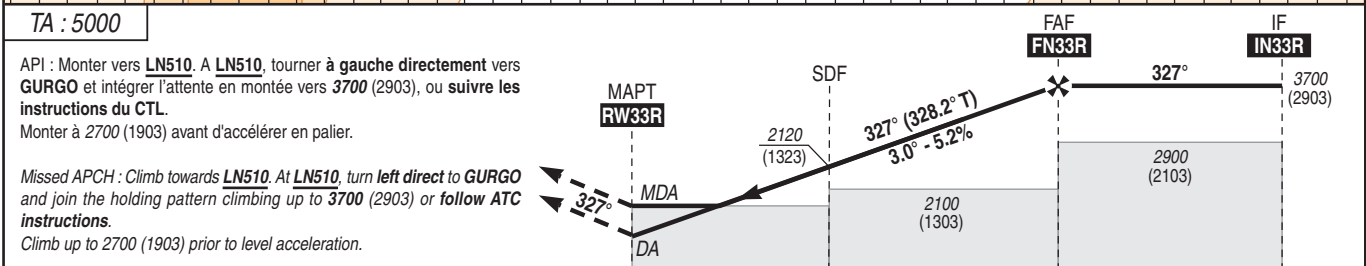
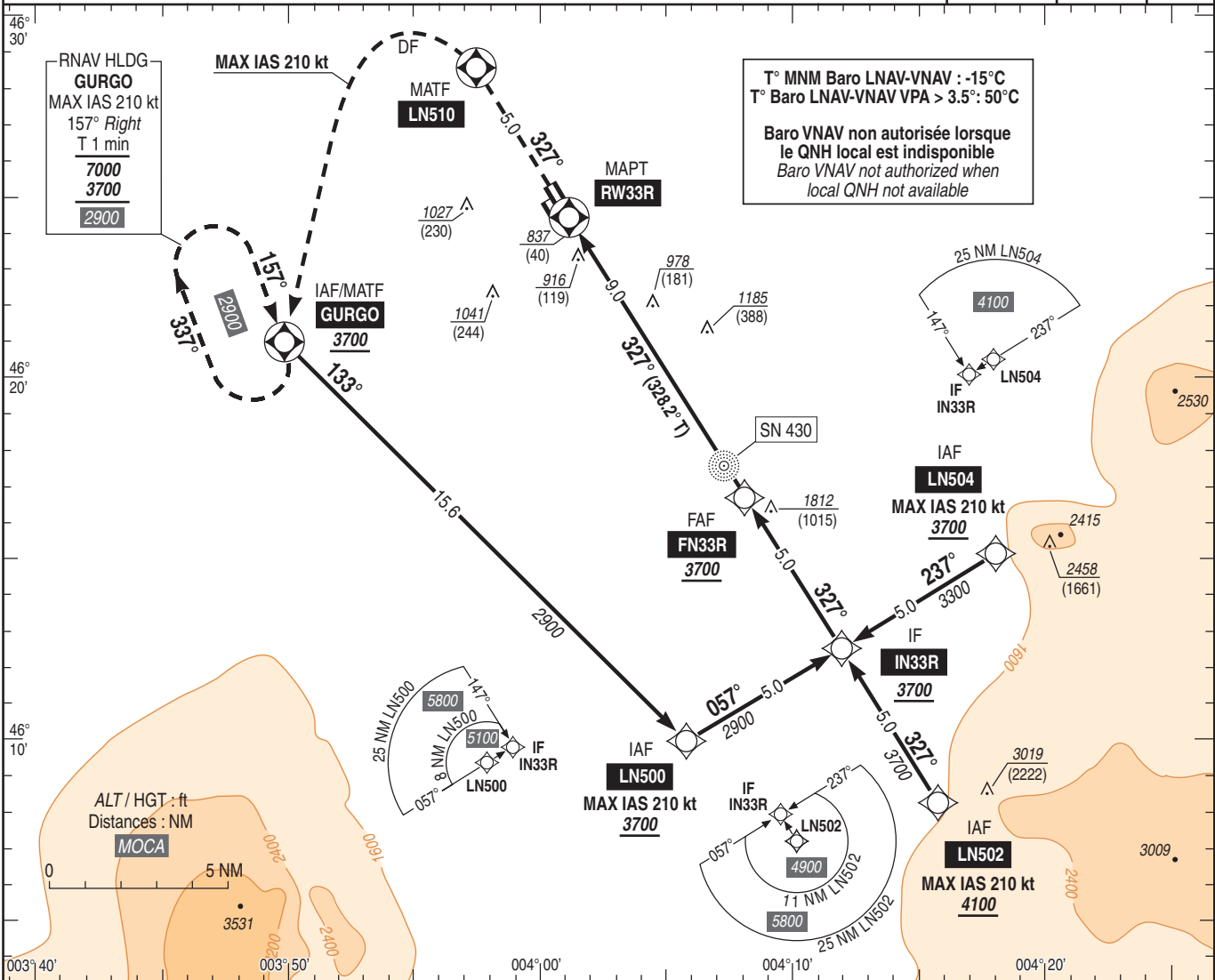
Instrument approach

CAT A B C

ALT AD : 797, THR : 797 (29 hPa)

RNP RWY 33R

ATIS SAINT YAN : 132.480 FREQ : voir / see AD 2 LFLN COM 01	RNP APCH	EGNOS Ch 98288 E33A RDH : 52	VAR 2°E (20)
--	----------	---------------------------------------	--------------------



THR ← (NM) 0 4.0 9.0 14.0

MNM AD : distances verticales en pieds, RVR et VIS en mètres / vertical distances in feet, RVR and VIS in metres. REF HGT : ALT THR

CAT	LPV			LNAV-VNAV			LNAV			MVL/Circling (1)		MVL / Circling absence ATS sans QNH local without local QNH HJ seulement/only (1)		DIST RW33R					
	DA (H)	RVR	OCH	DA (H)	RVR	OCH	MDA (H)	RVR	OCH	MDA (H)	VIS	MDA (H)	VIS	NM	ALT (HGT)	8	7	6	5
A				1050 (260)		253				1330 (530)	1500	1560 (770)	1500			3395 (2598)	3075 (2278)	2755 (1958)	2440 (1643)
B	1000 (200)	550	181	1060 (270)	750	263	1230 (430)	1300	427	1340 (540)	1600	1580 (780)	1600			2120 (1322)	1800 (1003)	1485 (688)	
C			191	1070 (280)		273				1580 (790)	2400	1820 (1020)	2400						

Observations / Remarks : (1) MVL interdites à l'Est des pistes. Circuit AD RWY 15 : main droite / Circling prohibited East of RWYs. Right hand circuit RWY 15.
 Perte de guidage GNSS lors de l'approche / Loss of GNSS guidance during approach : voir / see AIP ENR 1.5.

FAF - RW33R	9.0 NM	70 kt	85 kt	100 kt	115 kt	130 kt	145 kt	160 kt	185 kt
VSP (ft/min)		370	450	530	610	690	770	850	980
		7 min 41	6 min 19	5 min 23	4 min 40	4 min 08	3 min 42	3 min 22	2 min 54