

APPROCHE AUX INSTRUMENTS

SAINT YAN

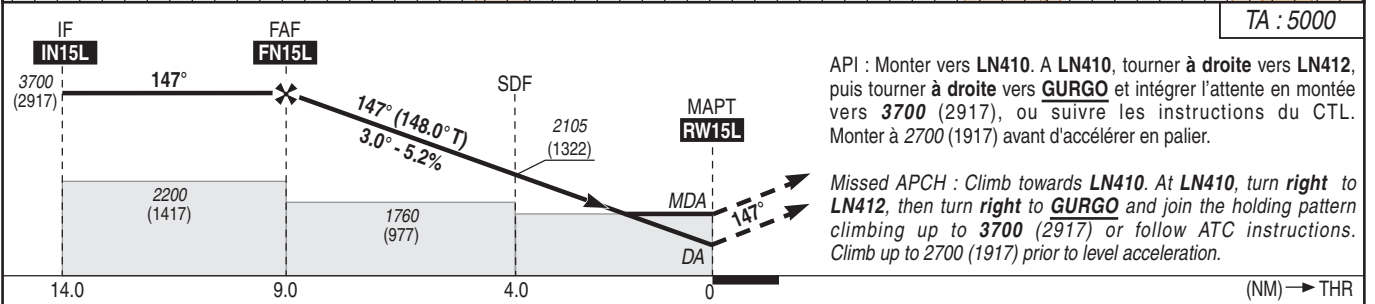
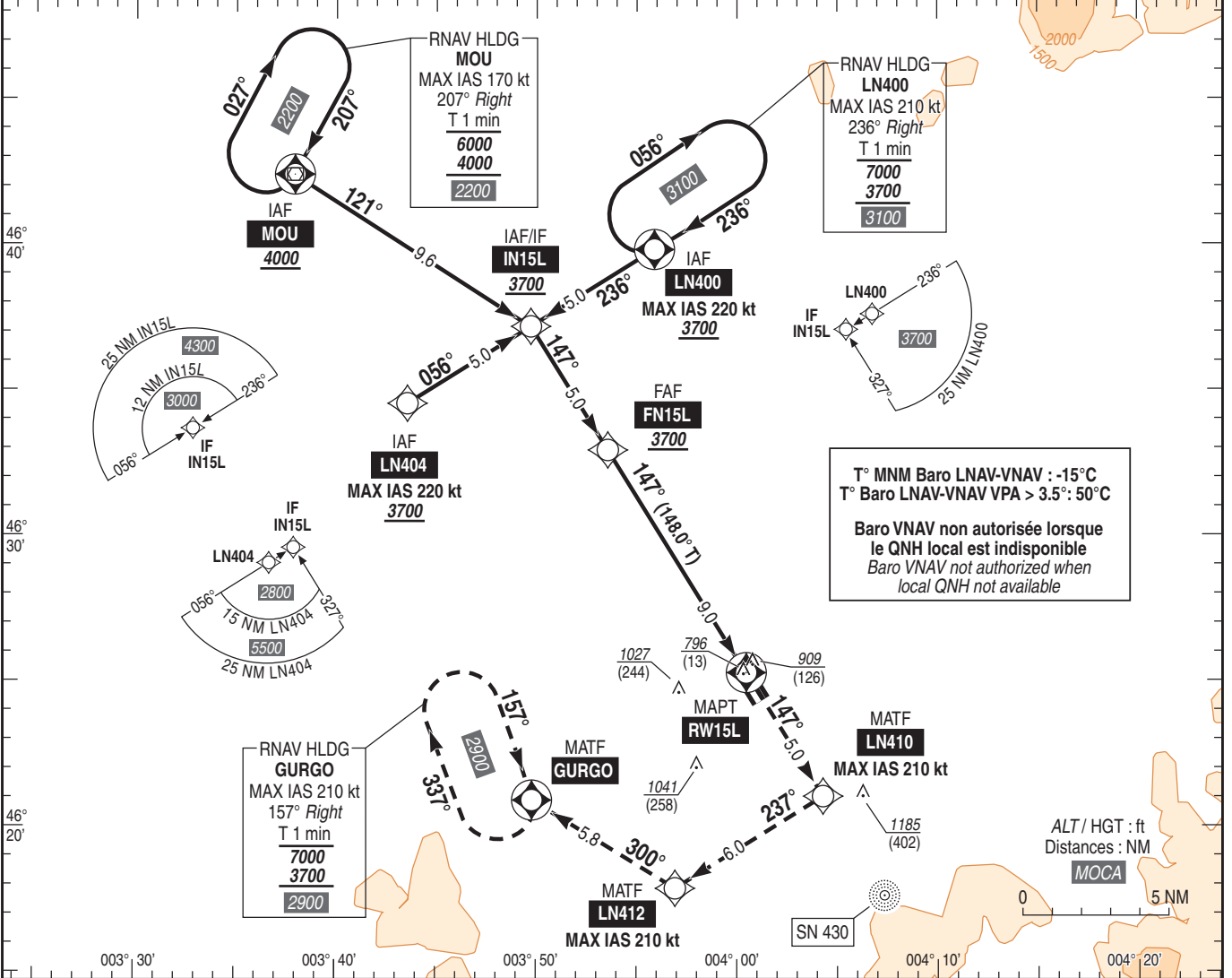
Instrument approach

CAT A B C

ALT AD : 797, THR : 783 (28 hPa)

RNP RWY 15L

ATIS SAINT YAN : 132.480 FREQ : voir / see AD 2 LFLN COM 01	RNP APCH	EGNOS Ch 73334 E15A RDH : 49	VAR 2°E (20)
--	----------	---------------------------------------	--------------------



MNM AD : distances verticales en pieds, RVR et VIS en mètres / vertical distances in feet, RVR and VIS in metres. REF HGT : ALT THR

CAT	LPV			LNAV-VNAV			LNAV			MVL/Circling (1)		DIST RW15L						
	DA (H)	RVR	OCH	DA (H)	RVR	OCH	MDA (H)	RVR	OCH	MDA (H)	VIS	MDA (H)	VIS	9 NM	8 NM	7 NM	6 NM	5 NM
A			144			257		1500		1330 (550)	1500	1560 (780)	1500	3700 (2917)	3380 (2597)	3060 (2277)	2740 (1957)	2425 (1642)
B	1090 (300)	1400	154	1090 (300)	1400	267	1160 (380)	1500	373	1340 (560)	1600	1580 (790)	1600	4	3	2		
C		164			277			1700		1580 (800)	2400	1820 (1040)	2400	(1322)	(1002)	(687)		

Observations / Remarks : (1) MVL interdites à l'Est des pistes. Circuit AD RWY 15 : main droite / Circling prohibited East of RWYs. Right hand circuit RWY 15. Perte de guidage GNSS lors de l'approche / Loss of GNSS guidance during approach : voir / see AIP ENR 1.5.

FAF - RW15L	9.0 NM	70 kt	85 kt	100 kt	115 kt	130 kt	145 kt	160 kt	185 kt
VSP (ft/min)		370	450	530	610	690	770	850	980