

**APPROCHE AUX INSTRUMENTS**

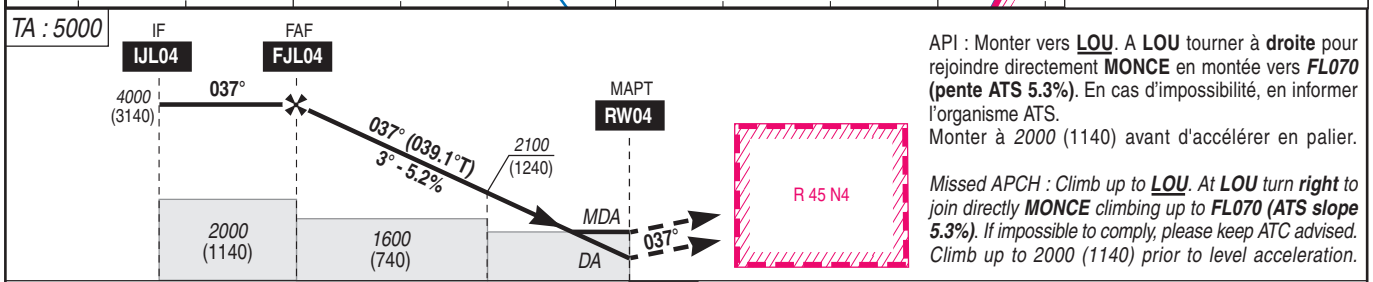
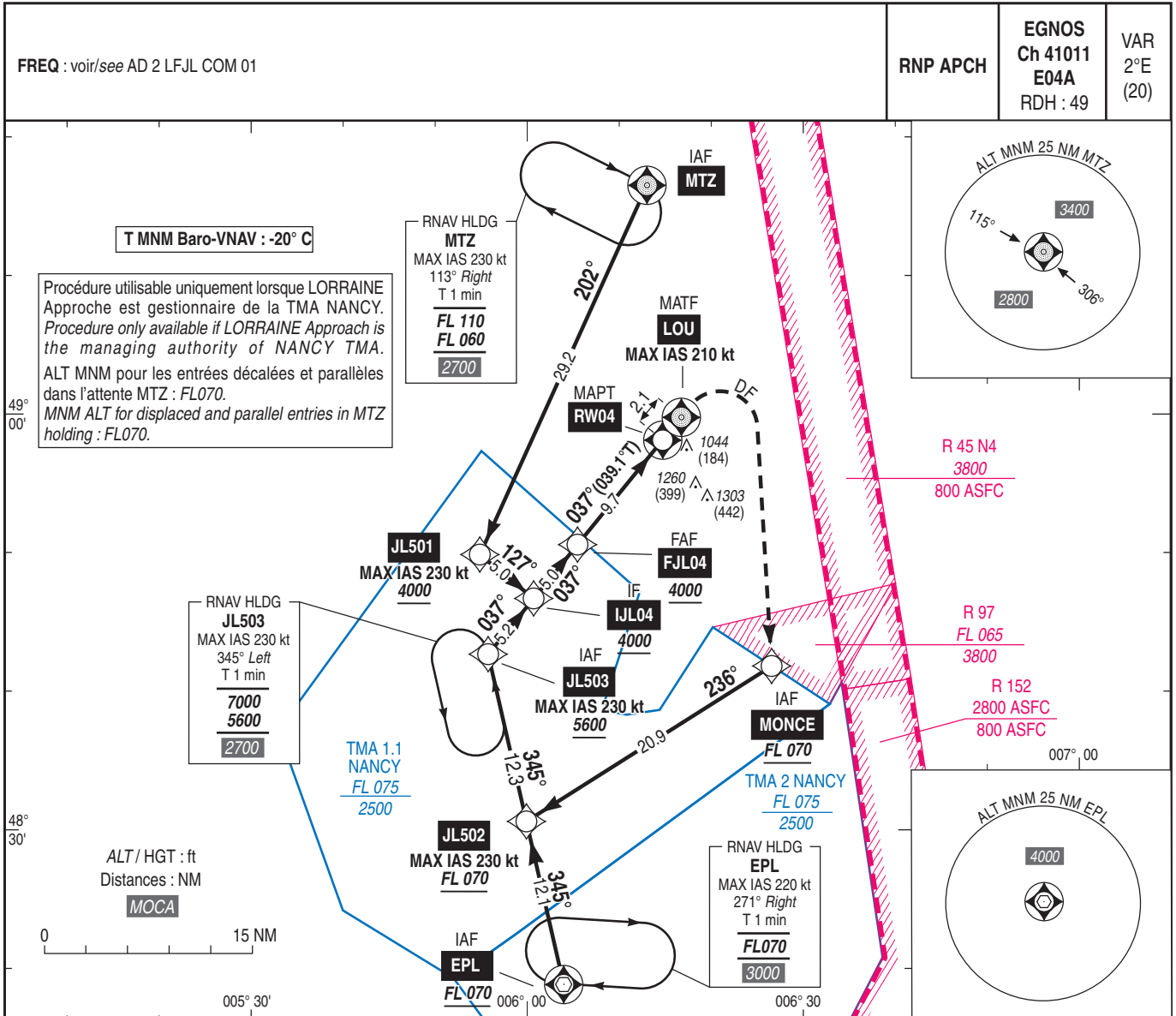
**METZ NANCY LORRAINE**

Instrument approach

CAT A B C D

ALT AD : 870, DTHR : 860 (31 hPa)

RNP RWY 04



API : Monter vers **LOU**. A **LOU** tourner à **droite** pour rejoindre directement **MONCE** en montée vers **FL070** (pente ATS 5.3%). En cas d'impossibilité, en informer l'organisme ATS.  
Monter à 2000 (1140) avant d'accélérer en palier.

Missed APCH : Climb up to **LOU**. At **LOU** turn **right** to join directly **MONCE** climbing up to **FL070** (ATS slope 5.3%). If impossible to comply, please keep ATC advised. Climb up to 2000 (1140) prior to level acceleration.

DTHR ← (NM) 14.7 9.7 3.7 0  
MNM AD : distances verticales en pieds, RVR et VIS en mètres / vertical distances in feet, RVR and VIS in metres. REF HGT : ALT DTHR

CAT	LPV			LNAV-VNAV			LNAV			MVL / Circling		DIST RW04 NM ALT (HGT)	9	8	7	6
	DA (H)	RVR	OCH	MDA (H)	RVR	OCH	MDA (H)	RVR	OCH	MDA (H)	VIS					
A	1160 (300)	1400	270	1160 (300)	1400	270	1250 (390)	1500	390	1410 (550)	1500	3780	3460	3140	2820	
B			280	1160 (300)	1400	280	1250 (390)	1500	390	1410 (550)	1600	(2920)	(2600)	(2280)	(1960)	
C			290	1160 (300)	1400	295	1260 (400)	1800	394	1660 (800)	2400	2510	2190	1870	1550	
D			300	1190 (330)	1500	322	1290 (430)	2000	430	1710 (850)	3600	(1640)	(1330)	(1010)	(690)	

Observations / Remarks : NIL.

FAF - MAPT	9.7 NM	70 kt 8 min 19	85 kt 6 min 51	100 kt 5 min 49	115 kt 5 min 04	130 kt 4 min 29	160 kt 3 min 38	185 kt 3 min 09
VSP (ft/min)		370	450	530	610	690	850	980