

**APPROCHE AUX INSTRUMENTS**

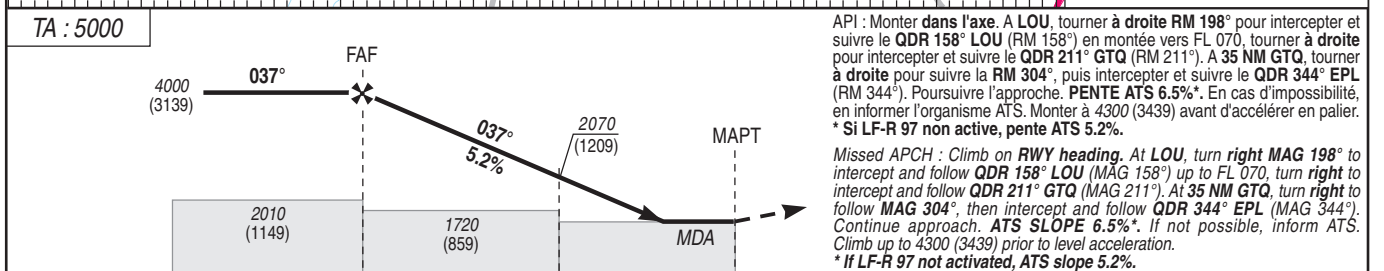
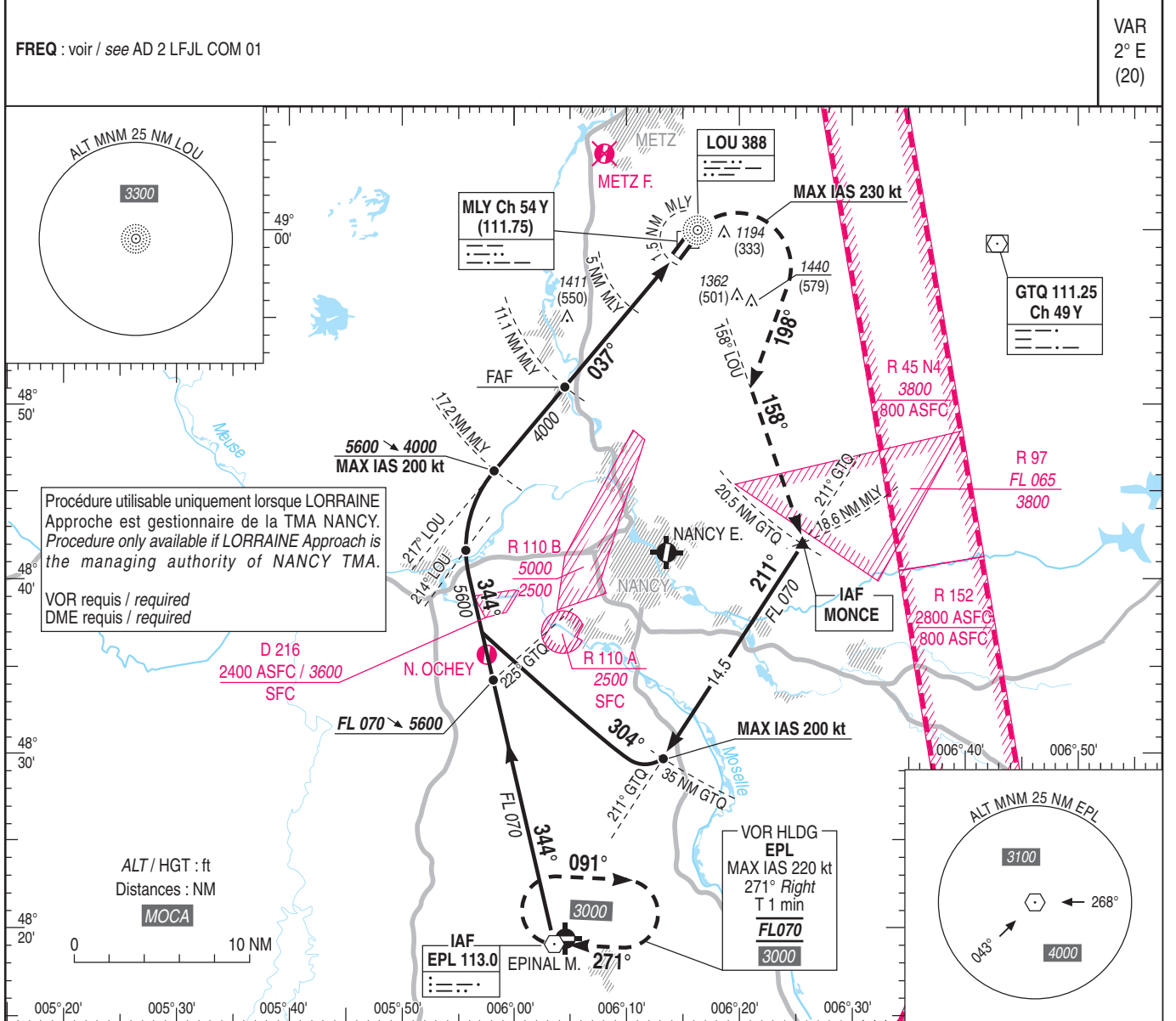
**METZ NANCY LORRAINE**

Instrument approach

CAT A B C D

ALT AD : 870, DTHR : 861 (31 hPa)

NDB RWY 04



MNM AD : distances verticales en pieds, RVR et VIS en mètres / vertical distances in feet, RVR and VIS in metres.      REF HGT : ALT DTHR

CAT	NDB + DME MLY			MVL / Circling		DME MLY (pour une pente de 5.24% / for a 5.24% slope)
	MDA (H)	RVR	OCH	MDA (H)	VIS	
A	1510 (650)	1500	645	1520 (660)	1500	NM 8 7 6 5 4 3 ALT 3025 2705 2385 2070 1750 1430 (HGT) (2164) (1844) (1524) (1209) (889) (569)
B		1500		1520 (660)	1600	
C		2400		1760 (900)	2400	
D		2400		1840 (980)	3600	

Observations / Remarks : NIL.

	70 kt	85 kt	100 kt	115 kt	130 kt	160 kt	185 kt
FAF - DTHR	9.7 NM	8 min 19	6 min 51	5 min 49	5 min 04	4 min 29	3 min 38
VSP (ft/min)	370	450	530	610	690	850	980