

APPROCHE AUX INSTRUMENTS

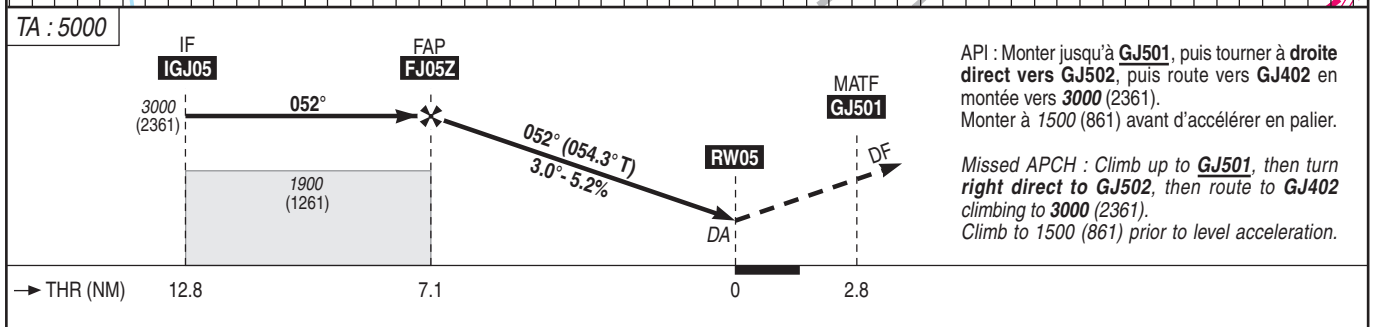
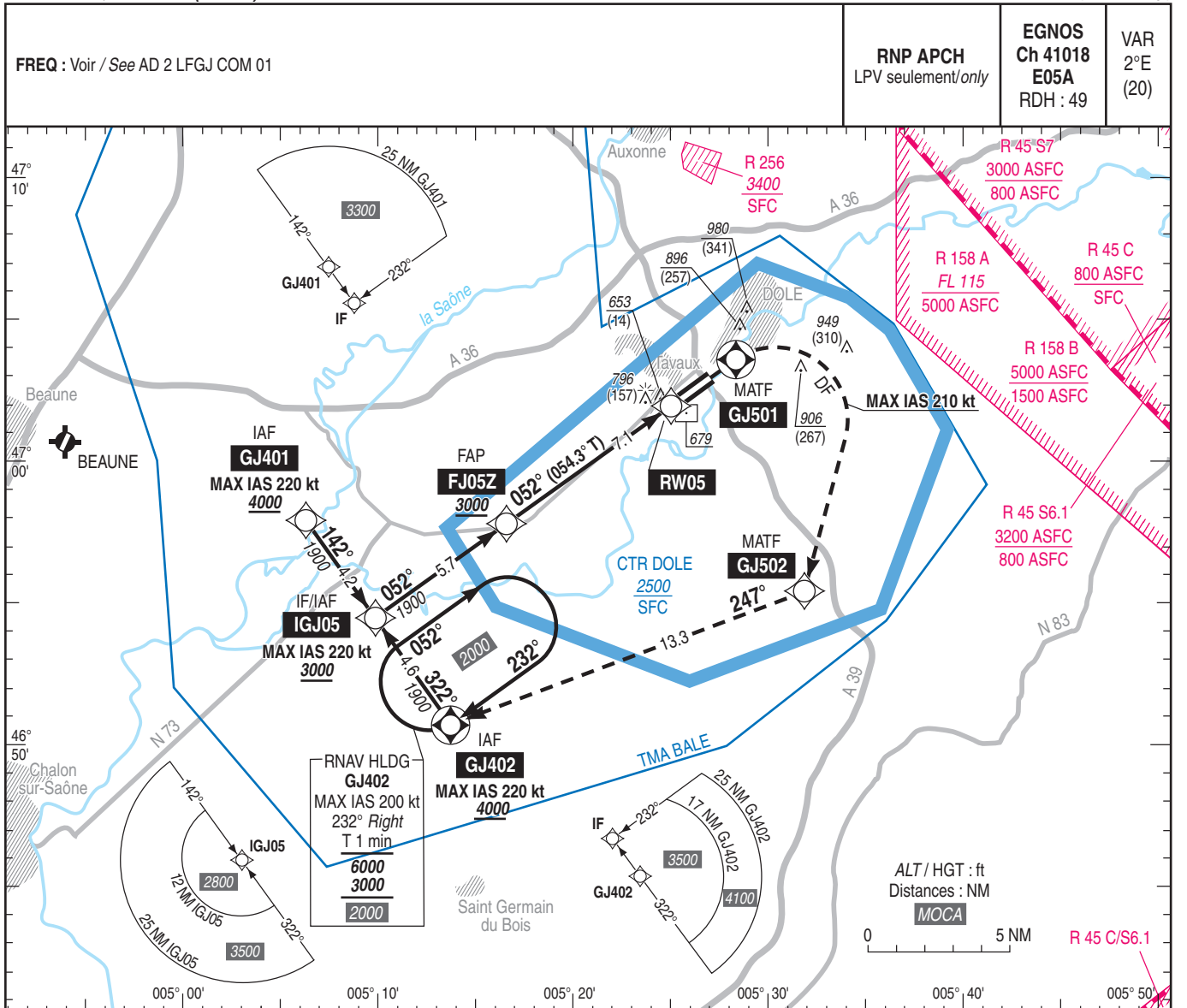
DOLE TAVAUX

Instrument approach

CAT A B C D

ALT AD : 645, THR : 639 (23 hPa)

RNP Z RWY 05 (LPV only)



API : Monter jusqu'à **GJ501**, puis tourner à **droite direct vers GJ502**, puis route vers **GJ402** en montée vers **3000** (2361).
Monter à **1500** (861) avant d'accélérer en palier.

Missed APCH : Climb up to **GJ501**, then turn **right direct to GJ502**, then route to **GJ402** climbing to **3000** (2361).
Climb to **1500** (861) prior to level acceleration.

MNM AD : distances verticales en pieds, RVR et VIS en mètres / vertical distances in feet, RVR and VIS in metres. REF HGT : ALT THR

CAT	LPV API 2.5%			MVL / Circling ⁽¹⁾		MVL / Circling ⁽¹⁾ Absence ATS HJ seulement / only		DIST RW05							
	DA (H)	RVR	OCH	MDA (H)	VIS	MDA (H)	VIS	NM	7	6	5	4	3	2	1
A	850 (210)	750	201	1200 (560)	1500	1630 (990)	1500	ALT	2970	2640	2310	1980	1660	1330	1010
B	850 (210)	750	210	1210 (570)	1600	1650 (1010)	1600	(HGT)	(2331)	(2001)	(1671)	(1341)	(1021)	(691)	(371)
C	860 (220)	800	220	1350 (710)	2400	1790 (1150)	2400								
D	870 (230)	800	230	1380 (740)	3600	1820 (1180)	3600								

Observations / Remarks : (1) MVL interdites au Nord de la piste / Circling prohibited North of RWY.
Panne de guidage GNSS lors de l'approche / Loss of GNSS guidance during approach : voir / see ENR 1.5.

FAP - THR	7.1 NM	70 kt 6 min 06	85 kt 5 min 01	100 kt 4 min 16	115 kt 3 min 43	130 kt 3 min 17	160 kt 2 min 40	185 kt 2 min 19
-----------	--------	-------------------	-------------------	--------------------	--------------------	--------------------	--------------------	--------------------