

APPROCHE AUX INSTRUMENTS

CASTRES MAZAMET

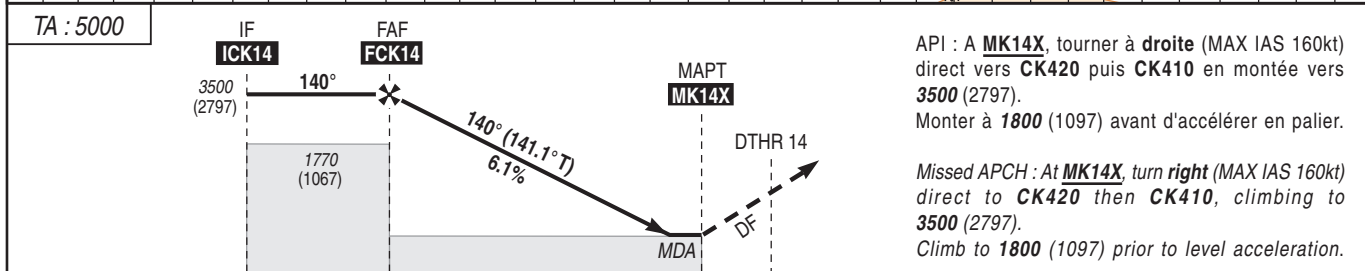
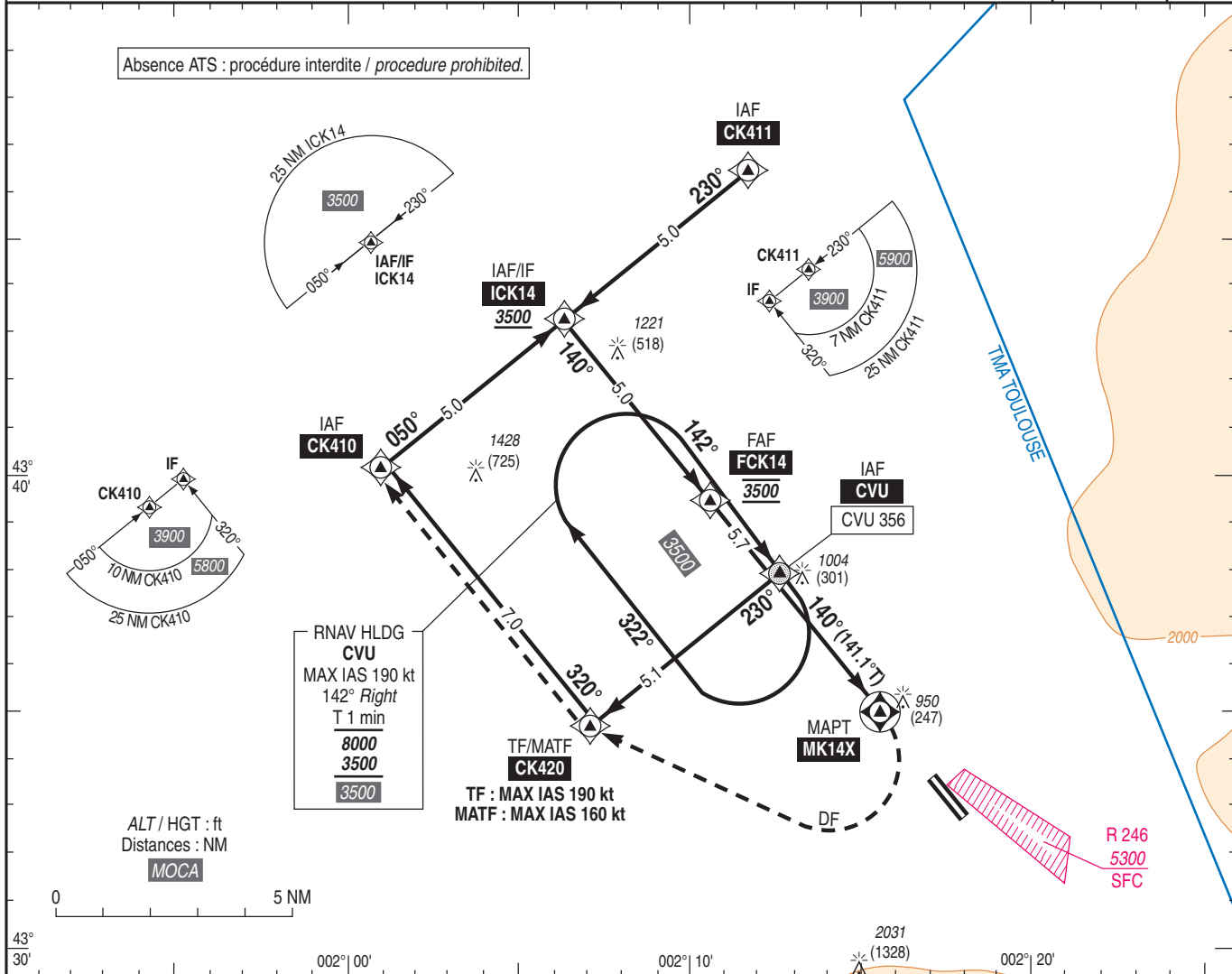
Instrument approach

CAT C

ALT AD : 785, **DTHR : 703 (26 hPa)**

RNP X RWY 14

APP : TOULOUSE Approche/Approach 129.305 (1) - 123.850 (2) TWR : NIL AFIS : CASTRES Information 118.500 (1) Au dessus de / Above FL 075 (2) Entre/Between 1500 ASFC ou/or 3000 AMSL et/and FL 075	RNP APCH	VAR 1°E (20)
---	-----------------	---------------------------



→ MK14X (NM)	10.7	5.7	0	0
→ DTHR14 (NM)	12.4	7.4	1.7	0

MNM AD : distances verticales en pieds, RVR et VIS en mètres / vertical distances in feet, RVR and VIS in metres. REF HGT : ALT DTHR

CAT	LNAV			MVL / Circling ⁽¹⁾		DIST MAPT						
	MDA (H)	RVR	OCH	MDA (H)	VIS	NM	1	2	3	4	5	6
C	1390 (690)	2400	682	2480 (1780)	2400	ALT (HGT)	1757 (1054)	2129 (1426)	2500 (1797)	2872 (2169)	3243 (2540)	3615 (2912)

Observations / Remarks : (1) MVL interdites au Sud de la piste pour les CAT C / Circling prohibited South of RWY for CAT C.
Panne de guidage GNSS lors de l'approche / Loss of GNSS guidance during approach : voir / see AIP ENR 1.5.

FAF - MAPT	5.7 NM	70 kt 4 min 53	85 kt 4 min 01	100 kt 3 min 25	115 kt 2 min 58	130 kt 2 min 37	145 kt 2 min 21	160 kt 2 min 08
VSP (ft/min)		432	525	618	711	803	896	989