

APPROCHE AUX INSTRUMENTS

BIARRITZ PAYS BASQUE

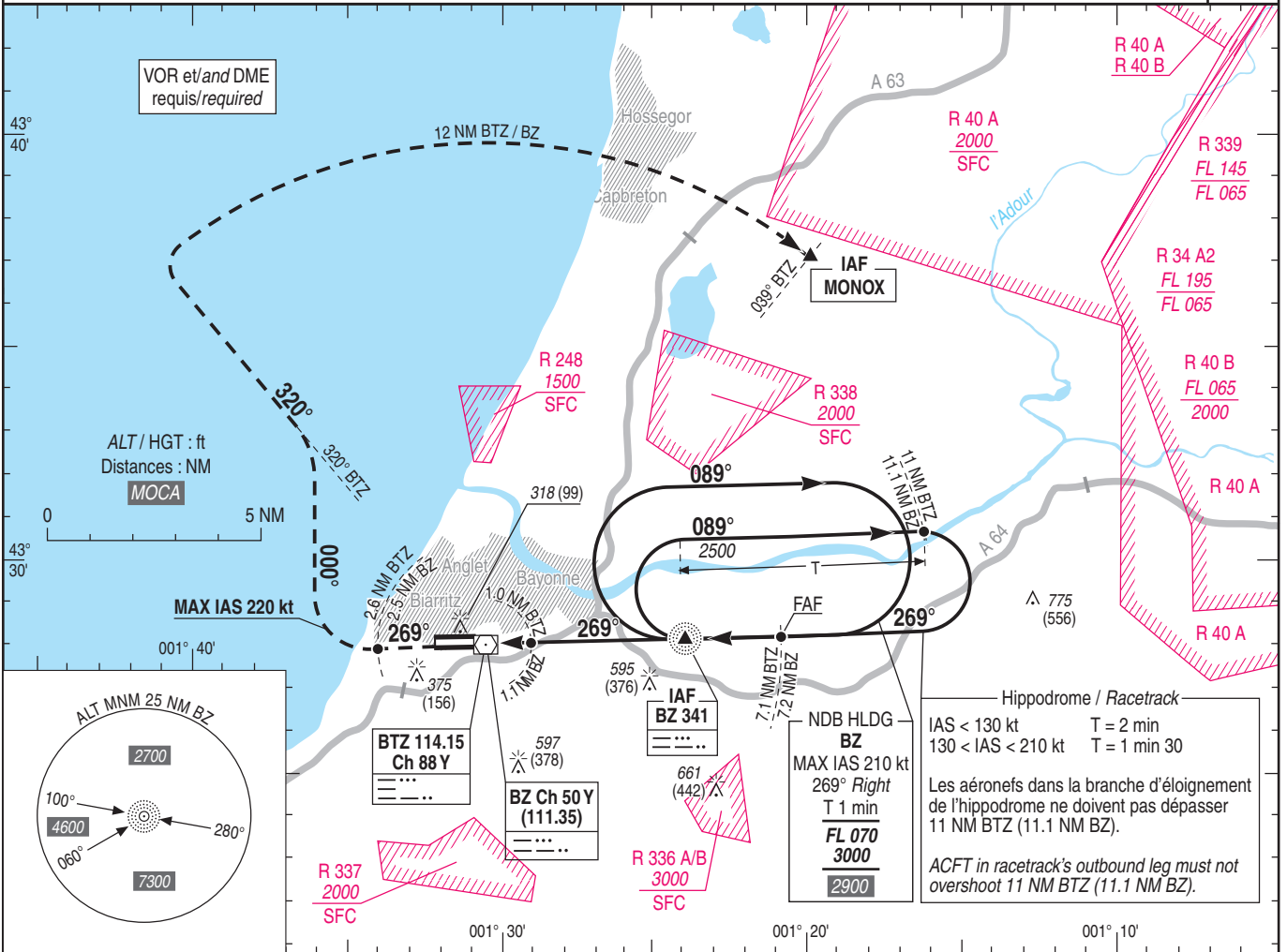
Instrument approach

CAT A B C D

ALT AD : 245, THR : 219 (8 hPa)

FNA NDB RWY 27

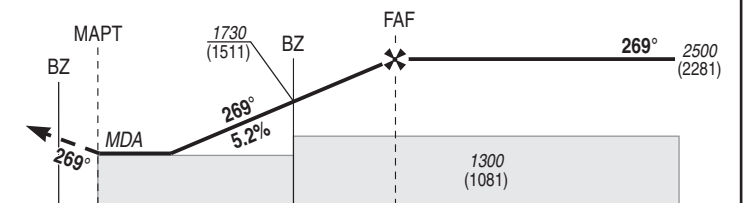
| | |
|---|--------------------------|
| ATIS BIARRITZ : 128.230 APP : BIARRITZ Approche / Approach 125.600 TWR : BIARRITZ Tour / Tower 118.700 | VAR 0° (20) |
|---|--------------------------|



TA : 5000

API : Monter au **QDR 269° BZ** (RM 269°).
A 2.6 NM BTZ (2.5 NM BZ), tourner à **droite RM 000°** jusqu'à intercepter et suivre le **RDL 320° BTZ** (RM 320°), puis intercepter et suivre l'arc **12 NM BTZ** jusqu'à **MONOX** en montée vers **4000** (3781).
 Monter à **1200** (981) avant d'accélérer en palier.

Missed APCH : Climb **QDR 269° BZ** (MAG 269°).
At 2.6 NM BTZ (2.5 NM BZ), turn **right MAG 000°** to intercept and follow **RDL 320° BTZ** (MAG 320°), then intercept and follow **12 NM BTZ DME arc** until **MONOX** climbing up to **4000** (3781).
 Climb up to **1200** (981) prior to level acceleration.



| | | | |
|------------|-----|-----|-----|
| THR ← (NM) | 0.9 | 4.6 | 7.1 |
| BTZ ← (NM) | 1.0 | 4.7 | 7.1 |
| BZ ← (NM) | 0 | 1.1 | 4.8 |

MNM AD : distances verticales en pieds, RVR et VIS en mètres / vertical distances in feet, RVR and VIS in metres. REF HGT : ALT THR

| CAT | NDB | | | MVL / Circling ⁽¹⁾ | | DME BTZ | | | | | | DME BZ | | | | | | | | | |
|-----|-----------|------|-----|-------------------------------|------|---------|--------|--------|--------|-------|-------|--------|-------|--------|--------|--------|-------|-------|-------|--|--|
| | MDA (H) | RVR | OCH | MDA (H) | VIS | NM | 6 | 5 | 4 | 3 | 2 | 1 | NM | 6 | 5 | 4 | 3 | 2 | 1 | | |
| A | 820 (600) | 1500 | 593 | 820 (600) | 1500 | ALT | 2160 | 1840 | 1520 | 1210 | 890 | 570 | ALT | 2120 | 1800 | 1490 | 1170 | 860 | 570 | | |
| B | | 1500 | | 900 (680) | 1600 | (HGT) | (1941) | (1621) | (1301) | (991) | (671) | (351) | (HGT) | (1901) | (1581) | (1271) | (951) | (641) | (351) | | |
| C | | 2400 | | 1000 (780) | 2400 | | | | | | | | | | | | | | | | |
| D | | 2400 | | 1070 (850) | 3600 | | | | | | | | | | | | | | | | |

Observations/Remarks : (1) MVL interdites au Nord de la piste. Circuit AD RWY 09 : Droite / Circling prohibited North of RWY. Aerodrome circuit RWY 09 : right hand.

| | | | | | | | | | | | |
|--------------|--------|----------|----------|----------|----------|----------|----------|----------|----------|----------|----------|
| BZ - MAPT | 3.7 NM | 70 kt | 80 kt | 90 kt | 100 kt | 115 kt | 130 kt | 145 kt | 160 kt | 175 kt | 185 kt |
| BZ - THR | 4.6 NM | 3 min 10 | 2 min 47 | 2 min 28 | 2 min 13 | 1 min 56 | 1 min 42 | 1 min 32 | 1 min 23 | 1 min 16 | 1 min 12 |
| VSP (ft/min) | | 375 | 430 | 480 | 535 | 615 | 700 | 775 | 850 | 930 | 990 |