

APPROCHE AUX INSTRUMENTS

BIARRITZ PAYS BASQUE

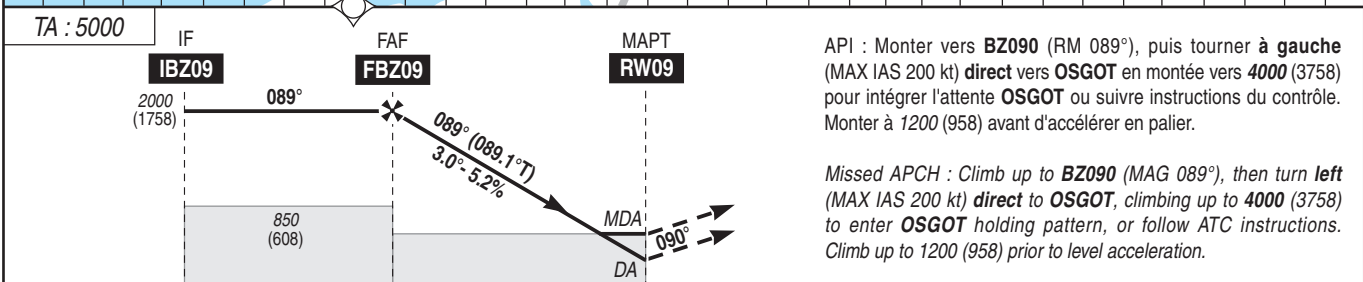
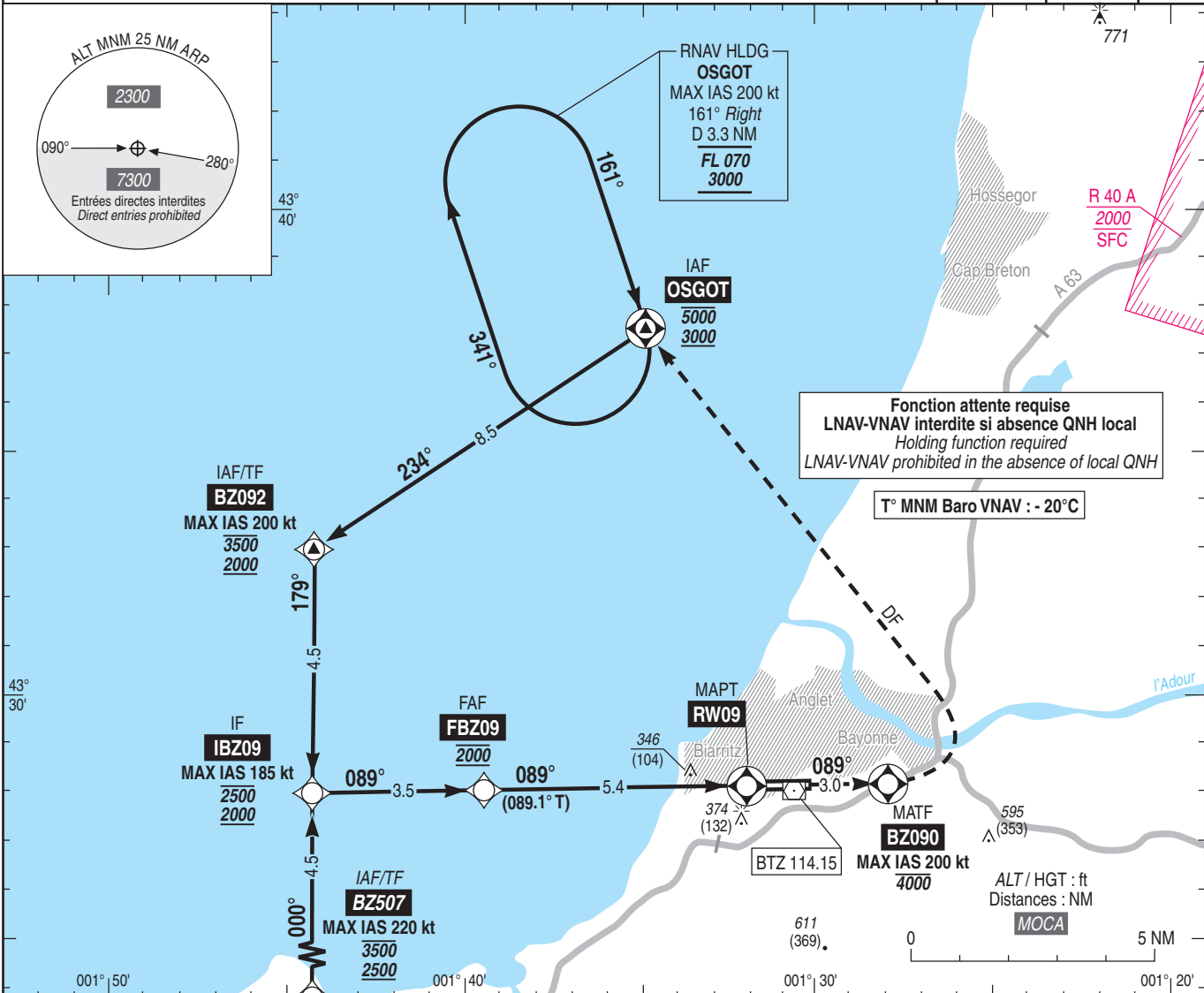
Instrument approach

CAT A B C D

ALT AD : 245, DTHR : 242 (9 hPa)

RNP RWY 09

ATIS BIARRITZ : 128.230 APP : BIARRITZ Approche / Approach 125.600 TWR : BIARRITZ Tour / Tower 118.700	RNP APCH	EGNOS Ch 81671 E09A RDH : 49	VAR 0° (20)
---	-----------------	--	--------------------------



API : Monter vers **BZ090** (RM 089°), puis tourner à gauche (MAX IAS 200 kt) direct vers **OSGOT** en montée vers 4000 (3758) pour intégrer l'attente **OSGOT** ou suivre instructions du contrôle. Monter à 1200 (958) avant d'accélérer en palier.

Missed APCH : Climb up to **BZ090** (MAG 089°), then turn left (MAX IAS 200 kt) direct to **OSGOT**, climbing up to 4000 (3758) to enter **OSGOT** holding pattern, or follow ATC instructions. Climb up to 1200 (958) prior to level acceleration.

→ DTHR (NM) 8.9 5.4 0

MNM AD : distances verticales en pieds, RVR et VIS en mètres / vertical distances in feet, RVR and VIS in metres. REF HGT : ALT DTHR

CAT	LPV			LNAV-VNAV			LNAV			MVL / Circling (1)		DIST RW09																		
	DA (H)	RVR	OCH	DA (H)	RVR	OCH	MDA (H)	RVR	OCH	MDA (H)	VIS																			
A			181	500 (250)	800	236				720 (470)	1500	<table border="1"> <tr> <td>NM</td> <td>5</td> <td>4</td> <td>3</td> <td>2</td> <td>1</td> </tr> <tr> <td>ALT</td> <td>1880</td> <td>1560</td> <td>1240</td> <td>930</td> <td>610</td> </tr> <tr> <td>(HGT)</td> <td>(1638)</td> <td>(1318)</td> <td>(998)</td> <td>(688)</td> <td>(368)</td> </tr> </table>	NM	5	4	3	2	1	ALT	1880	1560	1240	930	610	(HGT)	(1638)	(1318)	(998)	(688)	(368)
NM	5	4	3	2	1																									
ALT	1880	1560	1240	930	610																									
(HGT)	(1638)	(1318)	(998)	(688)	(368)																									
B	500 (250)	800	191	500 (250)	800	246	600 (360)	1200	351	900 (650)	1600																			
C			200	500 (260)	800	255				1000 (750)	2400																			
D			210	510 (270)	900	265				1070 (820)	3600																			

Observations / Remarks : (1) MVL interdites au Nord de la piste / Circling prohibited North of RWY.

FAF - RW09	5.4 NM	70 kt	85 kt	100 kt	115 kt	130 kt	160 kt	185 kt
		4 min 38	3 min 49	3 min 15	2 min 49	2 min 30	2 min 02	1 min 45
VSP (ft/min)		370	450	530	610	690	850	980