

**APPROCHE AUX INSTRUMENTS**

**TOULOUSE BLAGNAC**

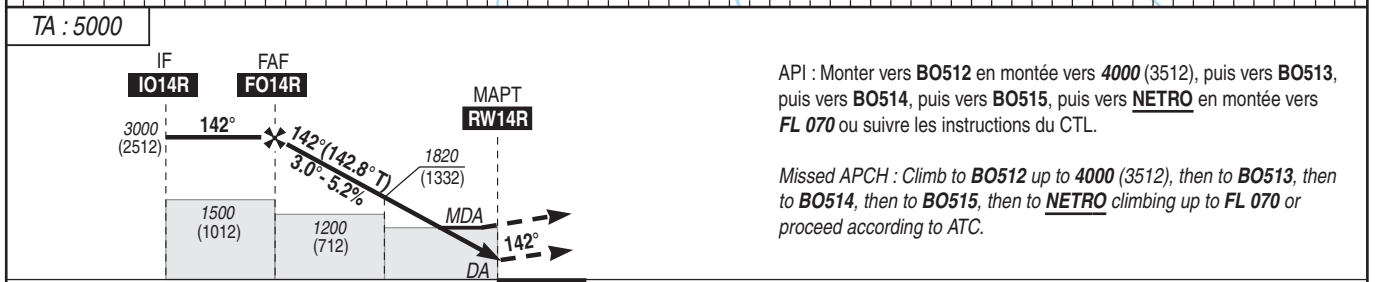
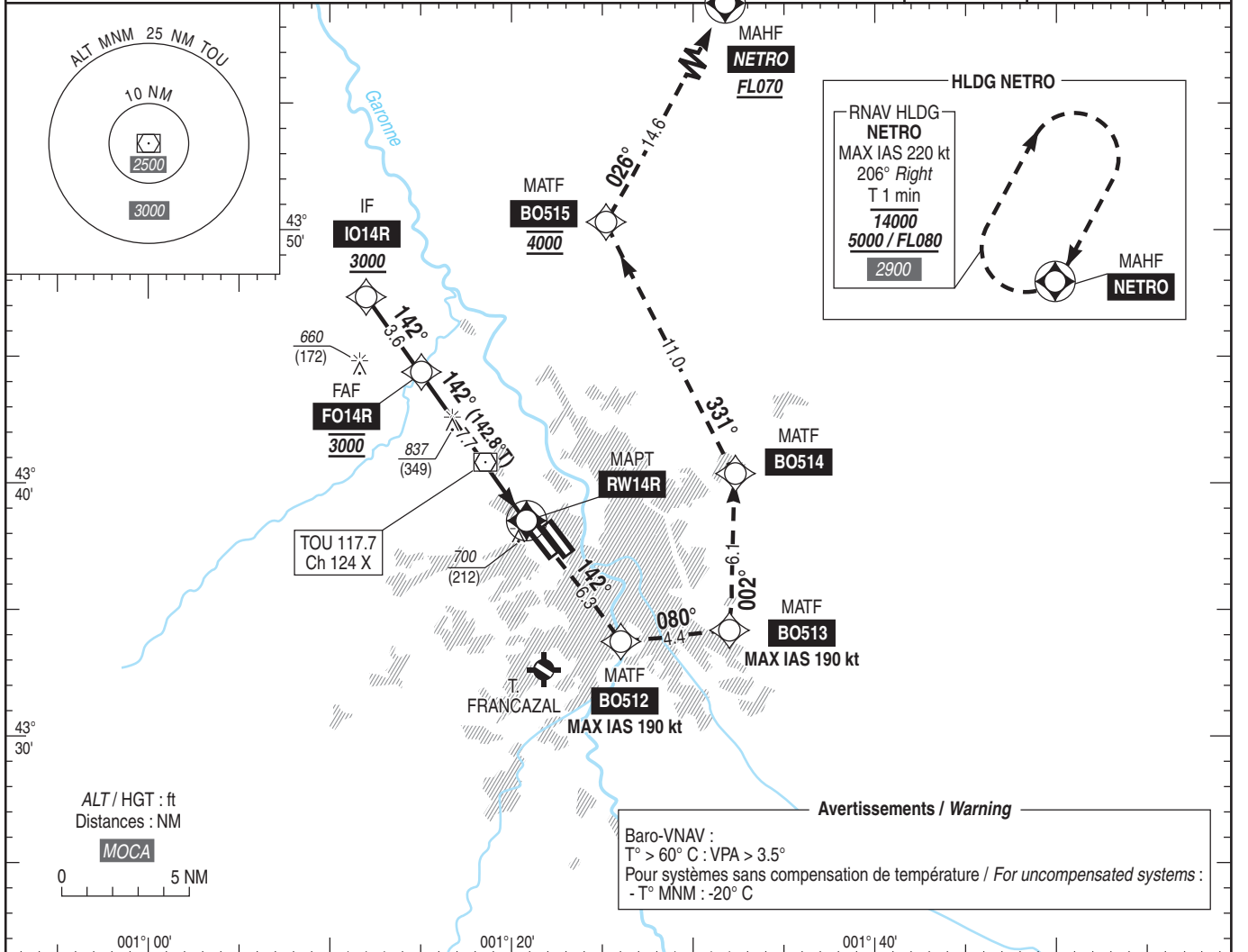
Instrument approach

CAT A B C D

ALT AD : 499, THR : 488 (18 hPa)

FNA RNP RWY 14R

<p>ATIS BLAGNAC : 123.130                  APP : TOULOUSE Approche / Approach 129.305 (1) - 125.180 (2) - 124.975 (s)                  BLAGNAC Approche / Approach 121.105                  TWR : BLAGNAC Tour / Tower 118.100</p>	<p>(1) Secteur Est / East sector                  (2) Secteur Ouest / West sector</p>	<p>RNP APCH</p>	<p>EGNOS                  Ch57314                  E14A                  RDH : 56</p>	<p>VAR                  1° E                  (20)</p>
--	---	-----------------	---	--



MNM AD : distances verticales en pieds, RVR et VIS en mètres / vertical distances in feet, RVR and VIS in metres. REF HGT : ALT THR

CAT	LPV			LNAV/VNAV			LNAV			MVL / Circling <sup>(1)</sup>		DIST RW14R
	DA (H)	RVR	OCH	DA (H)	RVR	OCH	MDA (H)	RVR	OCH	MDA (H)	VIS	
A	710 (220)	550	220							1030 (530)	1500	NM 7 6 5 4 3 2 ALT 2775 2455 2135 1820 1500 1180 (HGT) (2287) (1967) (1647) (1332) (1012) (692)
B	720 (230)	550	230	900 (410)	1200	405	950 (460)	1400	458	1050 (550)	1600	
C	750 (270)	600	261							1220 (730)	2400	
D	760 (280)	600	271							1320 (830)	3600	
DL	770 (280)	600	280									

Observations/Remarks : (1) MVL interdites au Nord-Est de la piste / Circling prohibited North-East of RWY.  
 Panne de guidage GNSS durant l'approche / GNSS guidance loss during approach : voir/see AIP ENR 1.5.

FAF - RW14R	7.71 NM	70 kt	85 kt	100 kt	115 kt	130 kt	160 kt	185 kt
VSP (ft/min)		400	480	570	650	740	910	1050
		6 min 36	5 min 26	4 min 37	4 min 01	3 min 33	2 min 53	2 min 30