

APPROCHE AUX INSTRUMENTS

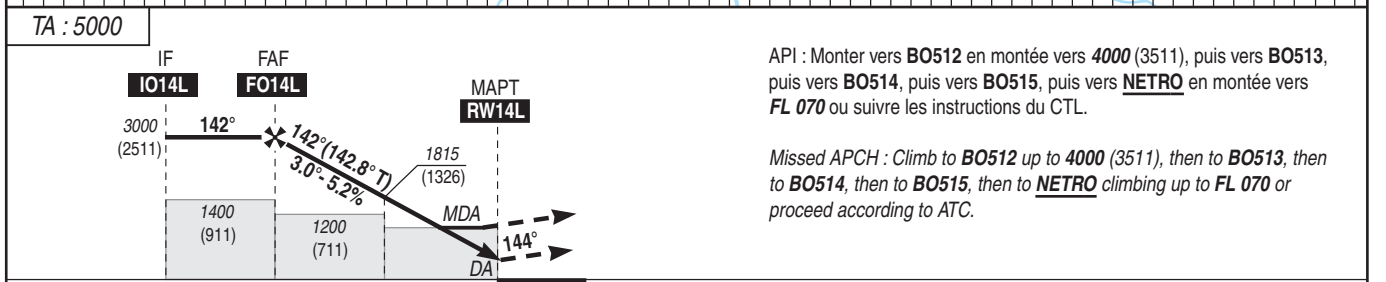
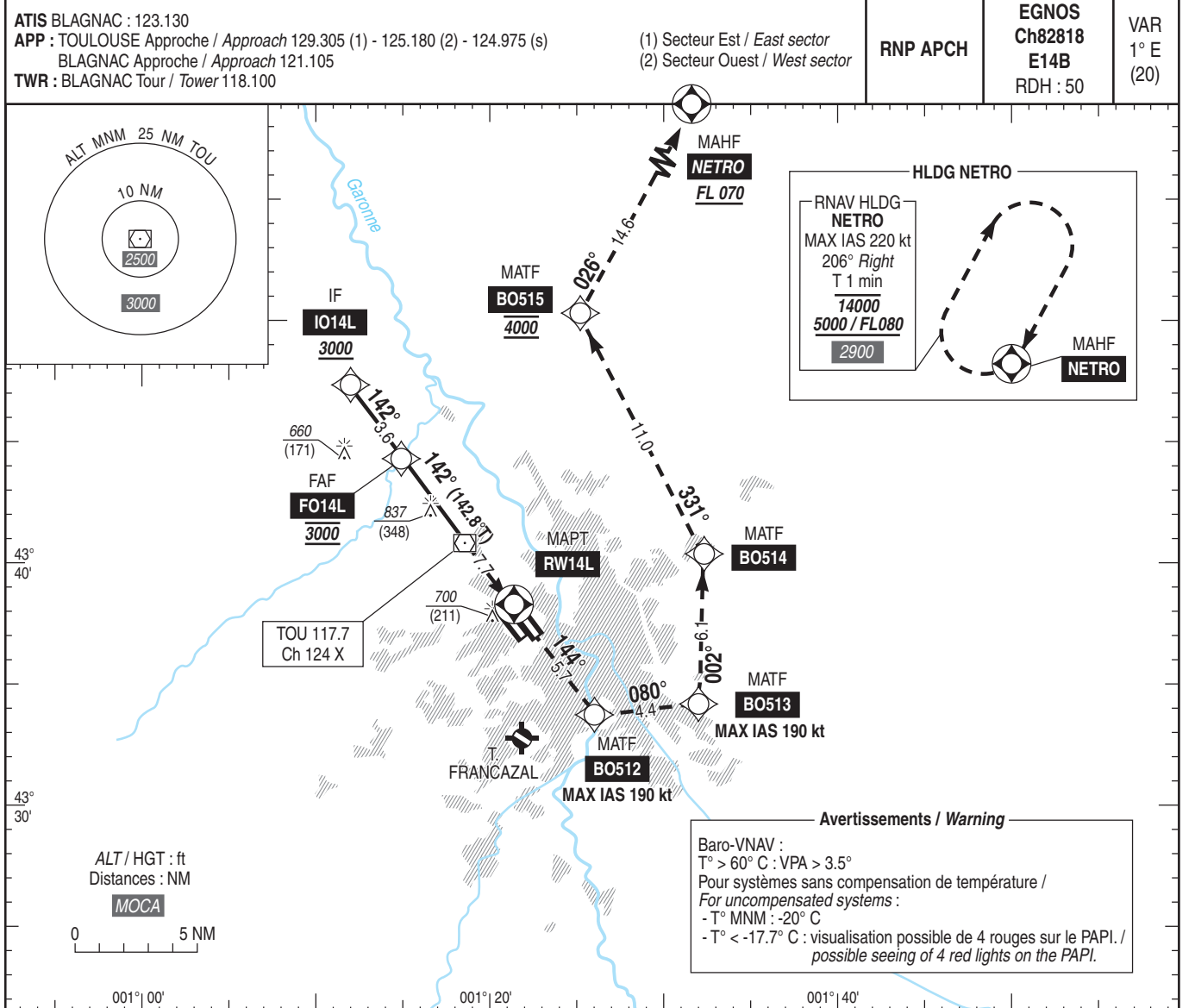
TOULOUSE BLAGNAC

Instrument approach

CAT A B C D

ALT AD : 499, THR : 489 (18 hPa)

FNA RNP RWY 14L



MNM AD : distances verticales en pieds, RVR et VIS en mètres / vertical distances in feet, RVR and VIS in metres. REF HGT : ALT THR

CAT	LPV			LNAV/VNAV			LNAV			MVL / Circling ⁽¹⁾		DIST RW14L
	DA (H)	RVR	OCH	DA (H)	RVR	OCH	MDA (H)	RVR	OCH	MDA (H)	VIS	
A	780 (290)	650	286							1030 (550)	1500	NM 7 6 5 4 3 2 ALT 2770 2450 2130 1815 1495 1175 (HGT) (2281) (1961) (1641) (1326) (1006) (686)
B	790 (300)	650	295	910 (420)	1200	415	950 (460)	1400	457	1050 (560)	1600	
C	800 (310)	700	305							1320 (830)	2400	
D	810 (320)	700	315							1320 (830)	3600	
DL	810 (320)	700	315									

Observations/Remarks : (1) MVL interdites au Nord-Est de la piste / Circling prohibited North-East RWY.
 Panne de guidage GNSS durant l'approche / GNSS guidance loss during approach : voir/see AIP ENR 1.5

	FAF - RW14L 7.73 NM	70 kt 6 min 36	85 kt 5 min 26	100 kt 4 min 37	115 kt 4 min 01	130 kt 3 min 33	160 kt 2 min 53	185 kt 2 min 30
VSP (ft/min)		400	480	570	650	740	910	1050