

**APPROCHE AUX INSTRUMENTS**

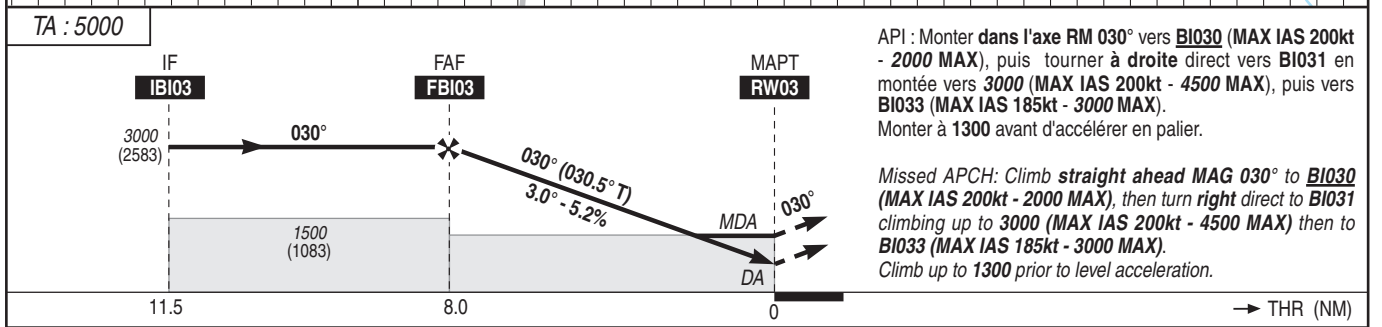
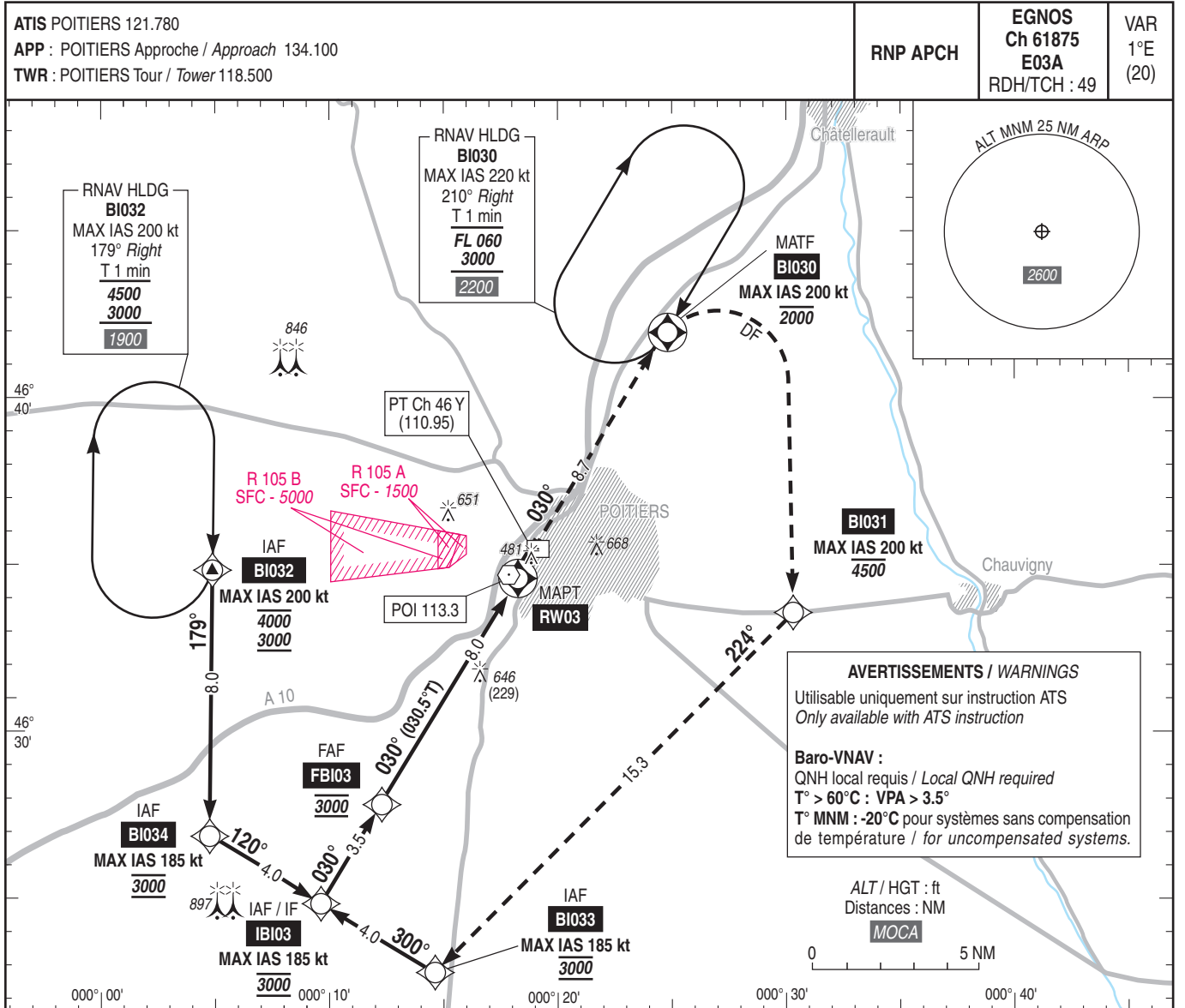
**POITIERS BIARD**

Instrument approach

CAT A B C D

ALT AD : 423, THR : 417 (15 hPa)

**RNP RWY 03**



MNM AD : distances verticales en pieds, RVR et VIS en mètres / vertical distances in feet, RVR and VIS in metres. REF HGT : ALT THR

CAT	LPV			LNAV-VNAV			LNAV			MVL / Circling (1)		DIST RW03 NM ALT (HGT)						
	DA (H)	RVR	OCH	DA (H)	RVR	OCH	MDA (H)	RVR	OCH	MDA (H)	VIS							
A	670 (250)	1300	163	670 (250)	1300	174	890 (470)	1500	467	970 (560)	1500	7 2700 (2283)	6 2380 (1963)	5 2060 (1643)	4 1750 (1333)	3 1430 (1013)	2 1110 (693)	
B			173			181				1500	970 (560)							1600
C			183			194				2200	1150 (730)							2400
D			193			220				2200	1150 (730)							3600

Observations / Remarks : (1) MVL interdites au Sud-Est de la piste. Circuit AD RWY 21 : 1000 ft à droite ou à gauche.  
(1) Circling prohibited South-East of RWY. AD circuit RWY 21 : 1000 ft right hand or left hand.

FAF-RW03	8.0 NM	70 kt	80 kt	90 kt	100 kt	115 kt	130 kt	145 kt	160 kt	185 kt
VSP (ft/min)		6 min 51	6 min 00	5 min 20	4 min 48	4 min 10	3 min 42	3 min 19	3 min 00	2 min 36
		370	420	480	530	610	690	770	840	980