

APPROCHE AUX INSTRUMENTS

ALBERT BRAY

Instrument approach

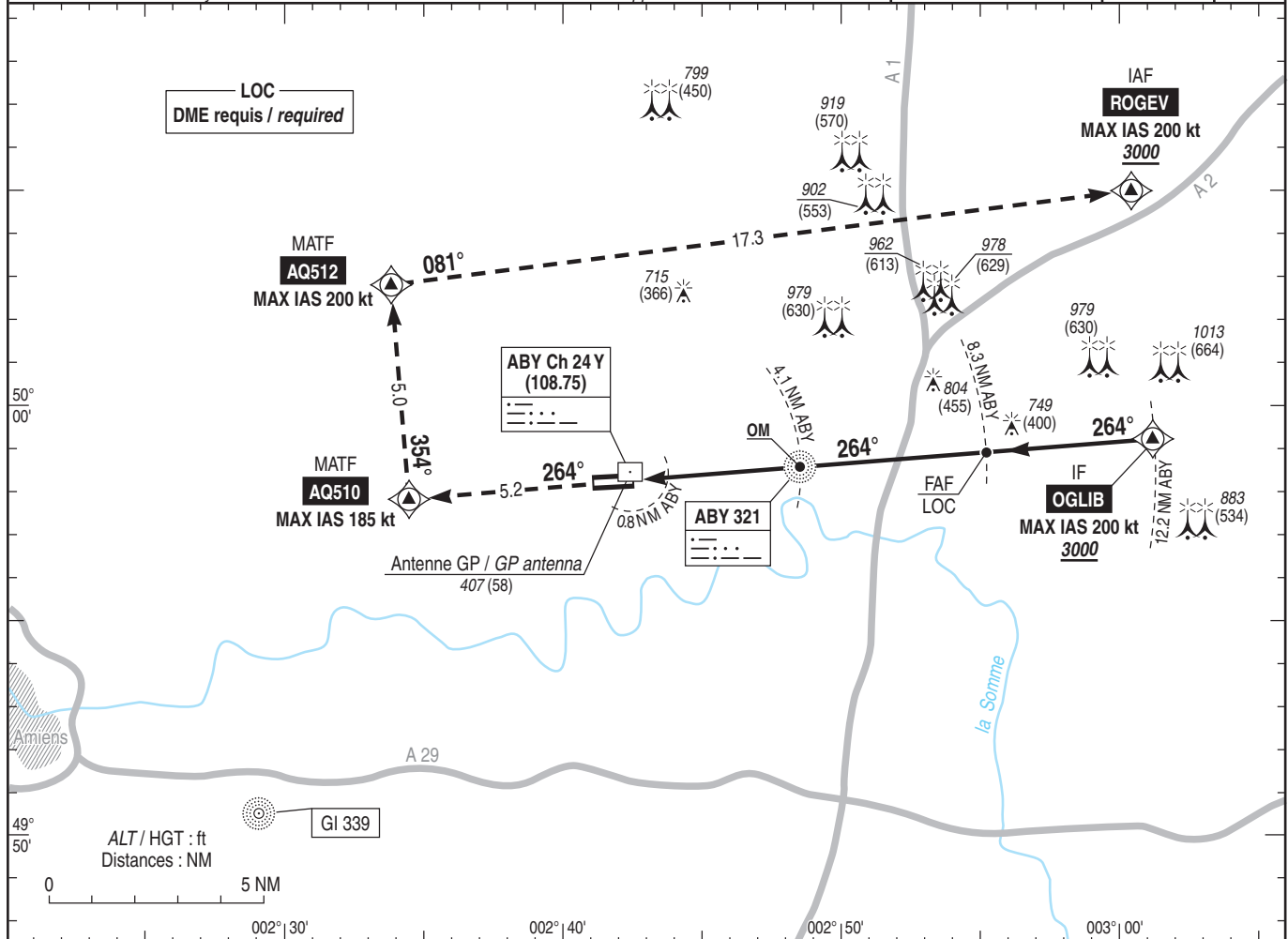
CAT A B C D

ALT AD : 363, THR : 349 (13 hPa)

FNA ILS Z ou/ or LOC Z RWY 26

APP : LILLE Approche / Approach 134.825
 TWR : ALBERT Tour / Tower 119.655
 AFIS : ALBERT Information 119.655
 Absence ATS : A/A FR seulement. Obtenir le QNH de LILLE sur ATIS LILLE 119.330 ou LILLE Approche.
 A/A FR only. Obtain LILLE QNH from ATIS LILLE 119.330 or LILLE Approach.

| | | |
|---|---|---------------------------|
| RNAV 1 GNSS seulement / only ou / or RNP APCH requis / required | ILS - DME ABY 108.75 RDH : 49 | VAR 1°E (20) |
|---|---|---------------------------|



TA : 5000

API : Monter vers **AQ510** (MAX IAS 185 kt), puis tourner à droite vers **AQ512**, puis tourner à droite vers **ROGEV** en montée vers **3000** (2651) (MAX IAS 200 kt).
Ne pas tourner avant le MAPT.
 Monter à **1400** (1051) avant d'accélérer en palier.

Missed APCH : Climb up to **AQ510** (MAX IAS 185 kt), then turn right to **AQ512**, then turn right to **ROGEV** climbing up to **3000** (2651) (MAX IAS 200 kt).
Do not turn before MAPT.
 Climb up to **1400** (1051) prior to level acceleration.

| | | | | | |
|----------------|---|-----|-----|-----|------|
| THR ← (NM) | 0 | 0.6 | 3.9 | 8.1 | 12.1 |
| DME ABY ← (NM) | 0 | 0.8 | 4.1 | 8.3 | 12.2 |

MNM AD : distances verticales en pieds, RVR et VIS en mètres / vertical distances in feet, RVR and VIS in metres. REF HGT : ALT THR

| CAT | ILS Z | | | LOC Z | | | MVL / Circling (1) | | MVL/Circling (1) absence ATS HJ seulement/only | | DME ABY | | | | | | | |
|-----|-----------|-----|-----|-----------|------|-----|--------------------|------|--|------|---------|--------|--------|--------|--------|--------|-------|-------|
| | DA (H) | RVR | OCH | MDA (H) | RVR | OCH | MDA (H) | VIS | MDA (H) | VIS | NM | 8 | 7 | 6 | 5 | 4 | 3 | 2 |
| A | | | 161 | | 1500 | | 870 (530) | 1500 | 1040 (700) | 1500 | 2890 | 2580 | 2260 | 1940 | 1620 | 1300 | 980 | |
| B | | | 171 | | 1500 | | 920 (570) | 1600 | 1090 (740) | 1600 | (HGT) | (2541) | (2231) | (1911) | (1591) | (1271) | (951) | (631) |
| C | 550 (200) | 750 | 179 | 790 (440) | 1600 | 435 | 1090 (740) | 2400 | 1260 (910) | 2400 | | | | | | | | |
| D | | | 190 | | 1600 | | 1110 (760) | 3600 | 1280 (930) | 3600 | | | | | | | | |

Observations/Remarks : (1) MVL interdites au Nord de la piste pour les ACFT CAT D / Circling prohibited North of RWY for CAT D ACFT.
 Panne de guidage GNSS durant l'approche / Loss of GNSS guidance during approach : voir/see AIP ENR 1.5

| | | | | | | | | |
|----------------|--------|----------|----------|----------|----------|----------|----------|----------|
| FAF - THR | 8.1 NM | 70 kt | 85 kt | 100 kt | 115 kt | 130 kt | 160 kt | 185 kt |
| FAF - MAPT LOC | 7.5 NM | 6 min 59 | 5 min 45 | 4 min 53 | 4 min 15 | 3 min 45 | 3 min 03 | 2 min 38 |
| VSP (ft/min) | | 370 | 450 | 530 | 610 | 690 | 850 | 990 |