

**APPROCHE AUX INSTRUMENTS**

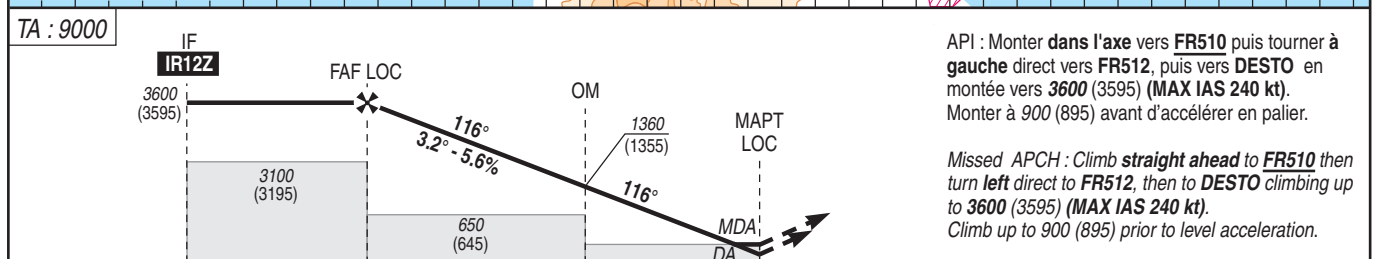
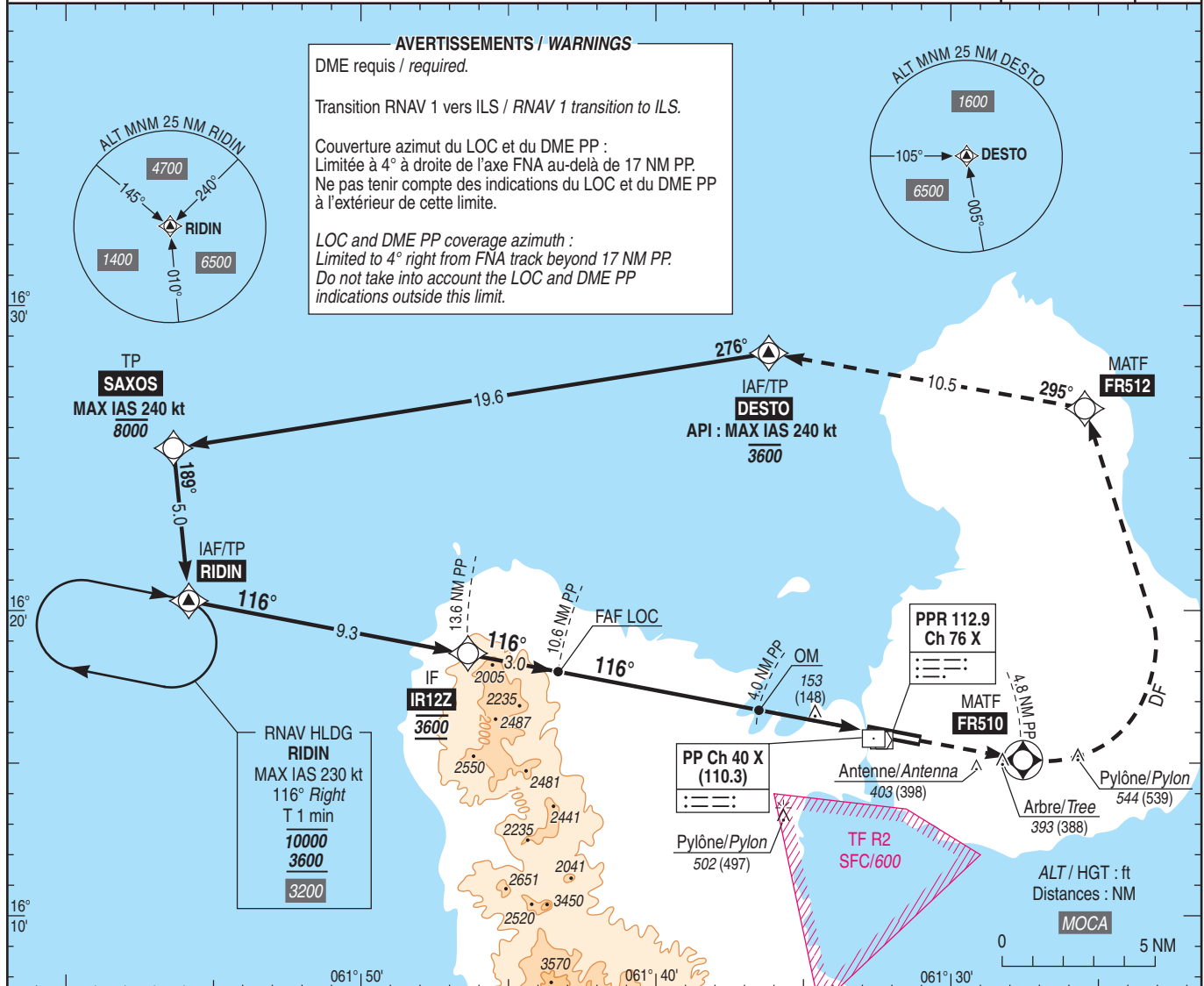
**POINTE A PITRE LE RAIZET**

Instrument approach  
CAT A B C D

ALT AD : 35, DTHR : 5 (1 hPa)

ILS Z ou/ or LOC Z RWY 12

ATIS RAIZET : 127.600 APP : RAIZET Approche/Approach 121.300 - 119.050 (s) TWR : RAIZET Tour/Tower 118.400	<b>RNAV 1</b> GNSS seulement / only	<b>ILS - DME</b> PP 110.3 RDH : 50	VAR 15°W (20)
--	--	--	---------------------



→ DTHR (NM)	13.4	10.4	3.8	0.8
→ PP (NM)	13.6	10.6	4	1
→ PPR (NM)	13.7	10.7	4.1	1.1

MNM AD : distances verticales en pieds, RVR et VIS en mètres / vertical distances in feet, RVR and VIS in metres. REF HGT : ALT DTHR

CAT	ILS Z			LOC Z			MVL / Circling		DME/PP									
	DA (H)	RVR	OCH	MDA (H)	RVR	OCH	MDA (H)	VIS	NM	10	9	8	7	6	5	4	3	2
A	240 (230)	1200	227		1500		700 (700)	1500	ALT	3400	3060	2720	2380	2040	1700	1360	1020	680
B	240 (240)	1200	235	400 (400)	1500		710 (700)	1600	(HGT)	(3395)	(3055)	(2715)	(2375)	(2035)	(1695)	(1355)	(1015)	(675)
C	250 (250)	1300	244		1800	395	900 (900)	2400	ALT	3360	3020	2680	2340	2000	1660	1330	990	650
D	260 (260)	1300	252		1800		940 (940)	3600	(HGT)	(3355)	(3015)	(2675)	(2335)	(1995)	(1655)	(1325)	(985)	(645)

Observations / Remarks : Panne de guidage GNSS lors de l'approche / Loss of GNSS guidance during approach : voir/see ENR 1.5.

OM - DTHR	3.8 NM	70 kt	85 kt	100 kt	115 kt	130 kt	145 kt	160 kt	185 kt
VSP (ft/min)		3 min 18	2 min 43	2 min 19	2 min 00	1 min 47	1 min 36	1 min 27	1 min 15
		395	480	565	650	735	820	905	1045