

APPROCHE AUX INSTRUMENTS

MARTINIQUE AIME CESAIRE

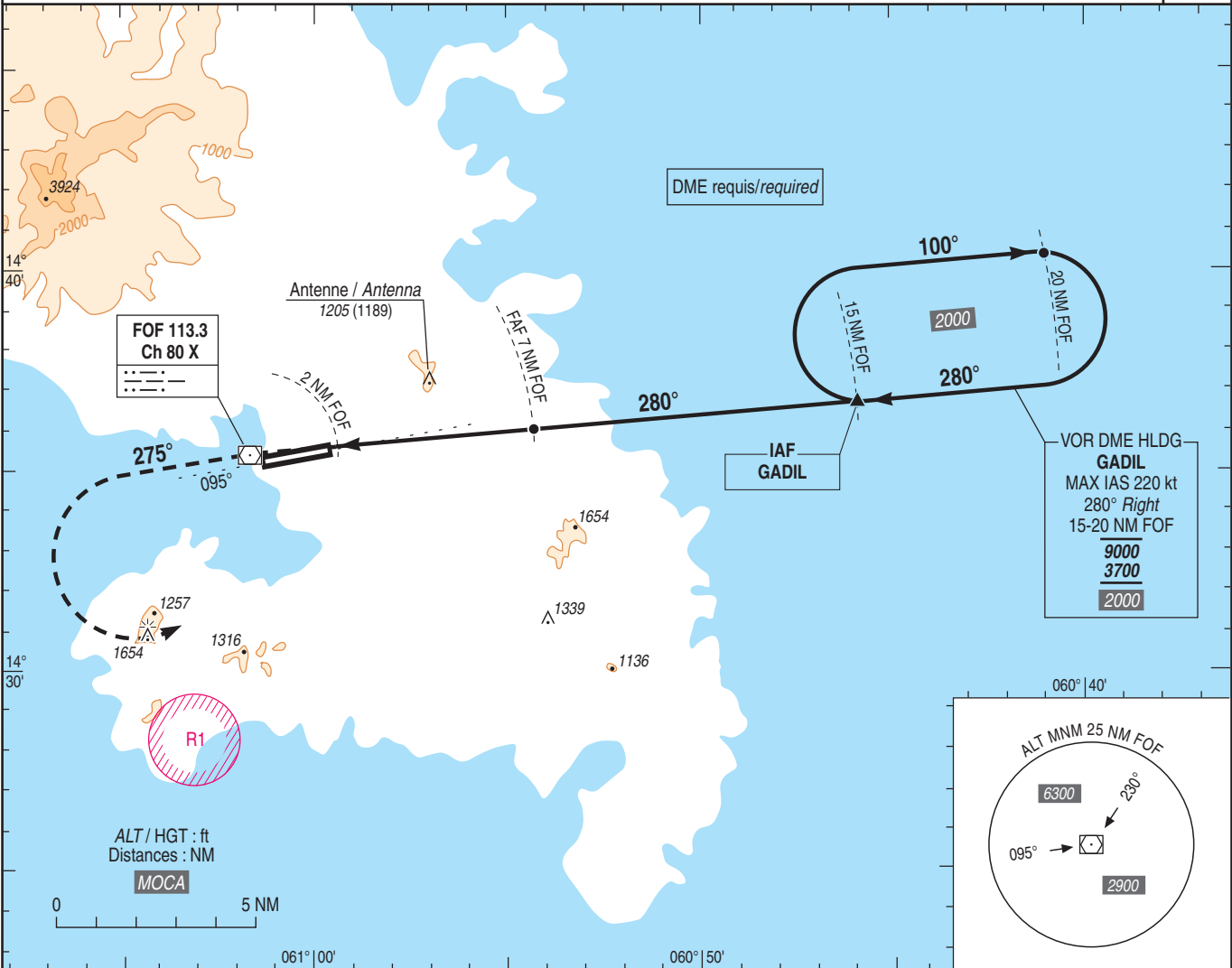
Instrument approach

CAT A B C D

ALT AD : 16 (1 hPa), DTHR : 12

VOR RWY 28

| | |
|--|----------------------|
| ATIS : MARTINIQUE 127.850 APP : MARTINIQUE Approche / Approach 121.000 - 129.050 (s) TWR : MARTINIQUE Tour / Tower 118.500 | VAR 15° W (20) |
|--|----------------------|

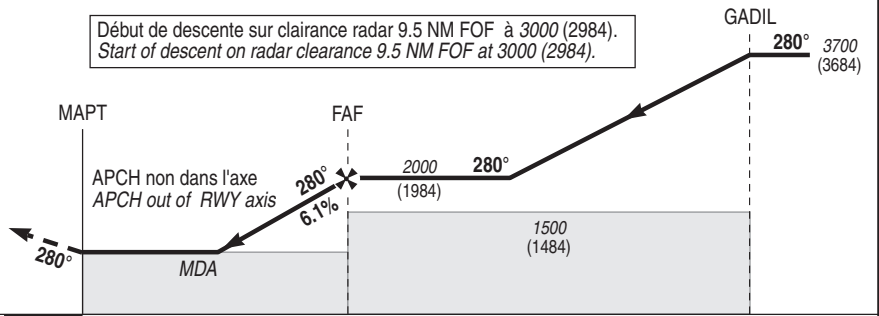


TA : 9000

API : Monter sur RDL 100° FOF (RM 280°).
 A FOF suivre RDL 275° FOF (RM 275°).
 A 2500 (2484) virer à gauche pour intercepter et suivre le RDL 100° FOF (RM 100°) vers GADIL en montée vers 3700 (3684). Ne pas virer avant FOF.
 Monter à 2500 (2484) avant d'accélérer en palier.

Début de descente sur clairance radar 9.5 NM FOF à 3000 (2984).
 Start of descent on radar clearance 9.5 NM FOF at 3000 (2984).

Missed APCH : Climb RDL 100° FOF (MAG 280°).
 At FOF follow RDL 275° FOF (MAG 275°).
 At 2500 (2484) turn left to intercept and follow RDL 100° FOF (MAG 100°) to GADIL climbing up to 3700 (3684). Do not turn before FOF.
 Climb up to 2500 (2484) prior to level acceleration.



| | | | | |
|------------|-----|-----|-----|------|
| DME ← (NM) | 2.0 | 7.0 | 9.5 | 15.0 |
| THR ← (NM) | 0.3 | 5.3 | | 13.3 |

MNM AD : distances verticales en pieds, RVR en mètres / vertical distances in feet, RVR in metres. REF HGT : ALT AD

| CAT | VOR | | | DME FOF NM | 6 | 5 |
|-----|-------------|------|------|------------|--------|--------|
| | MDA (H) | RVR | OCH | | | |
| A | 1390 (1380) | 5000 | 1372 | ALT | 1650 | 1280 |
| B | | | | (HGT) | (1634) | (1264) |
| C | | | | | | |
| D | | | | | | |

| | | | | | | | | |
|------------|------|----------|----------|----------|----------|----------|----------|----------|
| FAF - MAPT | 5 NM | 70 kt | 85 kt | 100 kt | 115 kt | 130 kt | 160 kt | 185 kt |
| | | 4 min 17 | 3 min 44 | 3 min 19 | 2 min 59 | 2 min 18 | 1 min 52 | 1 min 37 |