

**APPROCHE AUX INSTRUMENTS**

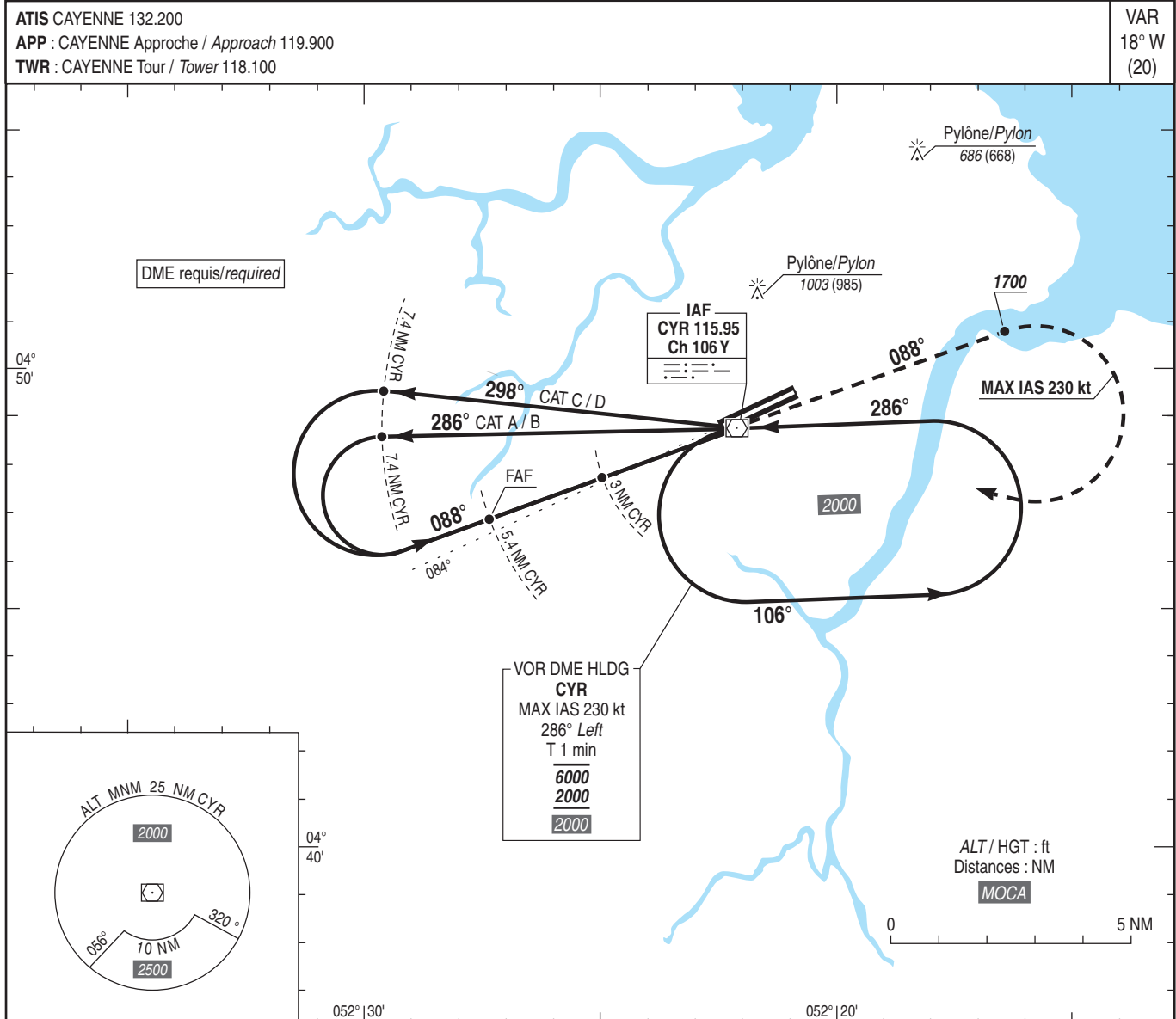
**CAYENNE FELIX EBOUE**

Instrument approach

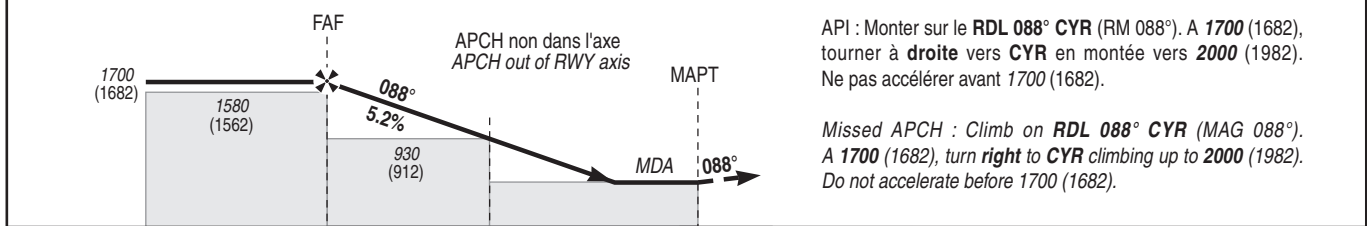
CAT A B C D

ALT AD : 26, THR : 18 (1 hPa)

VOR Z RWY 08



TA : 3000



→ THR (NM) 5.1 2.7  
→ CYR (NM) 5.4 3

MNM AD : distances verticales en pieds, RVR et VIS en mètres / vertical distances in feet, RVR and VIS in metres. REF HGT : ALT THR

CAT	VOR Z			MVL / Circling (1)			DME CYR					
	MDA (H)	RVR	OCH	MDA (H)	VIS	OCH	NM	5	4	3	2	1
A	460 (440)	1500	439	730 (710)	1600	708	ALT	1560	1250	930	620	300
B		1500		730 (720)	1600	711	(HGT)	(1542)	(1232)	(912)	(602)	(282)
C		1600		910 (890)	2400	888						
D		1600		1090 (1080)	3600	1072						

Observations / Remarks : (1) MVL interdites au Nord de la piste - HJ seulement / Circling prohibited North of RWY - HJ only.

		70 kt	85 kt	100 kt	115 kt	130 kt	160 kt	185 kt
FAF - THR	5.1 NM	4 min 24	3 min 37	3 min 05	2 min 41	2 min 22	1 min 55	1 min 40
FAF - MAPT	5.4 NM	4 min 38	3 min 49	3 min 14	2 min 49	2 min 30	2 min 02	1 min 45
VSP (ft/min)		370	450	530	610	685	845	980