

APPROCHE AUX INSTRUMENTS

SAINT PIERRE

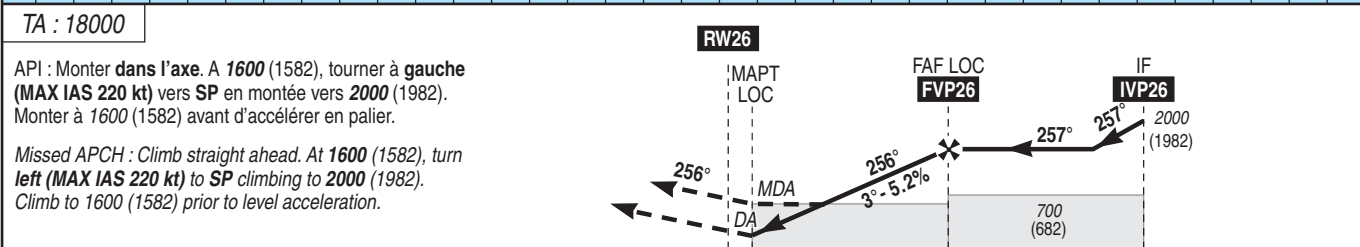
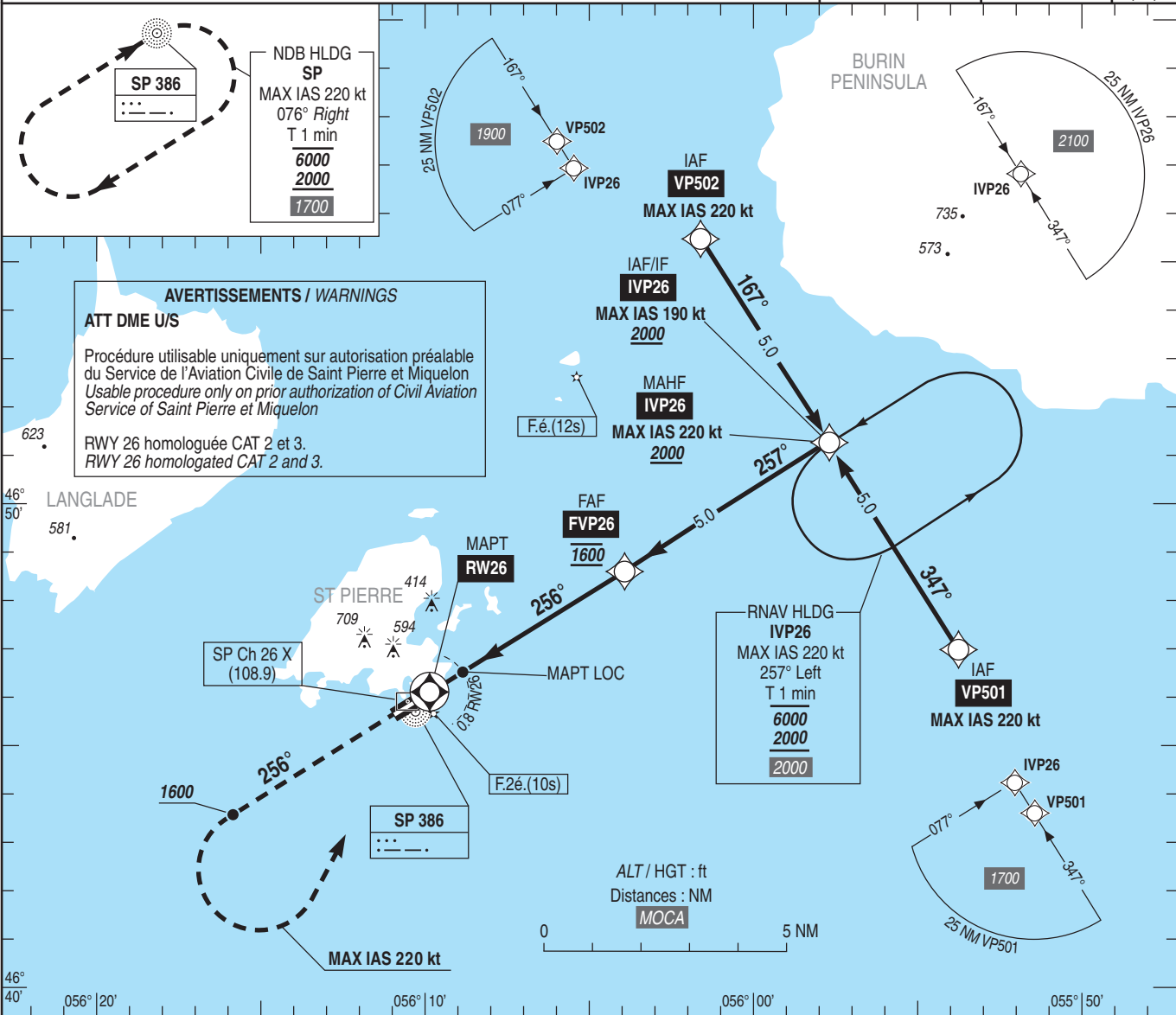
Instrument approach

CAT A B C

ALT AD : 28, THR : 18 (1 hPa)

ILS y CAT I ou/ or ILS y CAT II et/ and III ou/ or LOC y RWY 26

APP : SAINT PIERRE Approche/Approach 119.100 - 118.500	RNP APCH	ILS SP 108.9 RDH : 52	VAR 18°W (20)
TWR : SAINT PIERRE Tour/Tower 119.100 - 118.500			



THR ← (NM)

0	0.8	4.8	9.8
---	-----	-----	-----

MNM AD : distances verticales en pieds, RVR et VIS en mètres / vertical distances in feet, RVR and VIS in meters. REF HGT : ALT THR

C A T	ILS y				LOC y			MVL / Circling (1)		DIST RW26				
	DA (H)	RVR	OCH CAT 1	OCH CAT 2	MDA (H)	VIS	OCH	MDA (H)	VIS	NM	1	2	3	4
A			150	62		1200		560 (540)	1500	ALT	390	710	1030	1340
B	220 (200)	700	159	73	350 (330)	1300	327	560 (540)	1600	(HGT)	(372)	(692)	(1012)	(1322)
C			168	85		1400		660 (640)	2400					

Observations / Remarks : (1) MVL interdites au Nord de la piste / Circling not authorized North of runway.
Panne de guidage GNSS lors de l'approche / Loss of GNSS guidance during approach : voir/see AIP ENR 1.5.

FAF - RW26	4.8 NM	70 kt 4 min 07	85 kt 3 min 23	100 kt 2 min 53	115 kt 2 min 30	130 kt 2 min 13	145 kt 1 min 59	160 kt 1 min 48
VSP (ft/min)		370	450	530	610	685	765	845