

**APPROCHE AUX INSTRUMENTS**

**SAINT PIERRE**

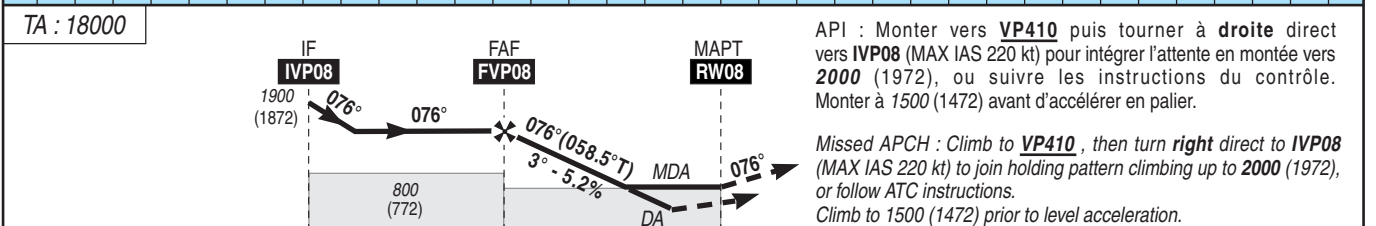
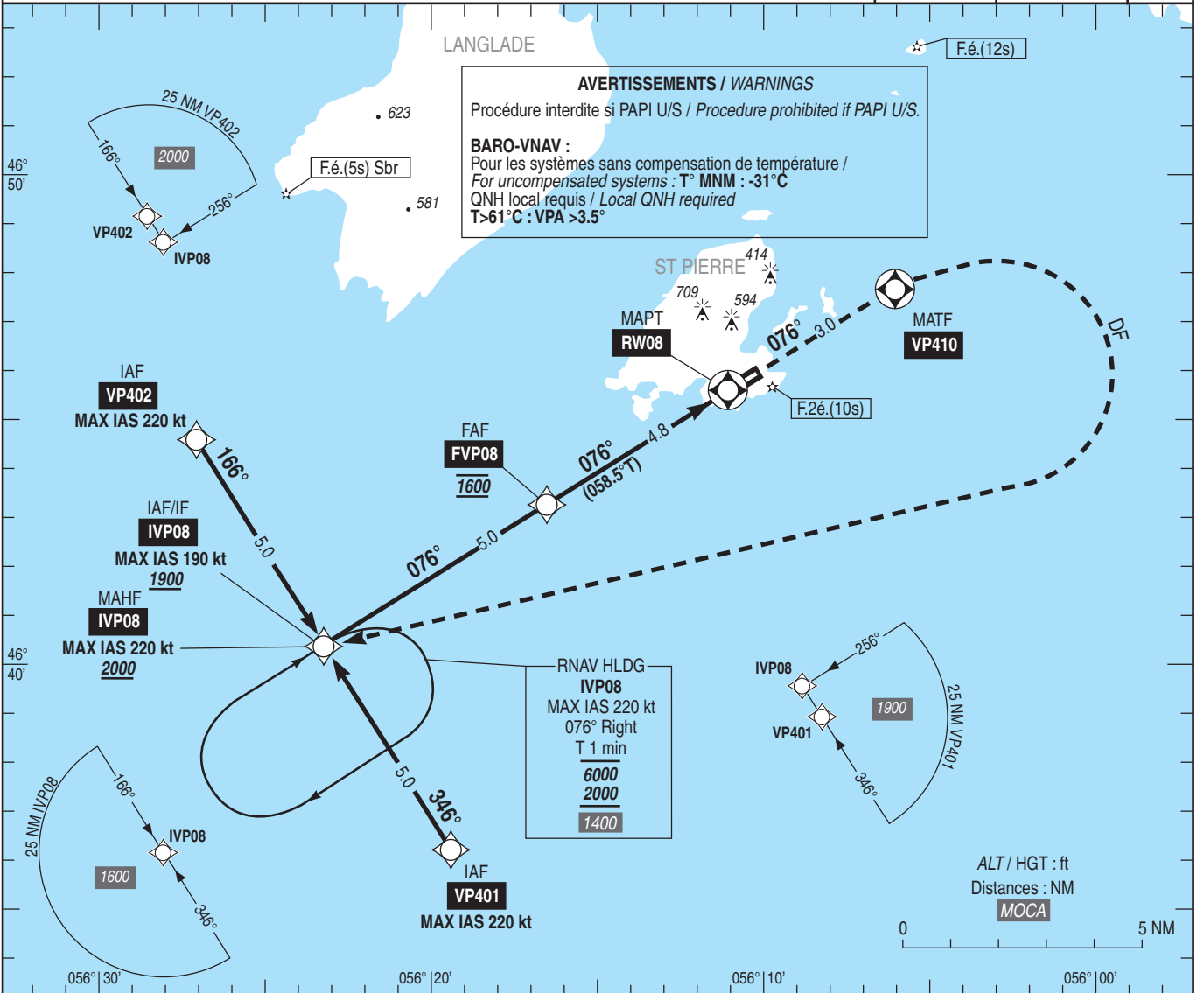
Instrument approach

CAT A B C

ALT AD : 28 , THR : 28 (1 hPa)

**RNP RWY 08**

APP : SAINT PIERRE Approche /Approach 119.100 - 118.500 TWR : SAINT PIERRE Tour /Tower 119.100 - 118.500	<b>RNP APCH</b>	WAAS CH 90850 W08A RDH/TCH : 49	VAR 18°W (20)
---	-----------------	--	---------------------



THR → (NM) 9.8 4.8 0

MNM AD : distances verticales en pieds, RVR et VIS en mètres / vertical distances in feet, RVR and VIS in meters. REF HGT : ALT THR

C A T	LPV			LNAV/VNAV			LNAV			MVL/Circling (1)		DIST THR NM 4 3 2 1 ALT 1350 1030 710 400 (HGT) (1322) (1002) (682) (372)
	DA (H)	RVR	OCH	DA (H)	VIS	OCH	MDA (H)	RVR	OCH	MDA (H)	VIS	
A	280 (250)	1300	200	460 (430)	1500	426	610 (590)	1500	581	1010 (980)	1500	
B			212	470 (440)	1500	438				1010 (980)	1600	
C			220	490 (460)	2000	457				1110 (1080)	2400	

Observations / Remarks : (1) MVL interdites au Nord de la piste / Circling not authorized North of runway.  
Panne de guidage GNSS lors de l'approche / Loss of GNSS guidance during approach : voir/see AIP ENR 1.5.

FAF - RW08	4.8 NM	70 kt 4 min 06	85 kt 3 min 23	100 kt 2 min 52	115 kt 2 min 30	130 kt 2 min 12	145 kt 1 min 59	160 kt 1 min 48
VSP (ft/min)		370	450	530	610	685	765	845