

APPROCHE AUX INSTRUMENTS

NIMES GARONS

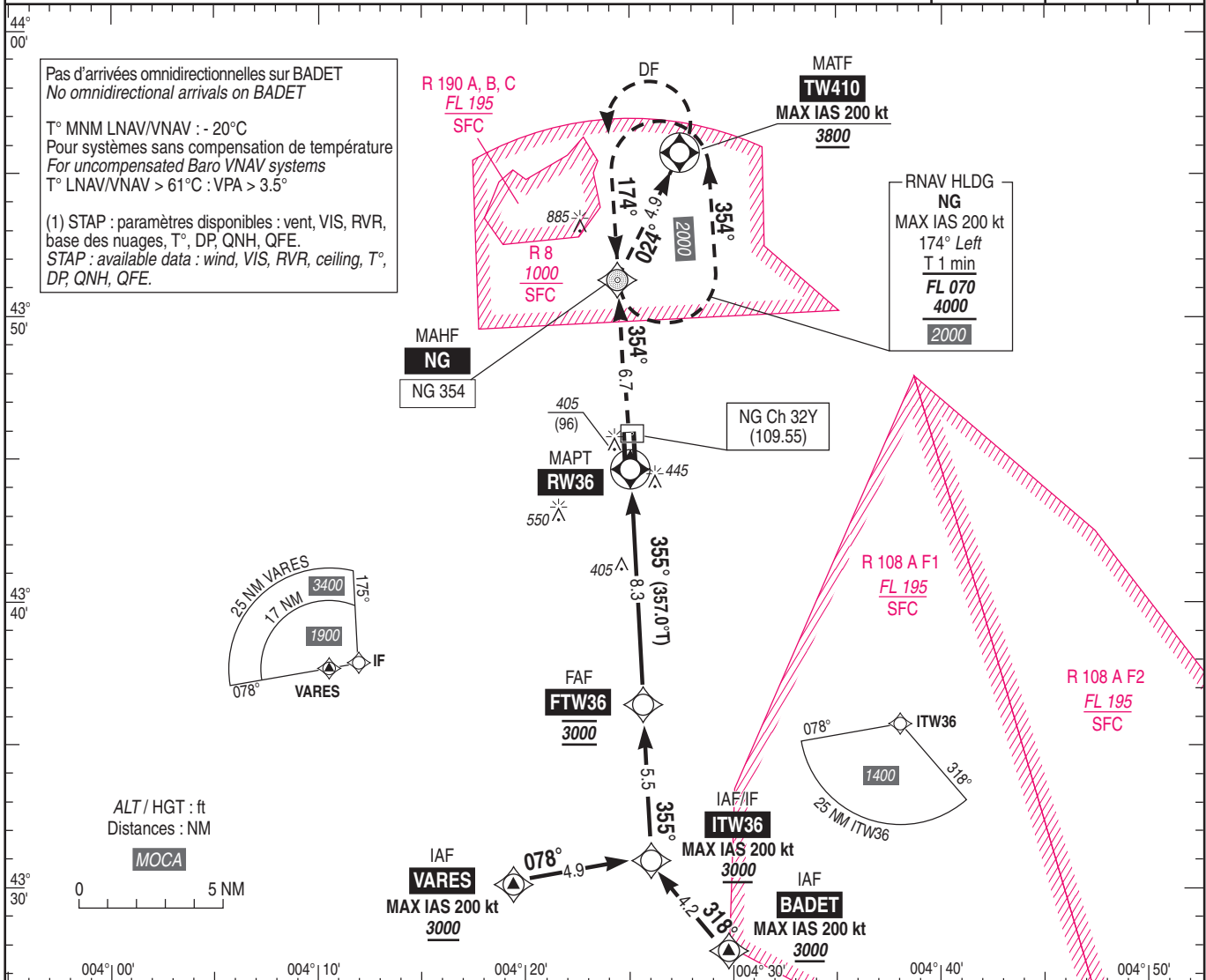
Instrument approach

CAT A B C D

ALT AD : 309, THR : 309 (11hPa)

RNP RWY 36

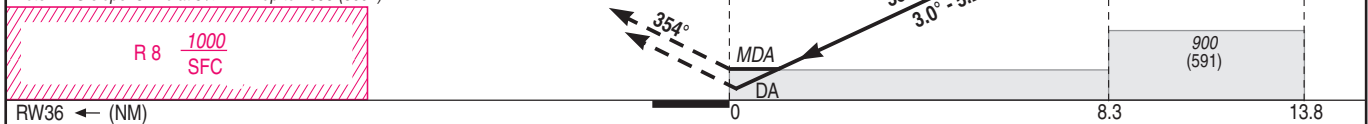
| | | | |
|---|------------------------|---|--|
| <p>ATIS GARONS 129.355 APP : MONTPELLIER Approche / Approach : voir/see AD 2 LFMT COM 01 RHONE Contrôle / Control 119.475 TWR : GARONS Tour / Tower : voir/see AD 2 LFTW COM 01. Absence ATS : A/A. Obtenir QNH local sur STAP / Obtain local QNH on STAP (1).</p> | <p>RNP APCH</p> | <p>EGNOS Ch 72358 E36A RDH : 49</p> | <p>VAR 2°E (20)</p> |
|---|------------------------|---|--|



TA : 5000

API : Monter vers NG (RM 354°) puis à droite vers TW410 en montée vers 4000. A TW410 (3800 MNM) tourner à gauche (MAX IAS 200 kt) direct vers NG pour intégrer l'attente RNAV à 4000 (3691).
 Note : Pente ATS. Monter à 5% MNM jusqu'à 4000 (3691).

Missed APCH : Climb to NG (MAG 354°) then right to TW410 climbing up to 4000. At TW410 (3800 MNM) turn left (MAX IAS 200 kt) direct to NG to join RNAV holding at 4000 (3691).
 Note : ATS slope. Climb at 5% MNM up to 4000 (3691).



MNM AD : distances verticales en pieds, RVR et VIS en mètres / vertical distance in feet, RVR and VIS in metres. REF HGT : ALT THR

| CAT | LPV | | | LNAV/VNAV | | | LNAV | | | MVL / Circling (2) | | DIST RW36 |
|-----|-----------|------|-----|-----------|-----|------|------------|------|---|--------------------|-----|-----------|
| | DA (H) | RVR | OCH | DA (H) | RVR | OCH | MDA (H) | RVR | OCH | MDA (H) | VIS | |
| A | 560 (250) | 1300 | 170 | 560 (250) | 226 | 1500 | 740 (440) | 1500 | NM 8 7 6 5 4 3 2 1 | | | |
| B | | | 182 | 560 (250) | 239 | 1500 | 790 (450) | 1600 | ALT 2910 2590 2270 1950 1630 1310 1000 680 | | | |
| C | | | 190 | 560 (250) | 247 | 1600 | 950 (640) | 2400 | (HGT) (2601) (2281) (1961) (1641) (1321) (1001) (691) (371) | | | |
| D | | | 200 | 570 (260) | 257 | 1600 | 1010 (700) | 3600 | | | | |

Observations / Remarks : (2) MVL interdites à l'Est de la piste / Circling prohibited East of RWY.

Panne de guidage GNSS lors de l'approche / Loss of GNSS guidance during approach : voir/see AIP ENR 1.5.

| | | | | | | | | |
|--------------|--------|----------|----------|----------|----------|----------|----------|----------|
| FAF - THR | 8.3 NM | 70 kt | 85 kt | 100 kt | 115 kt | 130 kt | 160 kt | 185 kt |
| VSP (ft/min) | | 7 min 07 | 5 min 52 | 5 min 00 | 4 min 20 | 3 min 50 | 3 min 07 | 2 min 42 |
| | | 370 | 450 | 530 | 605 | 685 | 845 | 975 |