

APPROCHE AUX INSTRUMENTS

NIMES GARONS

Instrument approach

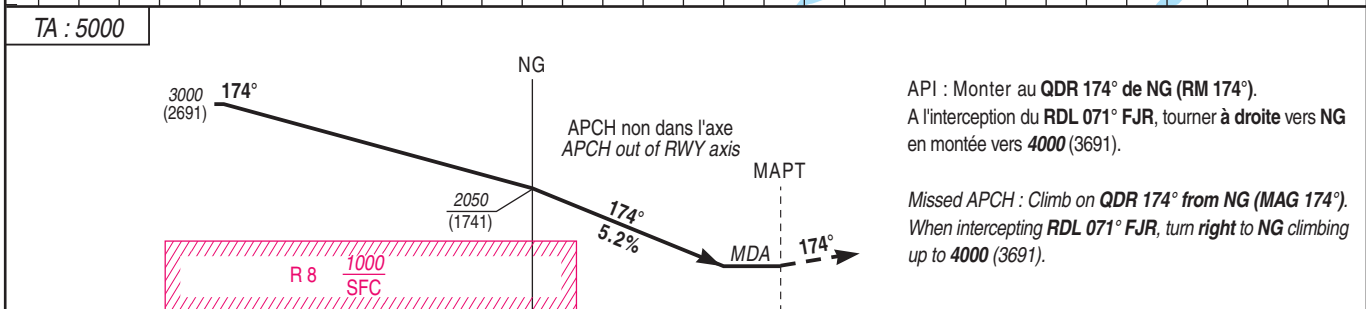
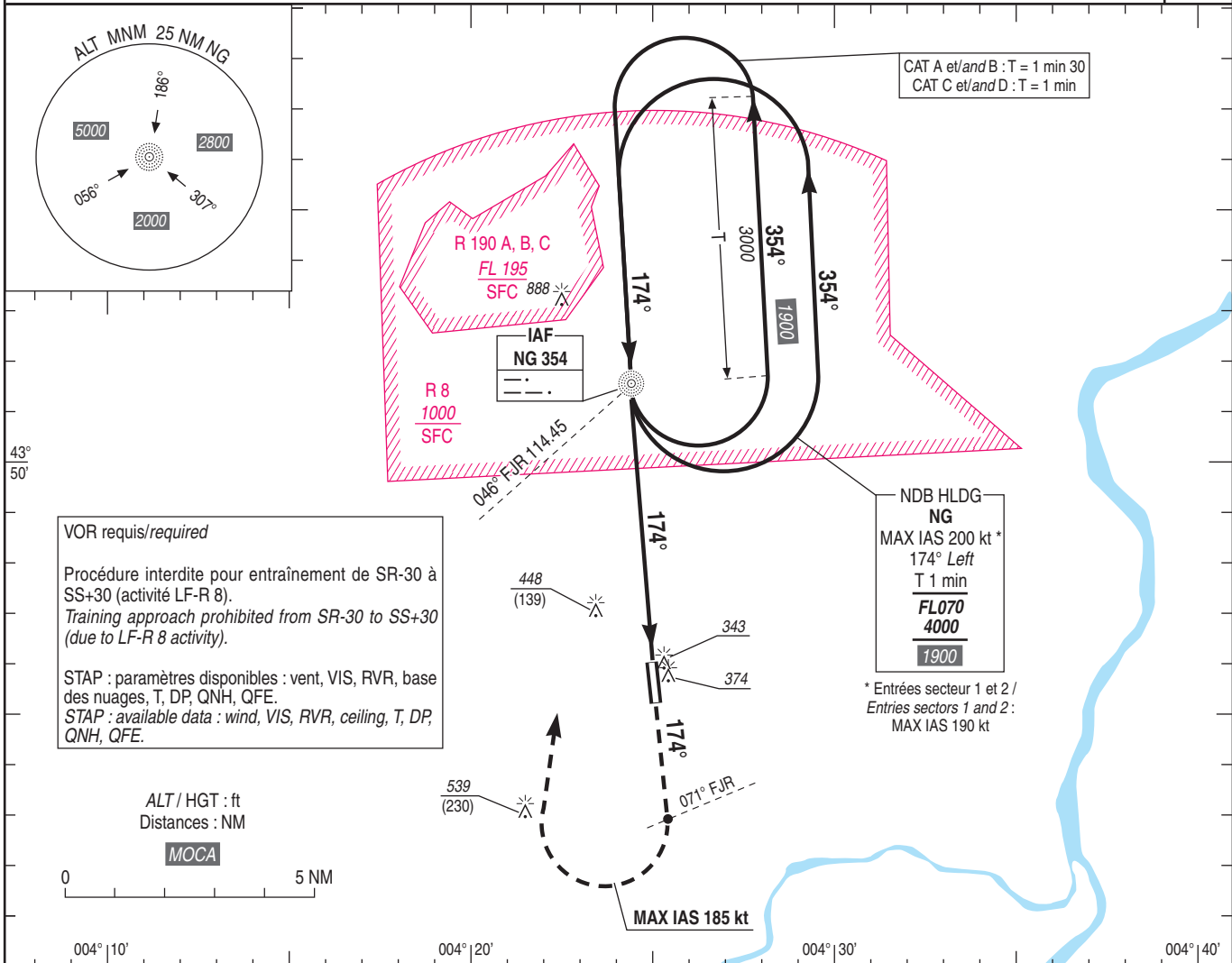
CAT A B C D

NDB RWY 18

ALT AD : 309 (11hPa), THR : 301

ATIS GARONS 129.355
 APP : MONTPELLIER Approche / Approach : voir/see AD 2 LFMT COM 01
 RHONE Contrôle / Control 119.475
 TWR : GARONS Tour / Tower : voir/see AD 2 LFTW COM 01.
 Absence ATS : A/A. Obtenir QNH local sur STAP / Obtain local QNH on STAP.

VAR
2°E
(20)



→ THR (NM) 5.3 0

MNM AD : distances verticales en pieds, RVR et VIS en mètres / vertical distance in feet, RVR and VIS in metres. REF HGT : ALT AD

CAT	NDB			MVL / Circling (1)	
	MDA (H)	RVR	OCH	MDA (H)	VIS
A	700 (390)	1100	389	750 (450)	1500
B				810 (500)	1600
C				940 (640)	2400
D				1010 (700)	3600

Observations / Remarks : (1) MVL interdites à l'Est de la piste / Circling prohibited East of RWY.

NG - MAPT (THR)	5.3 NM	70 kt 4 min 33	85 kt 3 min 44	100 kt 3 min 11	115 kt 2 min 46	130 kt 2 min 27	160 kt 1 min 59	185 kt 1 min 43
-----------------	--------	-------------------	-------------------	--------------------	--------------------	--------------------	--------------------	--------------------