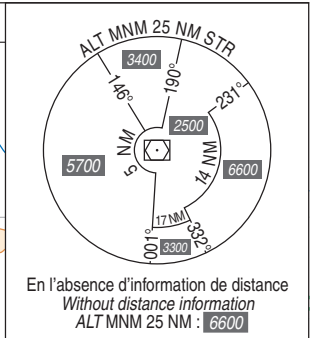
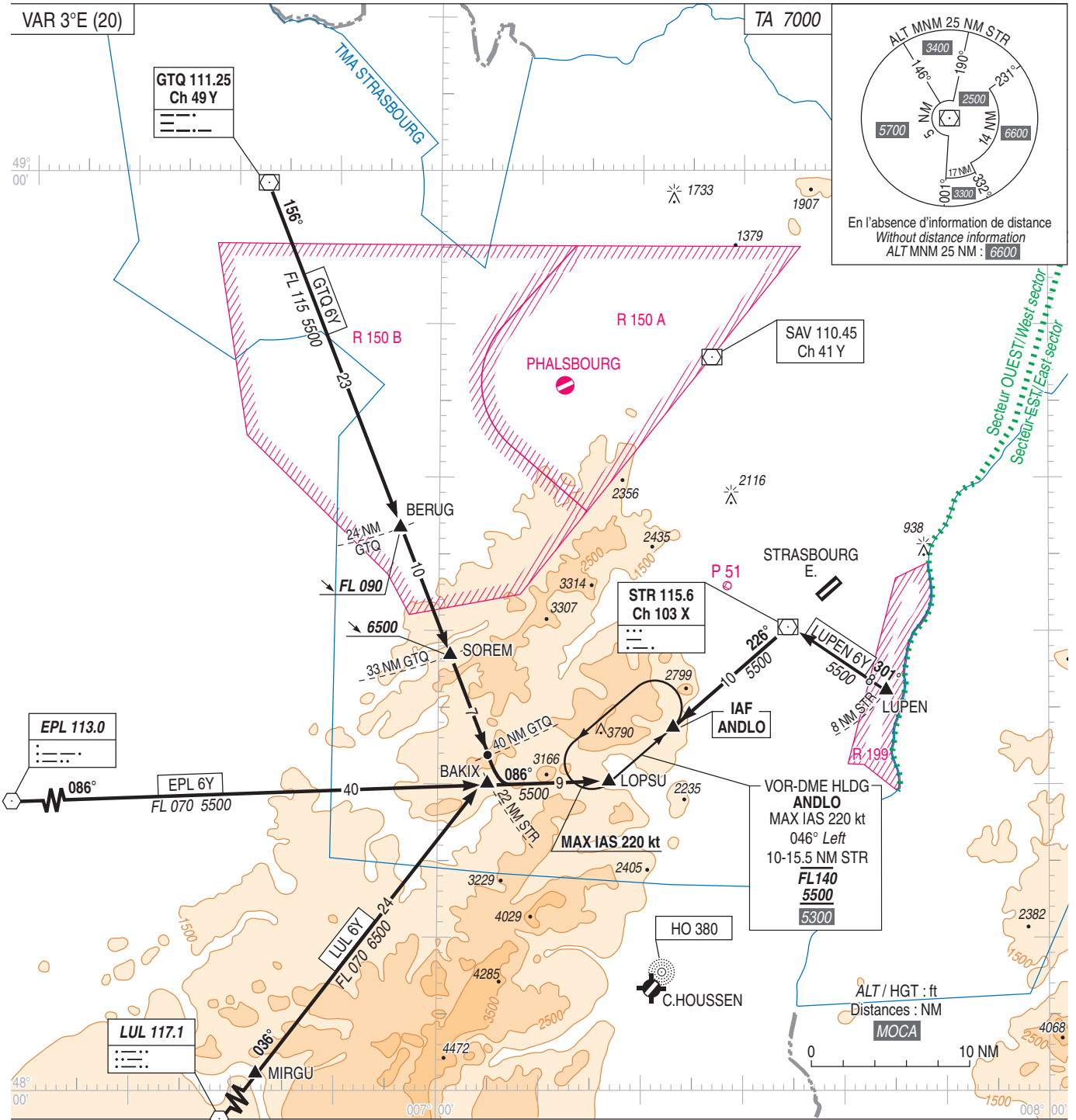


**STRASBOURG ENTZHEIM
STAR CONV RWY 05**
(Protégées pour/Protected for CAT A, B, C, D)

FREQ : Voir/See AD 2 LFST COM 01



Observations :

ARRIVEES : En dessous du FL 100 : MAX IAS 250 kt.

Remarks :

ARRIVALS : Below FL 100 : MAX IAS 250 kt.