

APPROCHE AUX INSTRUMENTS

NANCY ESSEY

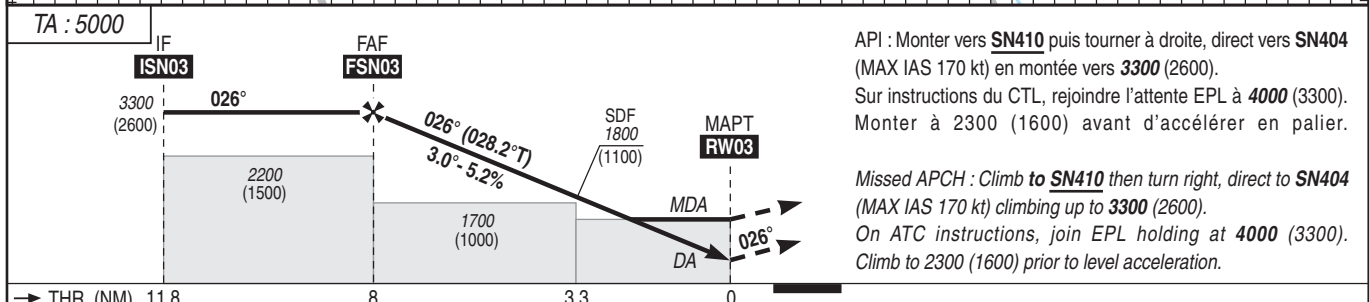
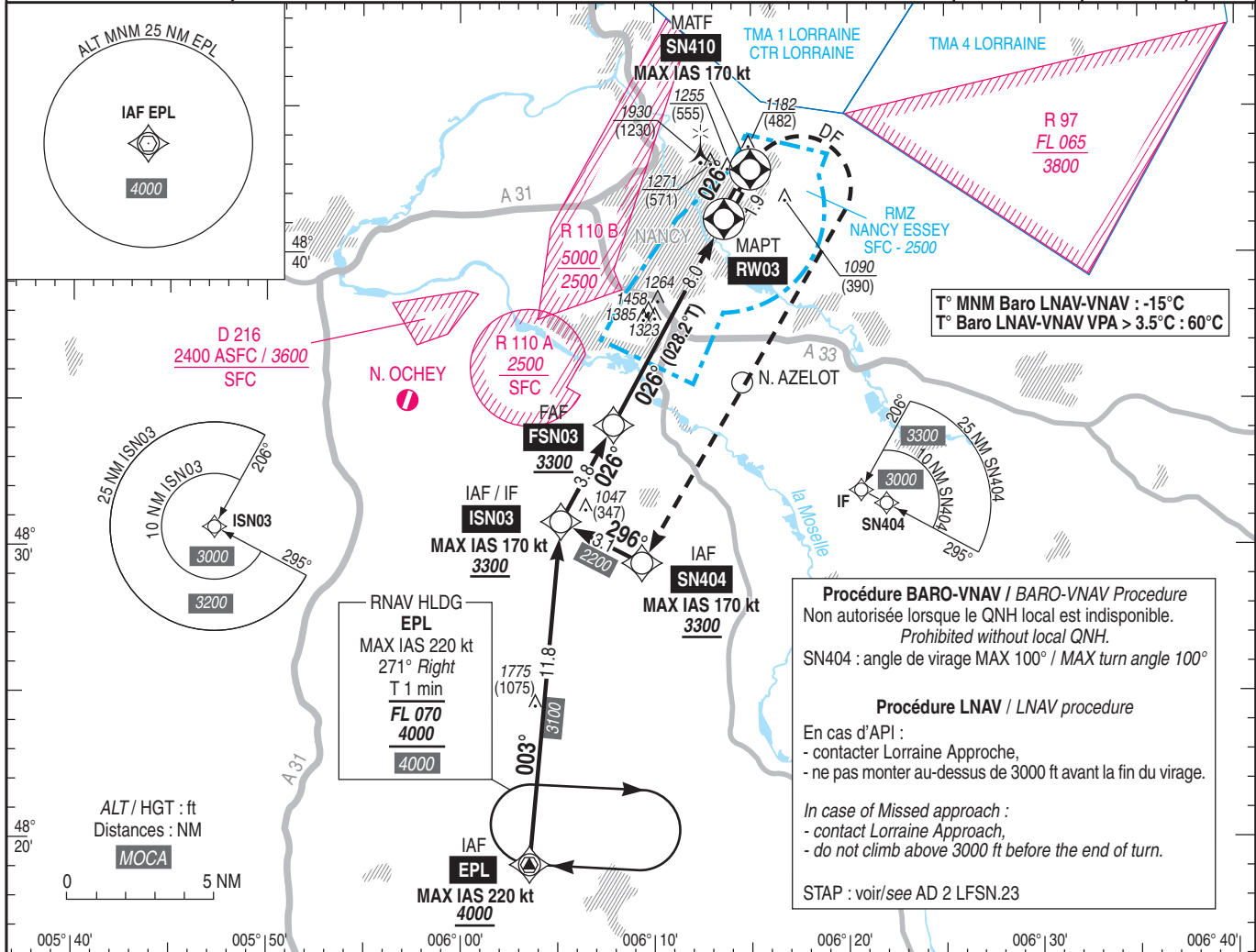
Instrument approach

CAT A B C

ALT AD : 757, THR : 700 (26 hPa)

RNP RWY 03

| | | | |
|--|------------------------|---|------------------------------------|
| <p>APP : LORRAINE Approche/Approach - OCHEY Approche/Approach 127.250 (1) TWR : NIL (AD non contrôlé/AD not controlled) AFIS : NANCY Information 119.600 (2) (1) Absence APP : contacter/contact STRASBOURG Information 119.450 (2) Absence AFIS : A/A FR uniquement. Obtenir QNH local sur STAP, ou auprès ATIS LORRAINE 136.580 A/A FR only. Obtain local QNH on STAP, or from LORRAINE ATIS 136.580</p> | <p>RNP APCH</p> | <p>EGNOS Ch 84922 E03A RDH : 49</p> | <p>VAR 2°E (20)</p> |
|--|------------------------|---|------------------------------------|



MNM AD : distances verticales en pieds, RVR et VIS en mètres / vertical distances in feet, RVR and VIS in metres. REF HGT : ALT THR

| CAT | LPV | | | LNAV-VNAV | | | LNAV | | | MVL/Circling (1) | | MVL/Circling (1) sans QNH local without local QNH | | DIST RWY03 | | | |
|-----|------------|------|-----|------------|------|-----|------------|------|-----|------------------|------|---|------|------------|-------------|---|-------------|
| | DA (H) | RVR | OCH | DA (H) | RVR | OCH | MDA (H) | RVR | OCH | MDA (H) | VIS | MDA (H) | VIS | NM | ALT (HGT) | 7 | 6 |
| A | 1200 (500) | 1500 | 495 | 1250 (550) | 1500 | 542 | | 1500 | | 1560 (860) | 1500 | 1620 (920) | 1500 | 5 | 2980 (2270) | 4 | 2660 (1960) |
| B | 1210 (510) | 1500 | 508 | 1260 (560) | 1500 | 554 | 1470 (770) | 1500 | 768 | 1560 (860) | 1600 | 1620 (920) | 1600 | 5 | 2340 (1640) | 4 | 1700 (1000) |
| C | 1220 (520) | 1900 | 516 | 1280 (580) | 2200 | 574 | | 2400 | | 1860 (1160) | 2400 | 1920 (1220) | 2400 | | | | |

Observations / Remarks : Circuit AD RWY 03 : Droite / AD Circuit RWY 03 : Right hand.
 Panne de guidage durant l'approche / Loss of GNSS guidance during approach : voir/see AIP ENR 1.5.
 Absence ATIS : procédure obligatoirement suivie de MVL / circling mandatory after procedure.
 (1) MVL interdites à l'Ouest de la piste / Circling prohibited West of RWY.

| | | | | | | | | |
|--------------|------|-------------------|-------------------|--------------------|--------------------|--------------------|--------------------|--------------------|
| FAF - THR | 8 NM | 70 kt 6 min 52 | 85 kt 5 min 39 | 100 kt 4 min 48 | 115 kt 4 min 11 | 130 kt 3 min 42 | 145 kt 3 min 19 | 160 kt 3 min 00 |
| VSP (ft/min) | | 370 | 450 | 530 | 610 | 690 | 770 | 850 |