

APPROCHE AUX INSTRUMENTS

NANTES ATLANTIQUE

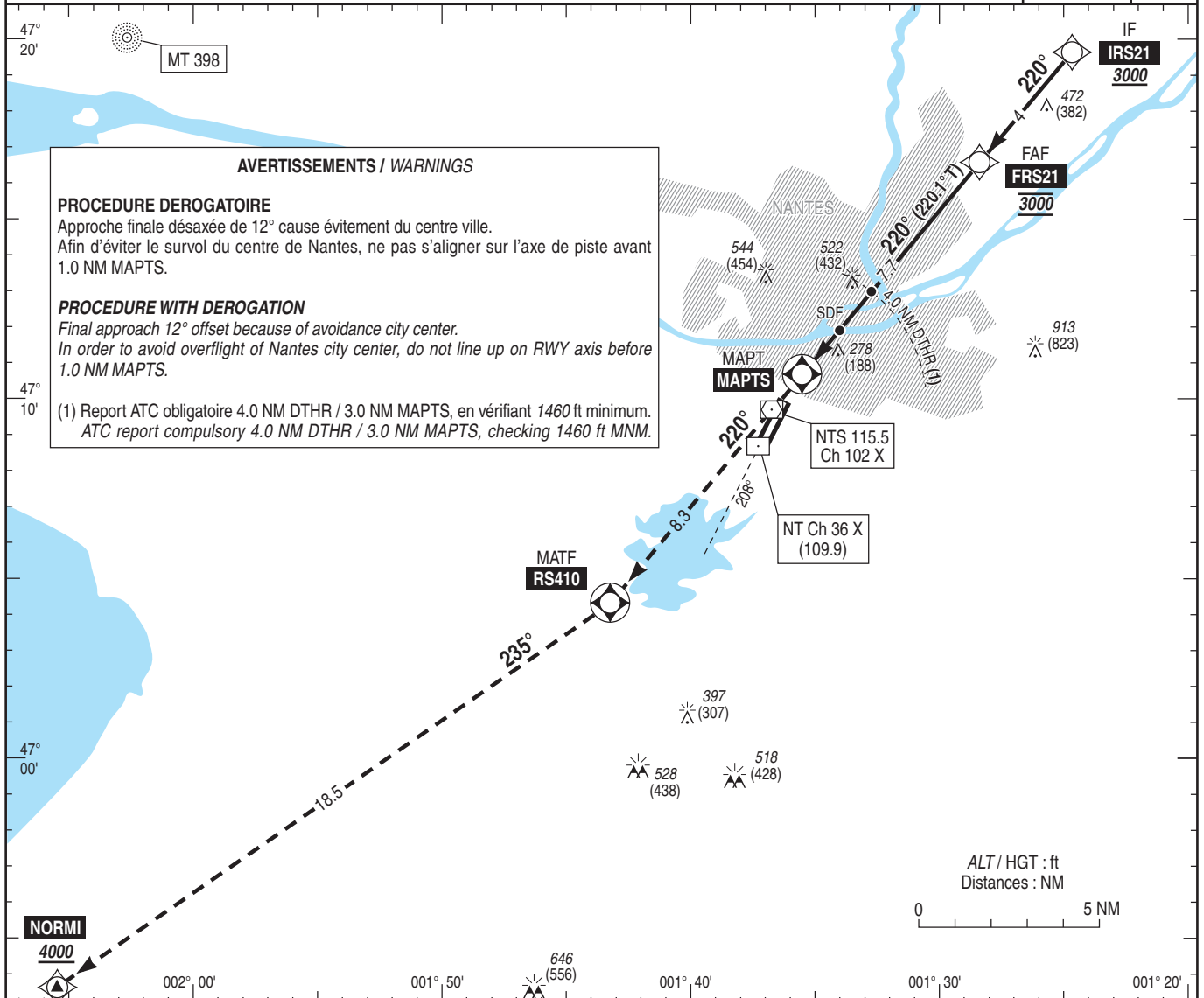
Instrument approach

CAT A B C D

ALT AD : 90 (4 hPa), DTHR : 87

FNA RNP RWY 21

FREQ : voir / see AD 2 LFRS COM 01	RNP APCH	VAR 0° (20)
------------------------------------	----------	-------------------

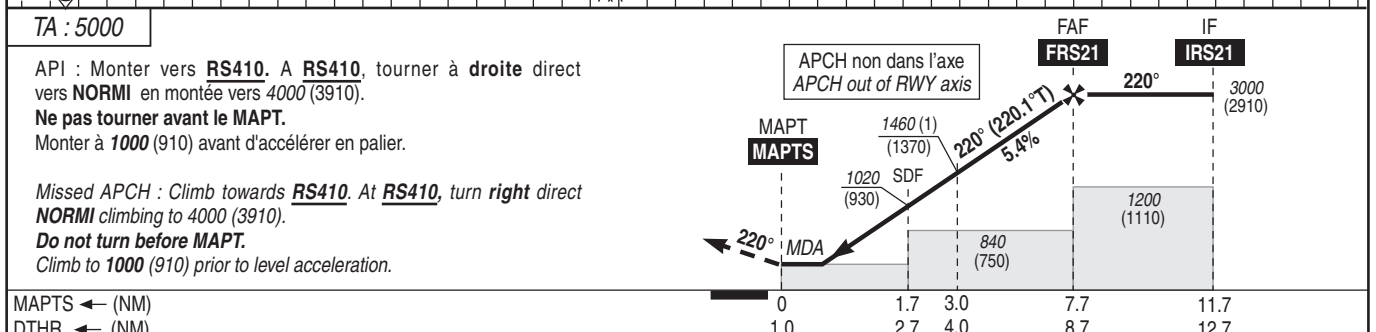


AVERTISSEMENTS / WARNINGS

PROCEDURE DEROGATOIRE
Approche finale désaxée de 12° cause évitement du centre ville.
Afin d'éviter le survol du centre de Nantes, ne pas s'aligner sur l'axe de piste avant 1.0 NM MAPTS.

PROCEDURE WITH DEROGATION
Final approach 12° offset because of avoidance city center.
In order to avoid overflight of Nantes city center, do not line up on RWY axis before 1.0 NM MAPTS.

(1) Report ATC obligatoire 4.0 NM DTHR / 3.0 NM MAPTS, en vérifiant 1460 ft minimum.
ATC report compulsory 4.0 NM DTHR / 3.0 NM MAPTS, checking 1460 ft MNM.



MNMD AD : distances verticales en pieds, RVR et VIS en mètres / vertical distances in feet, RVR and VIS in metres. REF HGT : ALT AD

CAT	LNAV			MVL / Circling		DIST MAPTS	7	6	5	4	3	2	1
	MDA (H)	RVR	OCH	MDA (H)	VIS								
A	830 (740)	3400	440	830 (740)	3400	NM	7	6	5	4	3	2	1
B	830 (740)	3400	440	830 (740)	3400	ALT	2780	2450	2120	1790	1460	1130	800
C	830 (740)	3400	440	940 (850)	3400	(HGT)	(2690)	(2360)	(2030)	(1700)	(1370)	(1043)	(713)
D	840 (750)	3500	446	940 (850)	3600								

Observations /Remarks : Panne de guidage GNSS lors de l'approche / Loss of GNSS guidance during approach : voir/see AIP ENR 1.5.

FAF - MAPTS	7.7 NM	70 kt	90 kt	110 kt	130 kt	150 kt	170 kt	190 kt
VSP (ft/min)		6 min 36	5 min 08	4 min 12	3 min 33	3 min 05	2 min 43	2 min 26
		390	500	610	720	830	940	1050