

APPROCHE AUX INSTRUMENTS

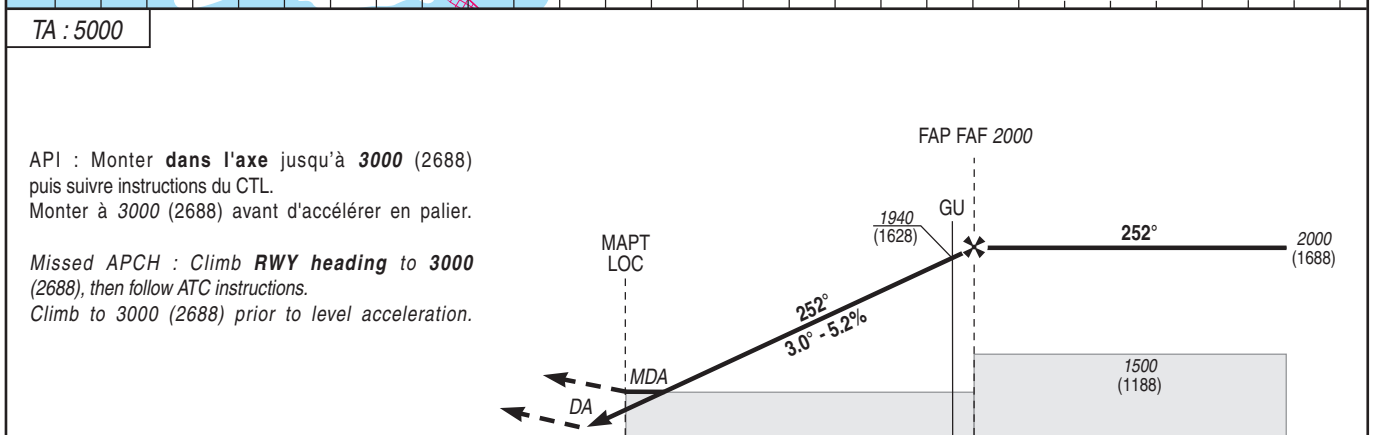
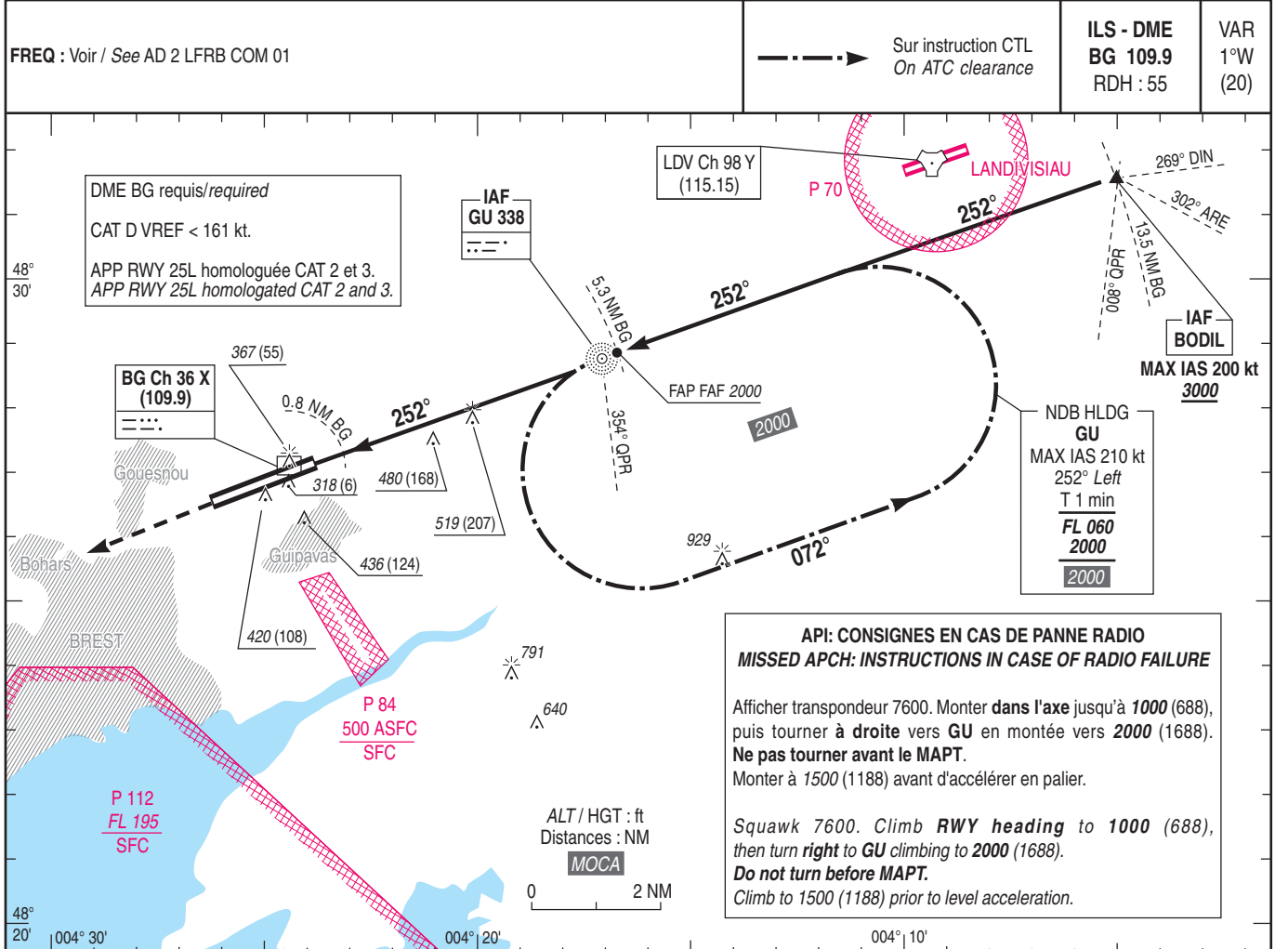
Instrument approach

CAT A B C D

ALT AD : 325, DTHR : 312 (12 hPa)

BREST BRETAGNE

FNA ILS Y CAT I RWY 25L ou/or
FNA ILS Y CAT II et/and III RWY 25L ou/or
FNA LOC Y RWY 25L



DTHR	← (NM)	0	0.6	4.9	5.1
DME ATT BG	← (NM)	0.2	0.8	5.1	5.3

MNM AD : distances verticales en pieds, RVR et VIS en mètres / vertical distances in feet, RVR and VIS in metres. REF HGT : ALT DTHR

CAT	ILS Y		LOC Y			MVL / Circling ⁽²⁾		DME BG					
	DA (H)	RVR	OCH CAT 1	OCH CAT 2	MDA (H)	RVR	OCH	MDA (H)	VIS	NM	2	3	4
A			148	53				880 (570)	1500				
B			160	64				890 (580)	1600	940 (628)	1260 (948)	1580 (1268)	
C	520 (200)	550	177	84	780 (470)	1500	463	1070 (760)	2400				
D			191	100				1190 (880)	3600				

Observations/Remarks : (2) MVL interdites au Sud de la piste. Circuit RWY 25L : droite / Circling prohibited South of RWY. Right hand circuit RWY 25L.

		70 kt	80 kt	90 kt	100 kt	110 kt	130 kt	150 kt	170 kt	190 kt
FAF 2000 - DTHR	5.1 NM	4 min 22	3 min 50	3 min 24	3 min 04	2 min 47	2 min 21	2 min 02	1 min 48	1 min 37
FAF 2000 - MAPT	4.5 NM	3 min 51	3 min 23	3 min 00	2 min 42	2 min 27	2 min 05	1 min 48	1 min 35	1 min 25
VSP (ft/min)		370	420	480	530	580	690	800	900	1010