

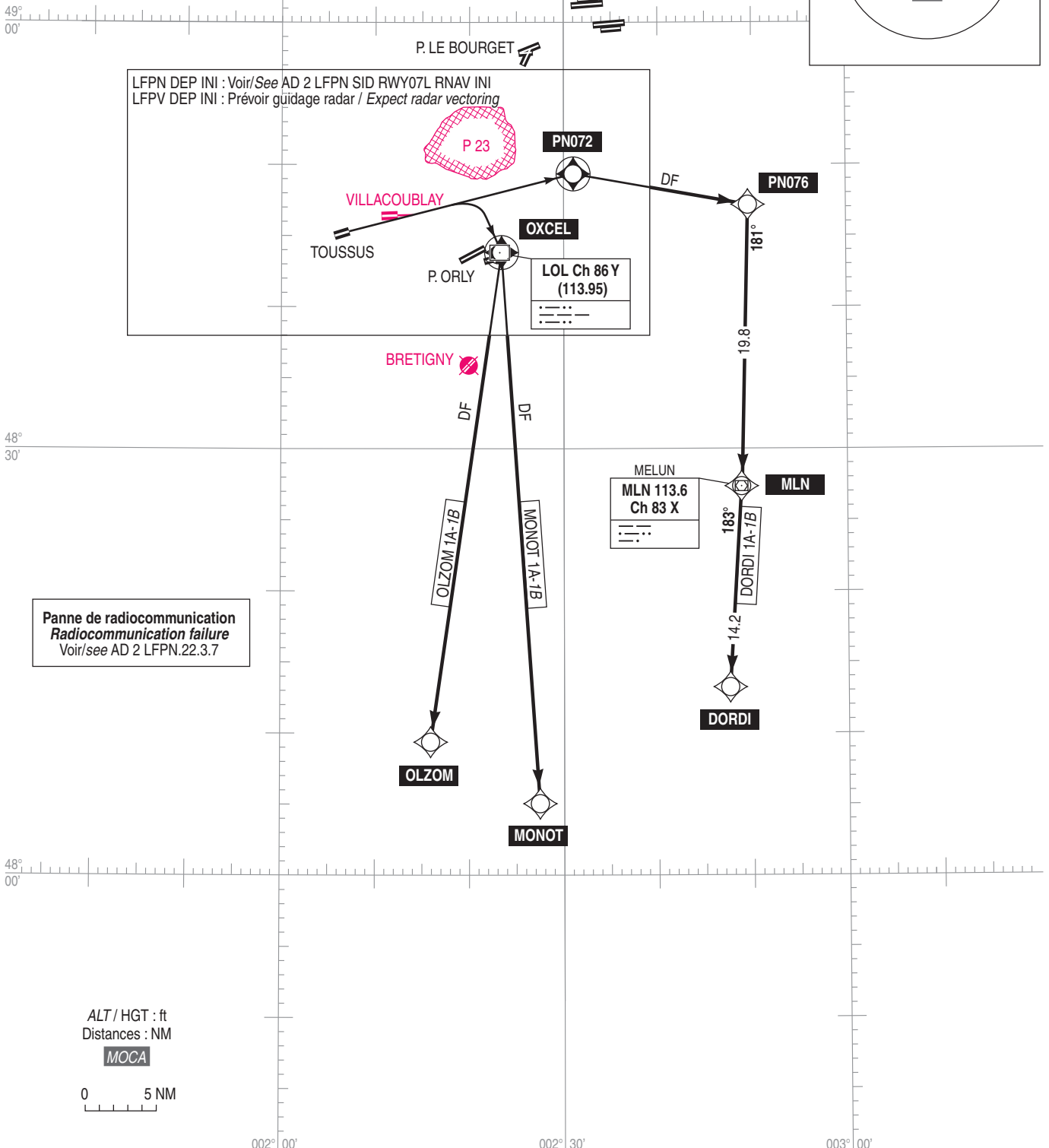
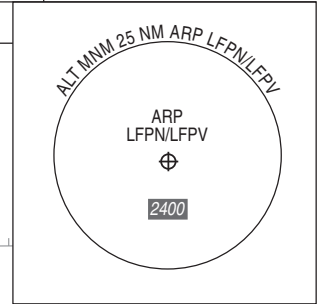
**TOUSSUS LE NOBLE (LFPN) - VILLACOUBLAY VELIZY (LFPV)**  
**SID RNAV Réacteurs/Jets (FL < 195) et/and Hélices/Propellers (FL < 195)**  
**LFPN RWY 07L (1A - 1B) - LFPV RWY 09 (1A - 1B)**  
**OLZOM - MONOT - DORDI**  
 (Protégés pour/Protected for CAT A, B, C, D)

FREQ : Voir/See AD 2 LFPN COM 01

**RNAV 1**  
 LFPN : GNSS requis/required  
 LFPV : GNSS ou/or DME/DME

VAR 1°E (20)

TA 5000



**Panne de radiocommunication**  
**Radiocommunication failure**  
 Voir/see AD 2 LFPN.22.3.7