

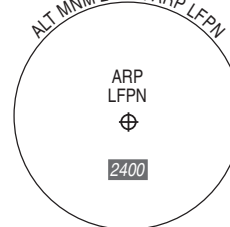
**TOUSSUS LE NOBLE**  
Départs initiaux RNAV / RNAV Initial departures  
RWY 07L (1A - 1B)  
(Protégés pour / Protected for CAT A, B, C)

FREQ : Voir/See AD 2 LFPN COM 01

**RNAV 1**  
GNSS requis/required

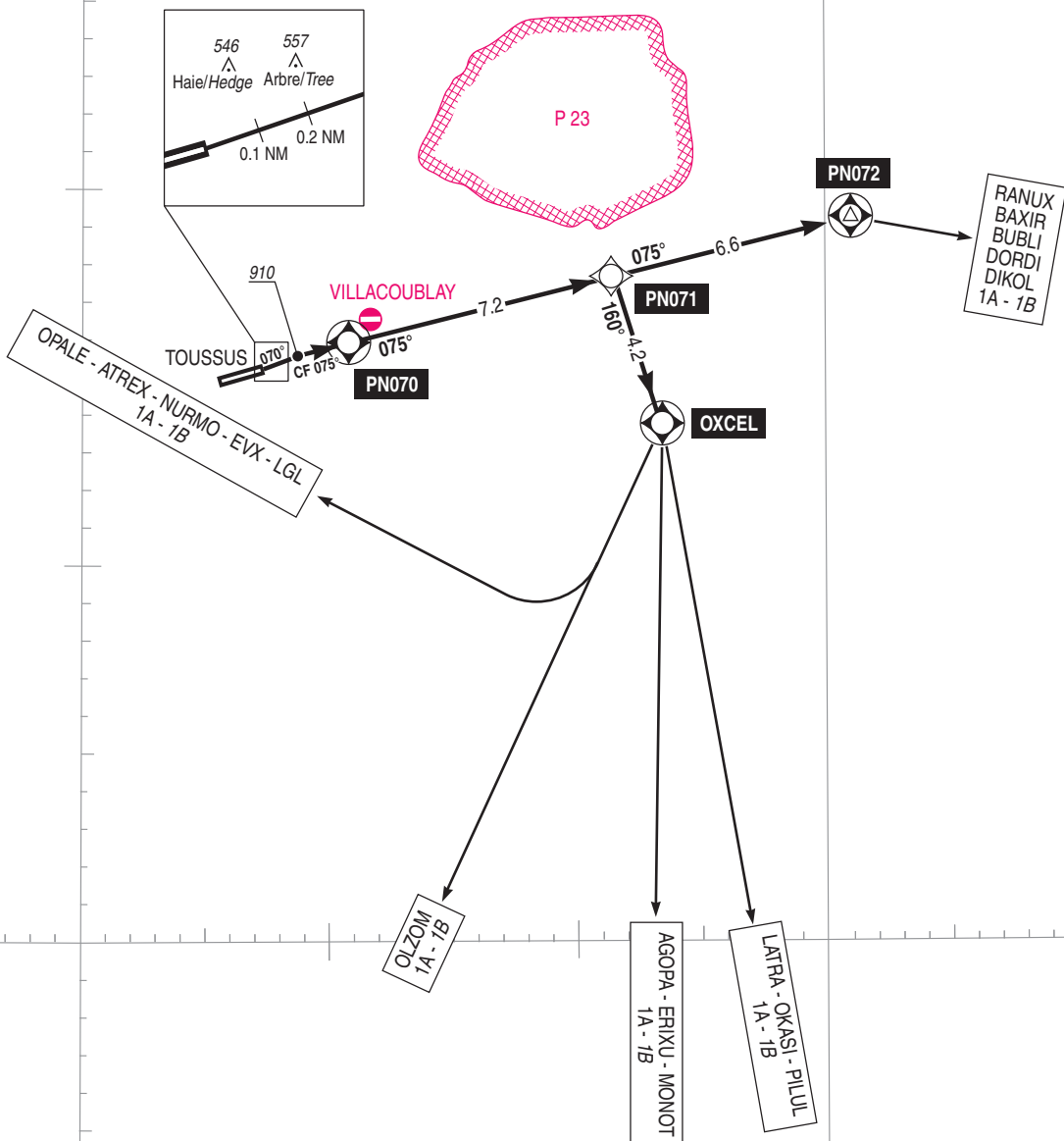
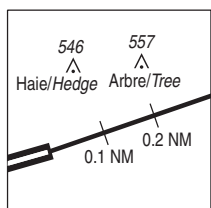
VAR 1°E (20)

TA 5000

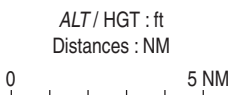


49° 00'

**Pente de montée / Climb gradient**  
L'obstacle HAIE (546 ft) impose une pente de montée de 7.8% jusqu'à 910.  
Si négligé, la pente obstacle est réduite à 5.2% jusqu'à 910.  
HEDGE (546 ft) obstruction requires a climb gradient of 7.8% up to 910.  
If ignored, climb gradient is reduced to 5.2% up to 910.



48° 30'



002° 00'

002° 30'