

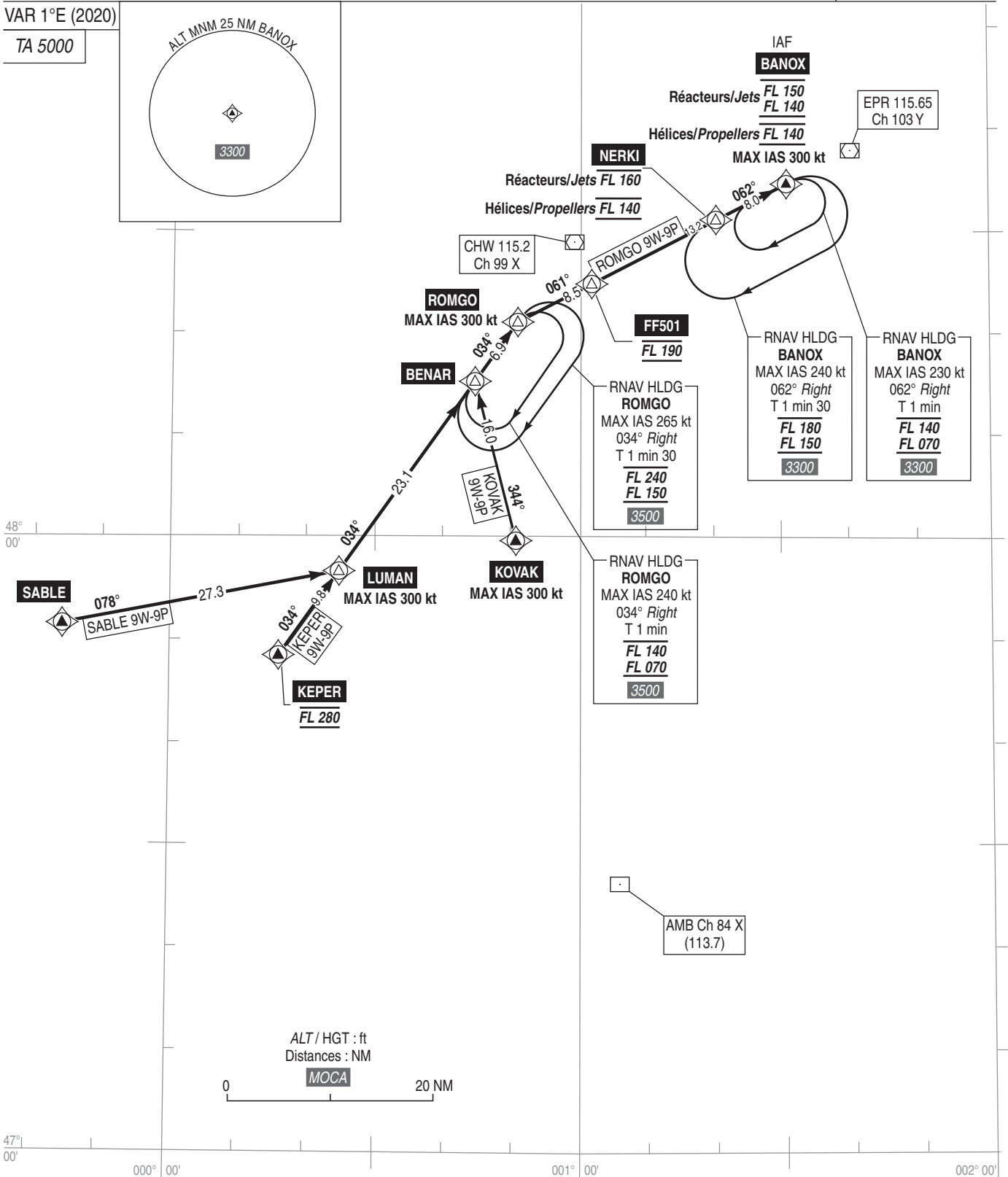
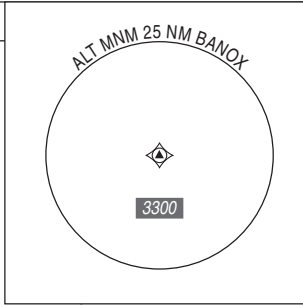
**PARIS CHARLES DE GAULLE**  
**STAR RNAV (GNSS - DME/DME) Réacteurs et Hélices / Jets and Propellers**  
**RWY 26L - 26R - 27L - 27R (9W - 9P)**  
**KEPER - KOVAK - SABLE - ROMGO**  
(Protégés pour / Protected for CAT A, B, C, D)

**IAF : BANOX**

ATIS DE GAULLE 128.225 (FR) - 127.125 (EN)

**RNAV 1**  
GNSS ou /or DME/DME

VAR 1°E (2020)  
TA 5000



Voir consignes STAR AD 2 LFPG.22.

**PANNE DE RADIOCOMMUNICATION**

Voir consignes particulières STAR AD 2 LFPG.22.

See instructions STAR AD 2 LFPG.22.

**RADIOCOMMUNICATION FAILURE :**

See STAR special instructions described in AD 2 LFPG.22.