

APPROCHE AUX INSTRUMENTS

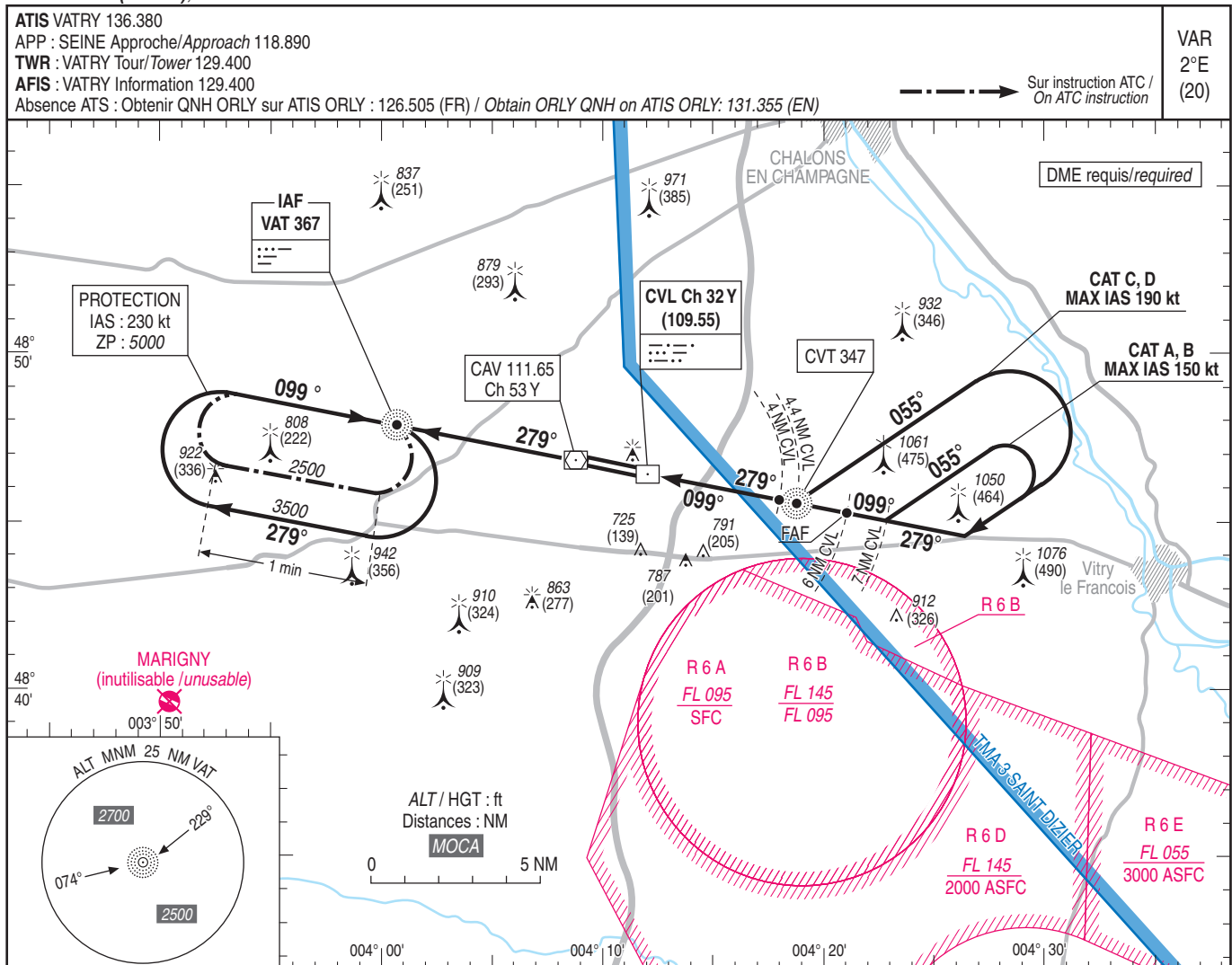
CHALONS VATRY

Instrument approach

CAT A B C D

ALT AD : 586 (21 hPa), DTHR : 586

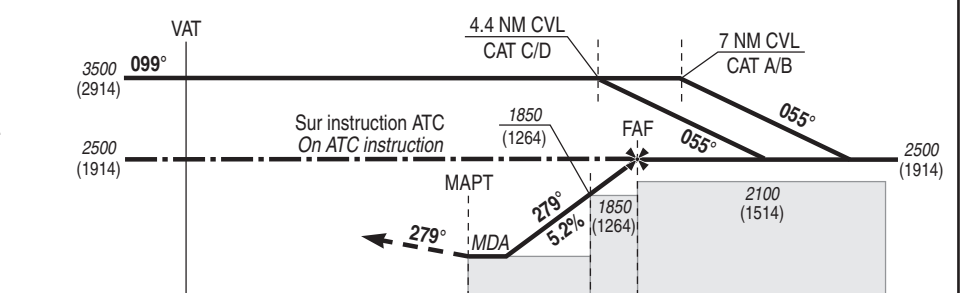
NDB RWY 28



TA : 5000
ALT / HGT de sécurité non valables pour l'approche initiale / Safety ALT / HGT not valid for initial approach

API : Monter QDR 279° VAT (RM 279°) vers 2500 (1914) pour intégrer l'hippodrome VAT à 2500 (1914).
Monter à 2000 (1414) avant d'accélérer en palier.

Missed APCH: Climb QDR 279° VAT (MAG 279°) up to 2500 (1914) to join the race track VAT at 2500 (1914).
Climb to 2000 (1414) prior to level acceleration.



DTHR ← (NM) 7.8
DME CVL ← (NM) 1.2 3.8 5.9

MNM AD : distances verticales en pieds, RVR et VIS en mètres / vertical distances in feet, RVR and VIS in metres. REF HGT : ALT AD

CAT	NDB + DME CVL			MVL / Circling (1)		MVL/Circling (1) absence ATS, HJ seulement/only		DME CVL				
	MDA (H)	RVR	OCH	MDA (H)	VIS	MDA (H)	VIS	NM	2	3	4	5
A				1120 (540)	1500	1460 (880)	1500	ALT	1210	1530	1850	2160
B	1040 (450)	1400	450	1140 (550)	1600	1480 (890)	1600	(HGT)	(623)	(943)	(1263)	(1573)
C				1260 (680)	2400	1600 (1020)	2400					
D				1290 (710)	3600	1630 (1050)	3600					

Observations / Remarks : (1) MVL CAT C et D interdites au sud de la piste si R 6 A active.
(1) Circling CAT C and D prohibited South of RWY if R 6 A active.

		70 kt	85 kt	100 kt	115 kt	130 kt	160 kt	185 kt
FAF - MAPT	4.9 NM	4 min 12	3 min 28	2 min 56	2 min 33	2 min 16	1 min 50	1 min 35
FAF - DTHR	5.9 NM	5 min 03	4 min 10	3 min 32	3 min 05	2 min 43	2 min 13	1 min 55
VSP (ft/min)		Non disponible / Not available						