

APPROCHE AUX INSTRUMENTS

CHALONS VATRY

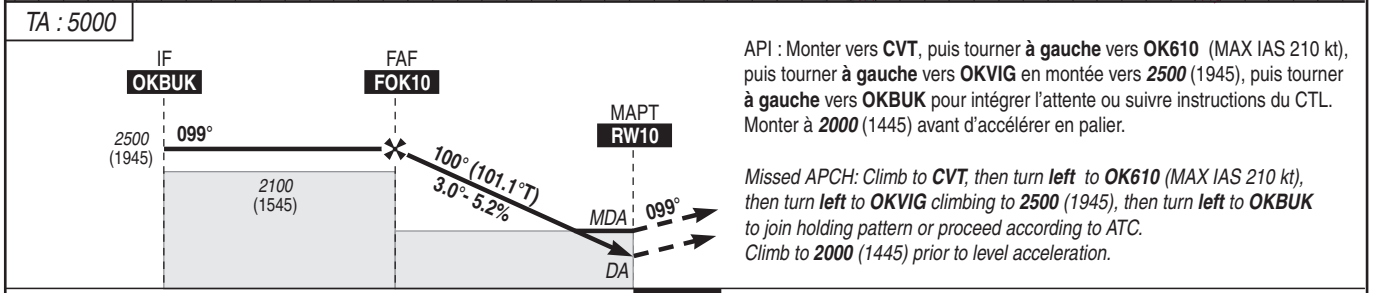
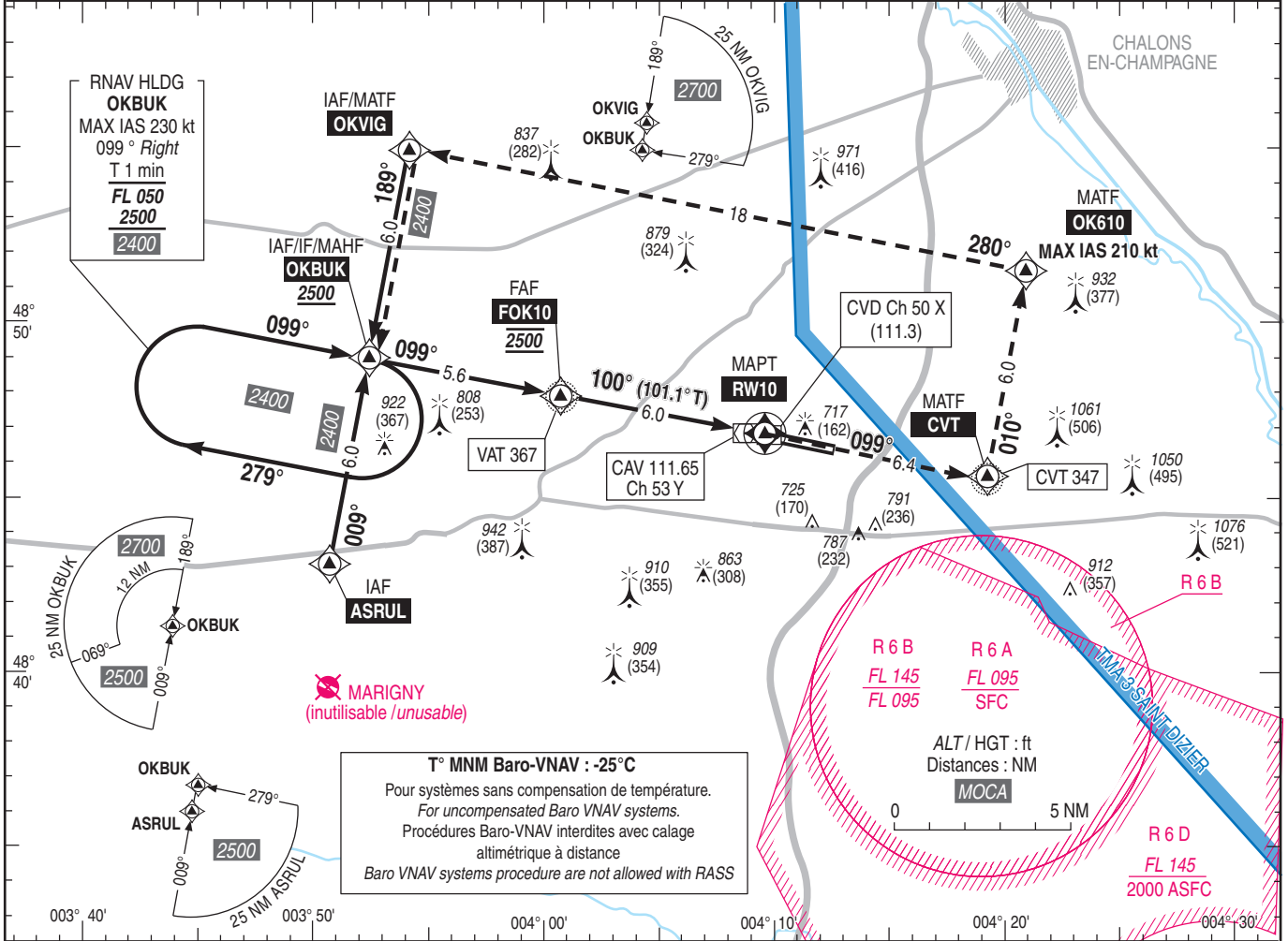
Instrument approach

CAT A B C D

ALT AD : 586, DTHR : 555 (20 hPa)

RNP RWY 10

ATIS VATRY 136.380 APP : SEINE Approche/Approach 118.890 TWB : VATRY Tour/Tower 129.400 AFIS : VATRY Information 129.400 Absence ATS : Obtenir QNH ORLY sur ATIS ORLY : 126.505 (FR) / Obtain ORLY QNH on ATIS ORLY: 131.355 (EN)	RNP APCH	EGNOS Ch 61872 E10A RDH : 49	VAR 2°E (20)
---	----------	---------------------------------------	--------------------



MNM AD : distances verticales en pieds, RVR et VIS en mètres. / Vertical distances in feet, RVR and VIS in metres. REF HGT : ALT DTHR

CAT	LPV			LNAV / VNAV			LNAV			MVL/Circling (1)		MVL/Circling (1) absence ATS, HJ seulement/only		DIST RW10						
	DA (H)	RVR	OCH	DA (H)	RVR	OCH	MDA (H)	RVR	OCH	MDA (H)	VIS	MDA (H)	VIS	NM	ALT (HGT)	5	4	3	2	1
A			206			192				1120 (570)	1500	1460 (910)	1500			2200 (1645)	1880 (1325)	1560 (1005)	1240 (685)	920 (365)
B	810 (250)	750	218	810 (250)	750	204	880 (320)	750	320	1140 (580)	1600	1480 (920)	1600							
C			227			212				1260 (710)	2400	1600 (1050)	2400							
D			237			224				1290 (740)	3600	1630 (1080)	3600							
DL			237			-				-	-	-	-							

Observations / Remarks : Panne de guidage GNSS lors de l'approche / loss of GNSS guidance during APCH : voir/see AIP ENR 1.5
(1) MVL CAT C et D interdites au sud de la piste en cas d'activation de la R 6 A / Circling CAT C and D prohibited South of RWY when R 6 A is active.

FAF - RW10	6.0 NM	70 kt	5 min 06	85 kt	4 min 12	100 kt	3 min 34	115 kt	3 min 06	130 kt	2 min 45	160 kt	2 min 14	185 kt	1 min 56
VSP (ft/min)		370		450		530		610		690		850		980	